

**DISCOVER OUR LINE OF
CONCRETE BOXES...**

In this month's newsletter we are giving you a more in depth overview of our full line of Concrete Boxes. "Concrete Boxes" is a generic description. Our line of boxes cover a large spectrum of applications.

These Applications Include:

- Pull Boxes
- Bilge Pump Enclosures
- Splice Boxes
- Vaults
 - Electrical Vaults
 - Utility Vaults
 - Gas Regulator Vaults
 - Fiber Optic Vaults
 - Communication Vaults
 - Water Meter Vaults
- Submersible Equipment Enclosures
- Junction Boxes
- Manhole Boxes

The applications listed are terms used through out our industry. When your customers need a specific size, Concast can make a precast concrete box to their specifications, providing it falls within our mold capabilities.

PULL BOXES

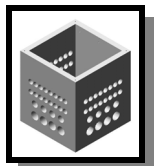
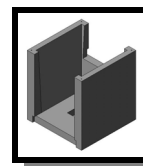
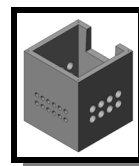
Concast began making the pull box to go hand in hand with our Fibercrete Trench System, but have found that there are many other applications that this smaller concrete enclosure can be used for. The dimensions of this box measure, 38" x 38" x 42" high.

We could also split the box to meet design requirements. A 76" x 38" x 42" high box could be made and anything in between. Call for any specific needs.



Any openings, knockouts, or conduit couplers can be precast into any of our boxes.

This unit can be cast with a solid or open bottom and can be ordered with a Fibercrete or Steel Galvanized Cover.



Inside this Newsletter:

CONCRETE BOXES:
Concast can provide a box for almost any situation!

PULL BOXES:
Ideal for pulling cables and many other applications...

**LARGE PULL BOX/
VAULT:**
12' x 6' Pull Box that is stackable...

**SUBMERSIBLE
SWITCHGEAR VAULT:**
Designed for the S&C Switchgear this vault also has other uses...

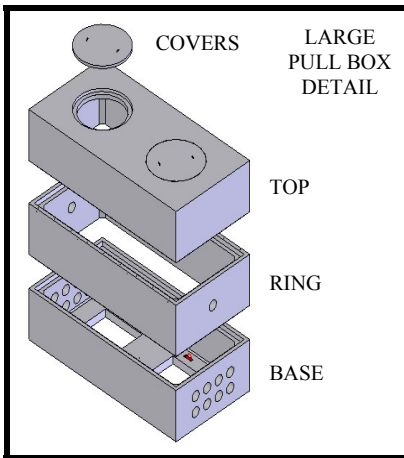
LARGE PULL BOX / VAULT



OUR NEW PRODUCT FROM LAST MONTHS NEWSLETTER (PB-72-144-36). HERE ARE A FEW PICTURES SHOWING THEM IN OUR YARD.



Concast has recently designed a large scale pull box. This box has 6" thick walls and can be ordered as a ring or with a base. The



base unit comes with a floor, than can be configured with multiple openings to your specifications. Rings can be stacked on a base to reach greater heights. This box was highlighted under "NEW PRODUCT" in our March 2003 Newsletter, and has now been in production for a few weeks with great results. Like the smaller pull box this box can be precast with any openings, knockouts, and conduit couplers needed. There are many options when it comes to covers for this unit. Fibercrete covers, or steel galvanized covers can be supplied. Also a "Top" ring can be installed on the box which is much like the "Base" only specially designed covers can be placed over the drain holes. Other size boxes can be made, but will be split and preassembled at Concast.

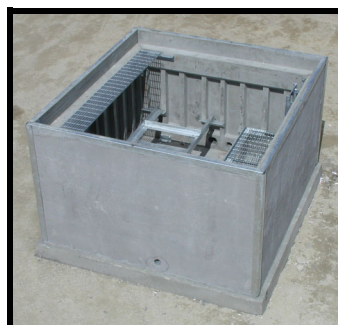
SUBMERSIBLE SWITCHGEAR VAULT

This large vault was designed for the S&C Underground Switchgear, but could house any Switchgear and could be used for many applications. This Modular Vault comes preassembled from Concast. We carry two main sizes of this style of Vault. FCV-120-114-76 which measures 120" x 114" x 76" high and a FCV-90-114-76 which measures 90" x 114" x 76" high. All optional steel hardware is included.

We have been told by customers that this Vault is the "Cadillac" of Vaults, but we've come to realize that many people only need a "Chevy." We will be starting to quote the Vaults with the minimum amount of hardware. We need information from our customers and representatives on their minimum requirements. Concast is in the process of redesigning our cover to be more competitive. Currently we provide a spring assisted cover on one half and a machine removable cover on the other.



ONE INSTALLATION IN MYRTLE BEACH, SC. INSTALLED IN ROADWAY.



AN INSTALLATION IN MYRTLE BEACH, SC. LOCATED IN A PARK