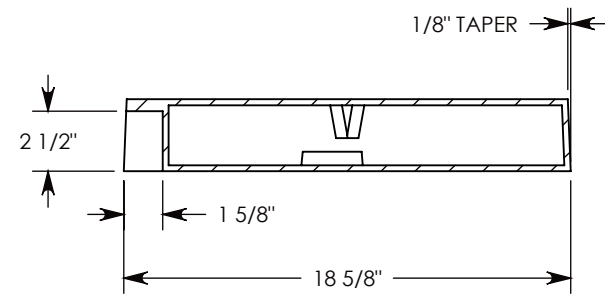
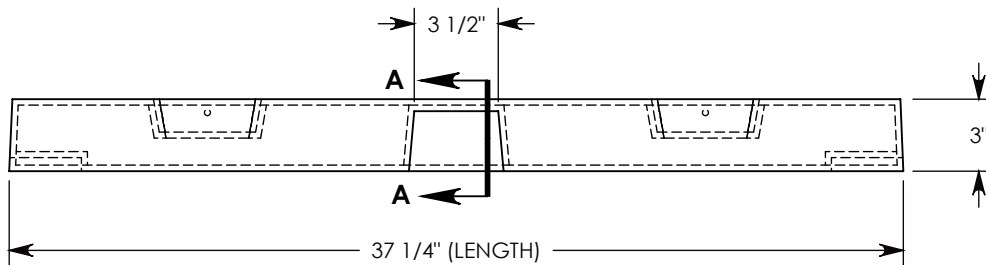
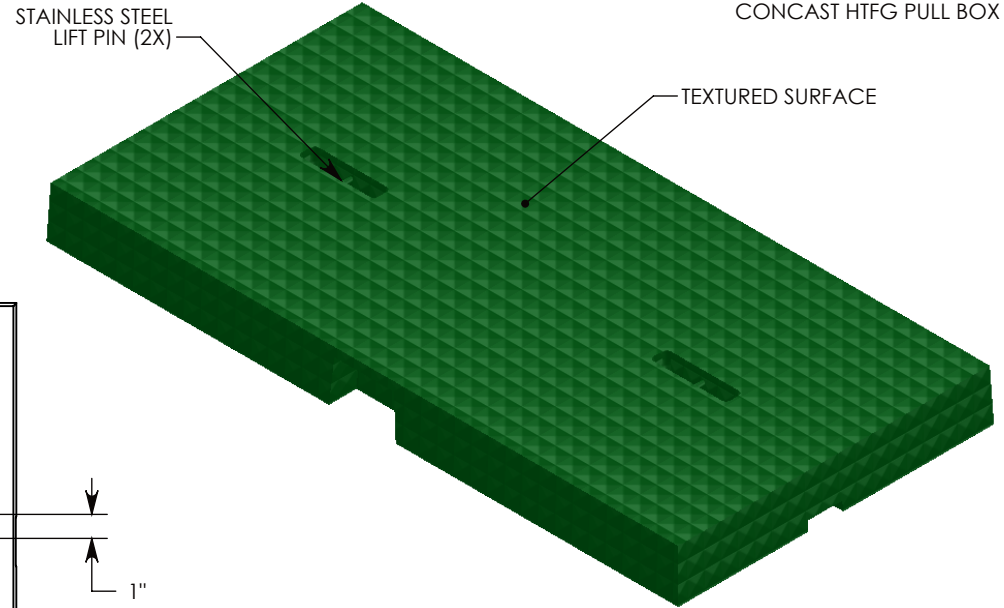
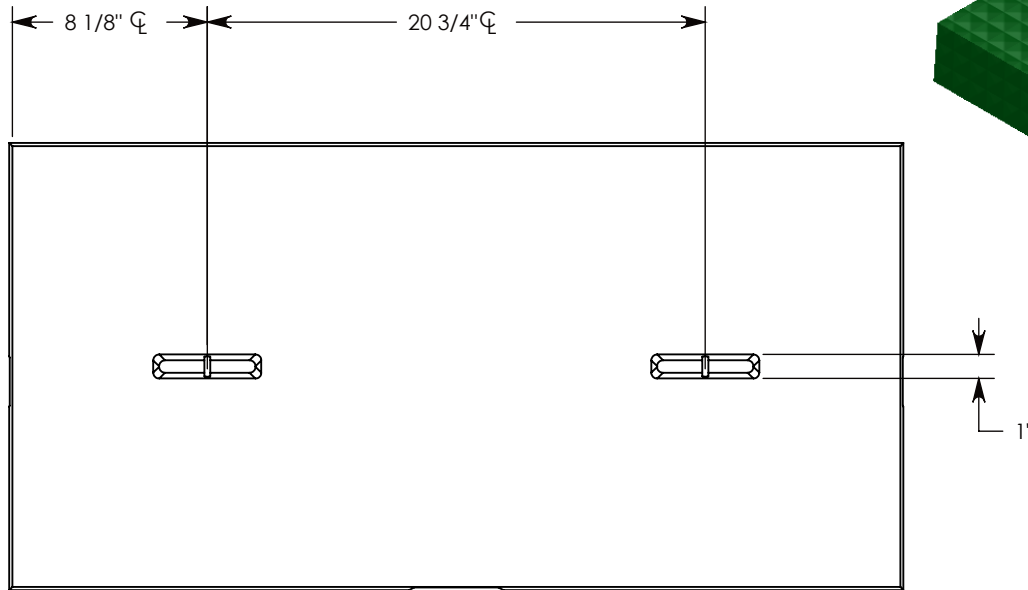


2 OF THESE COVERS ASSEMBLE
ONTO A 38" X 38" OD
CONCAST HTFG PULL BOX



SECTION A-A

H-20 RATED - 32,000 LB. PER AXLE LOAD.

- NOTE 1: GEL COAT - GREEN
- NOTE 2: BOTTOM DETAIL ON SHEET 2
- NOTE 3: 5° DRAFT ON ALL BOTTOM CUTOUTS

DRAWN BY: ROBIN FLINT

DATE: 2/15/2018

REVISION LEVEL: A

WEIGHT:

85 LBS.

MATERIAL:

FIBERGLASS



CONCAST
1010 NORTH STAR DRIVE
P.O. BOX 69
ZUMBROTA, MN 55992-0069

DESCRIPTION:

HEAVY TRAFFIC FIBERGLASS COVER

DIMENSIONS ARE IN INCHES
TOLERANCES:
FRACTIONAL: ± 1/8"
ANGULAR: ± 2°

CONTACT INFORMATION:
EMAIL: INFO@CONCASTINC.COM
PHONE: (507) 732-4095
FAX: (507) 732-4094

SHEET 1 OF 2

PART NUMBER:

38-19-HTFG