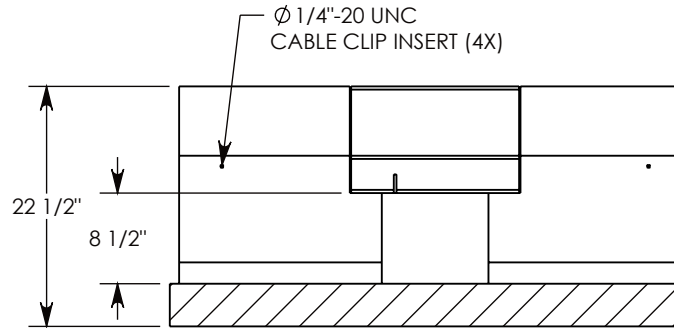
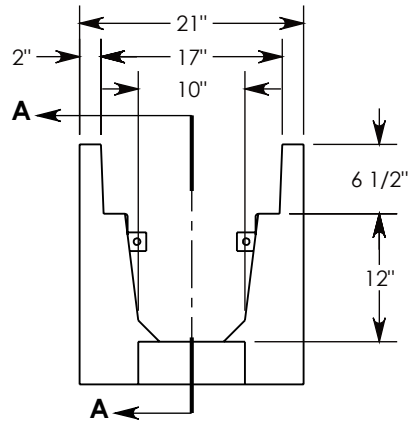
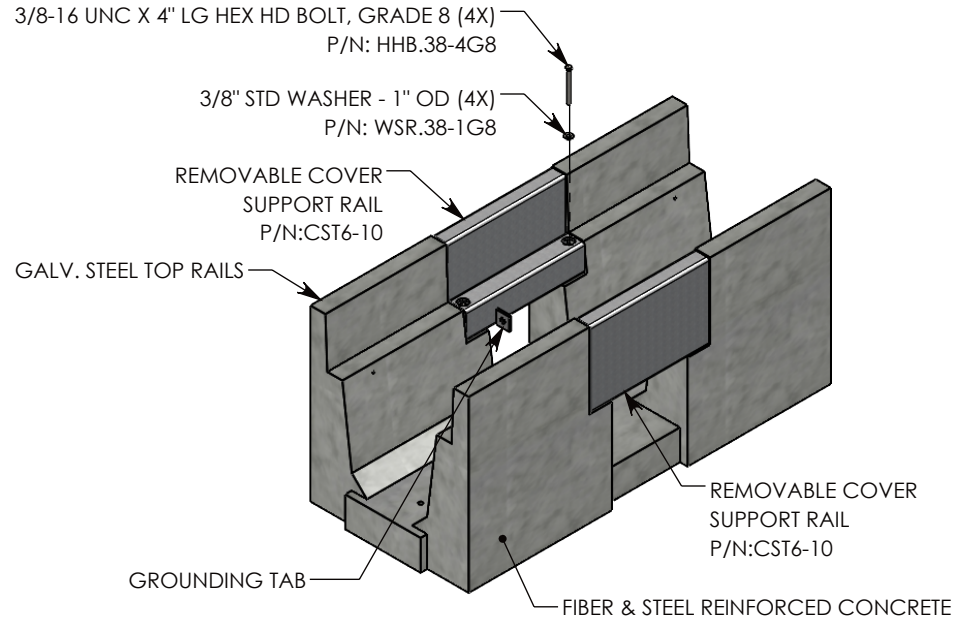
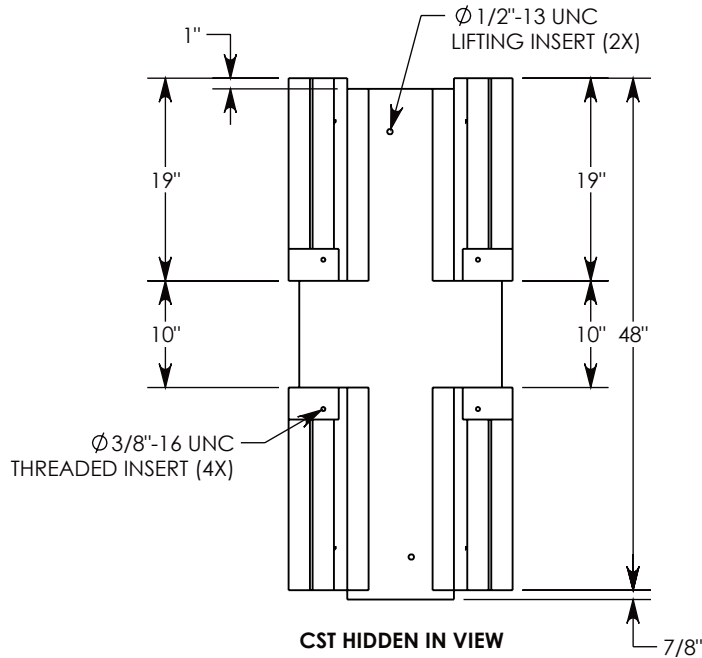


REV. A - DRB - 7/21/2023 - UPDATED TO USE COVER SUPPORT

REV. B - SIC - 9/13/2023 - UPDATED ANNOTATIONS; ADDED DIMENSIONS;  $\phi 1/2$ "-13 UNC INSERT (2X), WAS (4X); UPDATED WEIGHT RATING TO H-40, WAS H-20



**SECTION A-A** MAX AASHTO H-40 RATED - 64,000 LB. SINGLE AXLE LOAD. DEPENDENT ON TRENCH COVER RATING

<b>DRAWN BY: ROBIN LEWIS</b>	
<b>CREATED DATE: 7/14/2008</b>	<b>REVISION LEVEL: B</b>
<b>SAVED DATE: 9/15/2023</b>	<b>SAVED BY: scallahan</b>
<b>WEIGHT: 827 LBS.</b>	<b>MATERIAL: NOTED</b>

1010 NORTH STAR DRIVE  
 P.O. BOX 69  
 ZUMBROTA, MN 55992-0069

<b>DESCRIPTION:</b>		SHEET 1 OF 1
<b>HEAVY TRAFFIC UNIVERSAL CHANNEL</b>		
DIMENSIONS ARE IN INCHES	CONTACT INFORMATION:	PART NUMBER: <b>8012HT (10X10)</b>
TOLERANCES:	EMAIL: INFO@CONCASTINC.COM	
FRACTIONAL: $\pm 1/8$ "	PHONE: (507) 732-4095	
ANGULAR: $\pm 2^\circ$	FAX: (507) 732-4094	