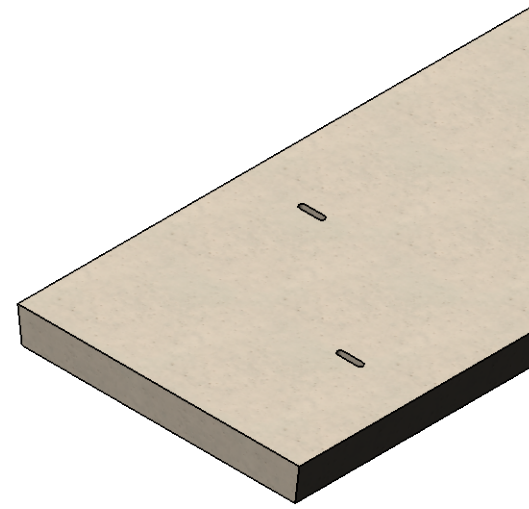
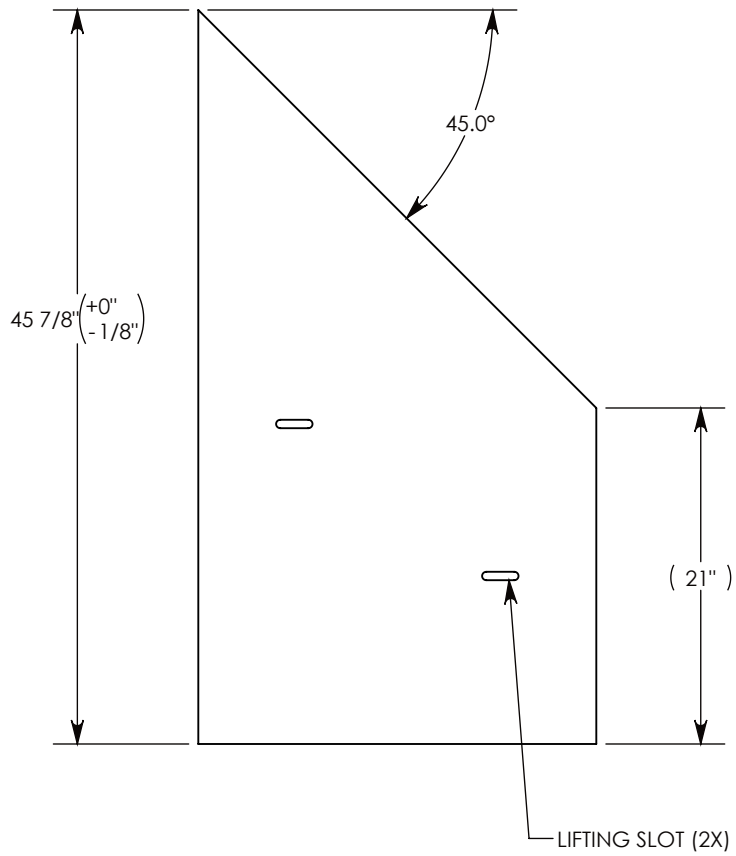
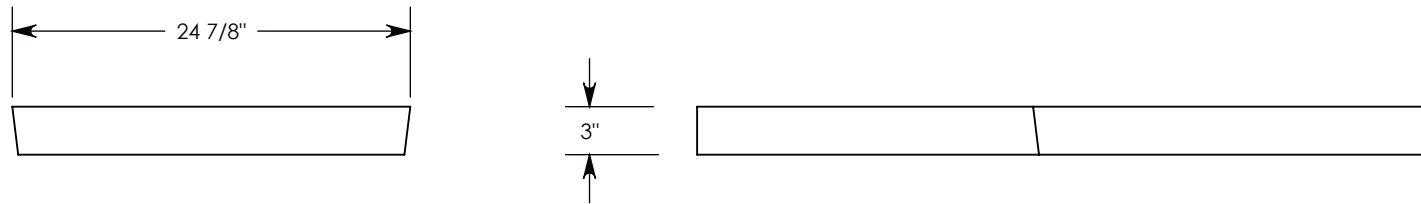


REV A - 2/8/18 - RAL - ADDED RECESS AND THRU HOLE  
 REV B - 10/2/18 - RAL - UPDATED WEIGHT  
 REV C - 8/23/2021 - JCG - REMOVED INSERTS, ADDED LIFTING SLOTS



COVER ASSEMBLES ONTO 20" INSIDE WIDTH  
 HEAVY TRAFFIC RATED CONCAST HT3 CHANNEL



AASHTO H-20 RATED – 32,000 LB. SINGLE AXLE LOAD

DRAWN BY: <b>JESSE GUTTING</b>	
CREATED DATE: <b>8/22/2002</b>	REVISION LEVEL: <b>C</b>
SAVED DATE: <b>8/23/2021</b>	SAVED BY: <b>jgutting</b>
WEIGHT: <b>177 LBS.</b>	MATERIAL: <b>POLYMER</b>

**CONCAST**  
 1010 NORTH STAR DRIVE  
 P.O. BOX 69  
 ZUMBROTA, MN 55992-0069

DESCRIPTION: <b>HEAVY TRAFFIC COVER</b>		SHEET 1 OF 1
DIMENSIONS ARE IN INCHES TOLERANCES: FRACTIONAL: ± 1/8" ANGULAR: ± 2°	CONTACT INFORMATION: EMAIL: <a href="mailto:INFO@CONCASTINC.COM">INFO@CONCASTINC.COM</a> PHONE: (507) 732-4095 FAX: (507) 732-4094	
PART NUMBER: <b>8021HT3P 45R</b>		