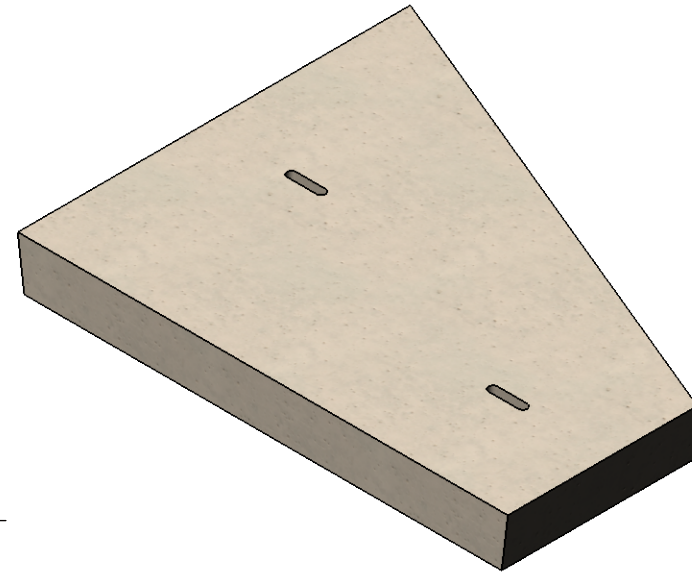
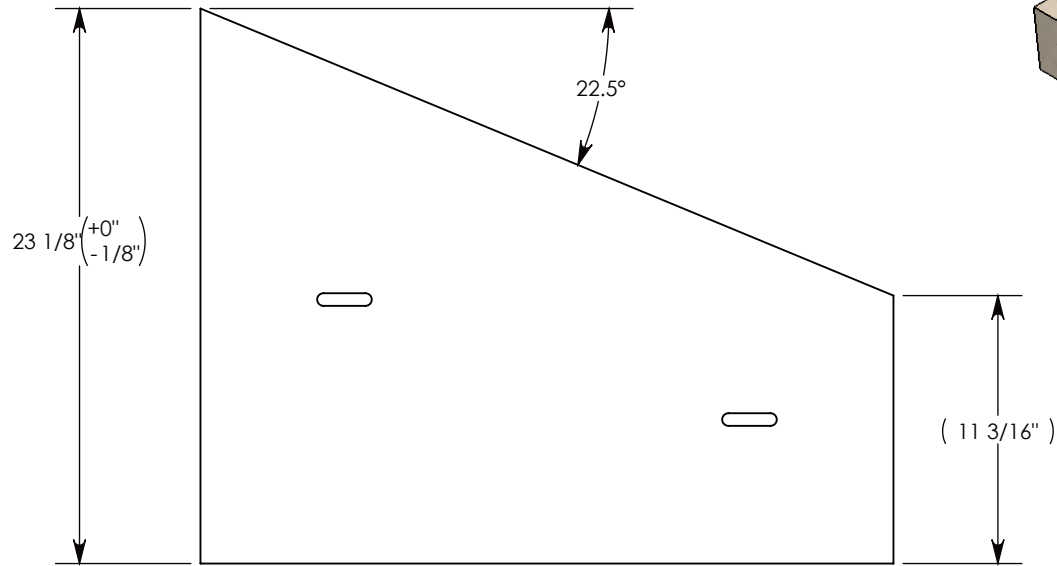


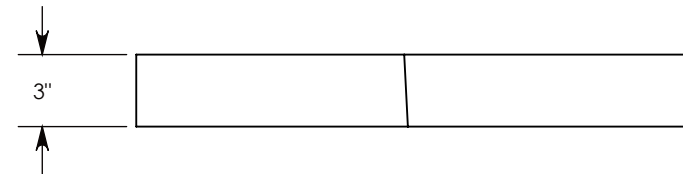
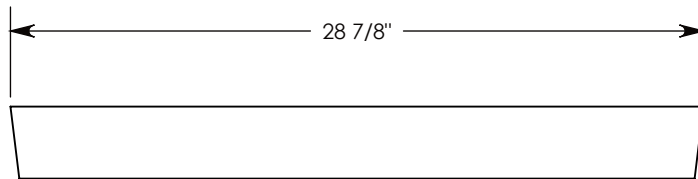
REV A - 2/8/18 - RAL - ADDED RECESS AND THRU HOLE, CHANGED LENGTH TO 23.125"

REV B - 10/2/18 - RAL - UPDATED WEIGHT

REV C - 8/20/2021 - JCG - REMOVED INSERTS, ADDED LIFTING SLOTS



COVER ASSEMBLES ONTO 24" INSIDE WIDTH  
HEAVY TRAFFIC RATED CONCAST HT3 CHANNEL



AASHTO H-20 RATED – 32,000 LB. SINGLE AXLE LOAD

DRAWN BY: **JESSE GUTTING**

CREATED DATE: **8/22/2002** REVISION LEVEL: **C**

SAVED DATE: **8/20/2021** SAVED BY: **jgutting**

WEIGHT: **105 LBS.** MATERIAL: **POLYMER**

 **CONCAST**  
1010 NORTH STAR DRIVE  
P.O. BOX 69  
ZUMBROTA, MN 55992-0069

DESCRIPTION:

**HEAVY TRAFFIC COVER**

DIMENSIONS ARE IN INCHES  
TOLERANCES:  
FRACTIONAL:  $\pm 1/8$ "  
ANGULAR:  $\pm 2^\circ$

CONTACT INFORMATION:  
EMAIL: [INFO@CONCASTINC.COM](mailto:INFO@CONCASTINC.COM)  
PHONE: (507) 732-4095  
FAX: (507) 732-4094

SHEET 1 OF 1

PART NUMBER:

**8025HT3P 22.5R**