

$3/8\text{-16 UNC X } 2.50''$ LG HEX HD BOLT, GRADE 8 (2X)
 P/N: HHB.38-2.5G8

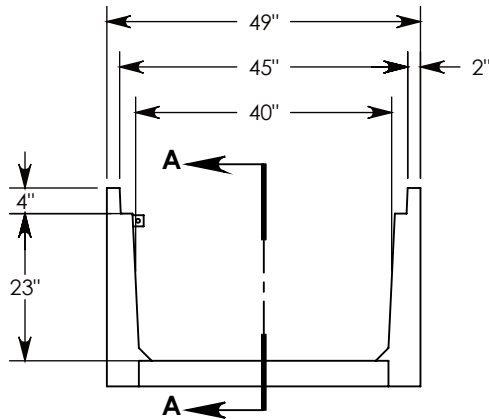
$3/8''$ STD WASHER - 1" OD (2X)
 P/N: WSR.38-1

REMOVABLE COVER
 SUPPORT RAIL
 P/N: CST4-40

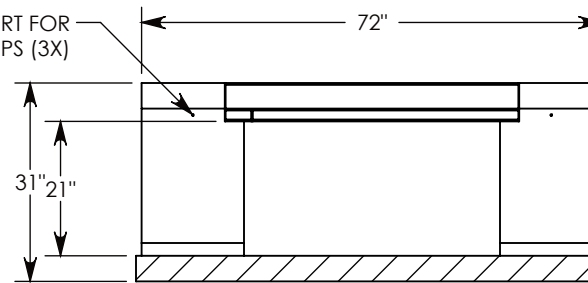
GALV. STEEL TOP RAILS

GROUNDING TAB

STEEL REINFORCED CONCRETE



$\text{Ø } 1/4''$ INSERT FOR
 CABLE CLIPS (3X)



SECTION A-A

AASHTO H-20 RATED - 32,000 LB. SINGLE AXLE LOAD

DRAWN BY: ROSS LAGER

CREATED DATE: 10/16/2019

REVISION LEVEL: A

SAVED DATE: 1/29/2020

SAVED BY: scallahan

WEIGHT:

LBS.

MATERIAL:

NOTED



1010 NORTH STAR DRIVE
 P.O. BOX 69
 ZUMBROTA, MN 55992-0069

DESCRIPTION:

HEAVY TRAFFIC UNIVERSAL CHANNEL

DIMENSIONS ARE IN INCHES

TOLERANCES:
 FRACTIONAL: $\pm 1/8''$
 ANGULAR: $\pm 2^\circ$

CONTACT INFORMATION:

EMAIL: INFO@CONCASTINC.COM
 PHONE: (507) 732-4095
 FAX: (507) 732-4094

SHEET 1 OF 1

PART NUMBER:

804224HT4 (0X40)