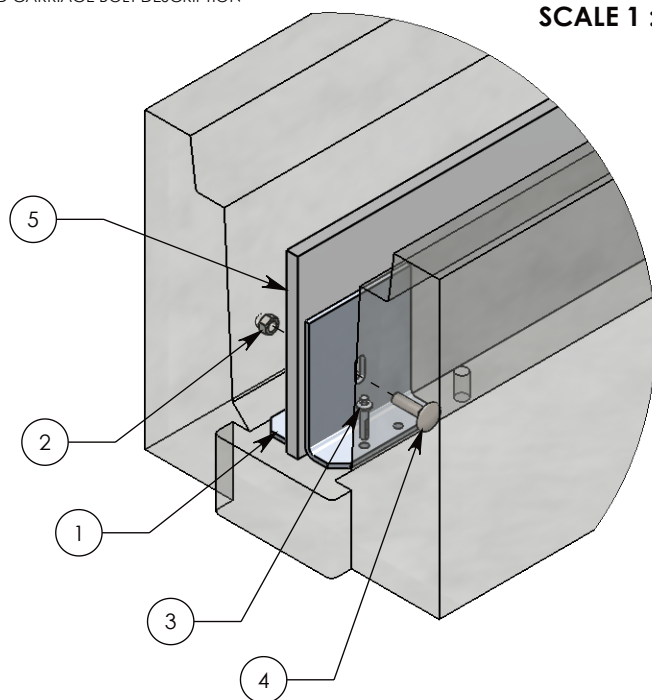
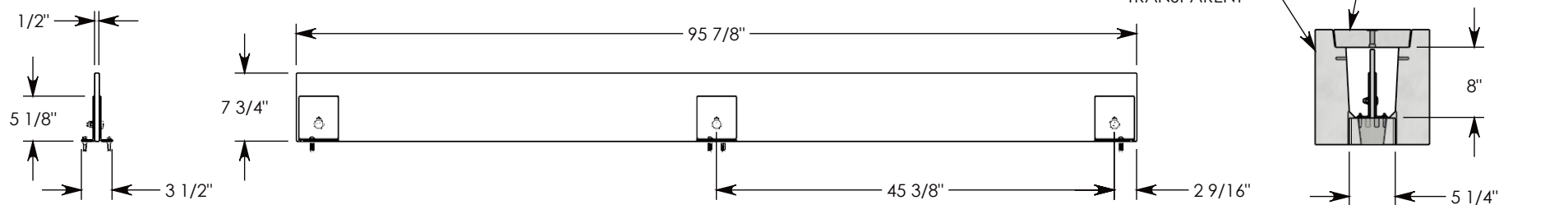
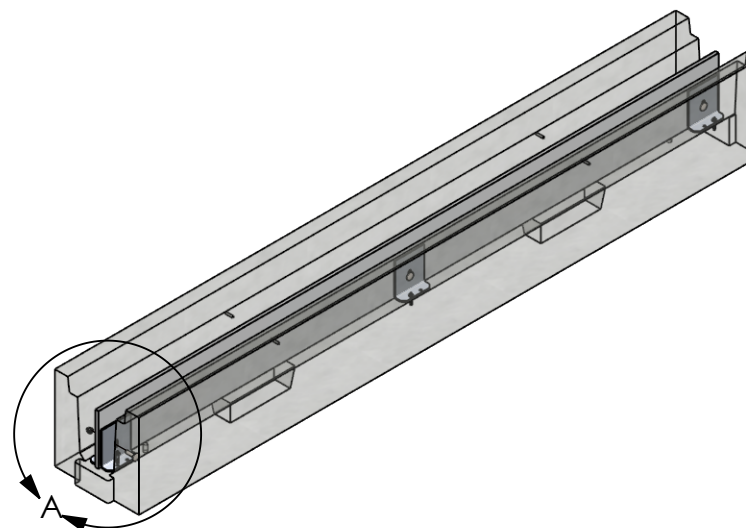


REV B - RLF - 5/15/17 - RENAMED DIVIDER BOARD  
 REV C - JCG - 5/15/17 - CHANGED BOLT AND NUT, REMOVED WASHERS  
 REV D - RAL - 5/2/18 - UPDATED TO ANCHOR PIN BOLTS  
 REV E - MKM - 5/11/18 - UPDATED MODEL & DRAWING  
 REV F - JCG - 10/21/2022 - UPDATED CARRIAGE BOLT DESCRIPTION

**DETAIL A**  
**SCALE 1 : 6**



ITEM NO.	PART NUMBER	DESCRIPTION	QTY.
1	8001AB-1.5	PARTITION BOARD ALUM. L BRACKET	6
2	AN.38	3/8-16 UNC ACORN NUT	3
3	APB25-1.25	ANCHOR PIN BOLT	6
4	CRB.38-1.25-Z	3/8"-16 UNC X 1 1/4" LG CARRIAGE BOLT	3
5	FD7.7596	FIBERCRETE PARTITION BOARD	1



**NOTE 1:** ALL PARTS WILL BE SUPPLIED AT STANDARD LENGTH. FOR SPECIAL LENGTHS: FIELD CUT TO REQUIRED LENGTH  
**NOTE 2:** ANCHOR PIN BOLT-DOWN IS MANDATORY. BOARD IS NOT FREE-STANDING.

DRAWN BY: **ROBIN FLINT**

CREATED DATE: **5/3/2012** REVISION LEVEL: **F**

SAVED DATE: **10/21/2022** SAVED BY: **jgutting**

WEIGHT: **31 LBS.** MATERIAL: **NOTED**

**CONCAST**  
 1010 NORTH STAR DRIVE  
 P.O. BOX 69  
 ZUMBROTA, MN 55992-0069

DESCRIPTION:

**PARTITION BOARD**

DIMENSIONS ARE IN INCHES

TOLERANCES:  
 FRACTIONAL:  $\pm 1/8"$   
 ANGULAR:  $\pm 2^\circ$

CONTACT INFORMATION:  
 EMAIL: [INFO@CONCASTINC.COM](mailto:INFO@CONCASTINC.COM)  
 PHONE: (507) 732-4095  
 FAX: (507) 732-4094

SHEET 1 OF 1

PART NUMBER:

**880108-3.5**