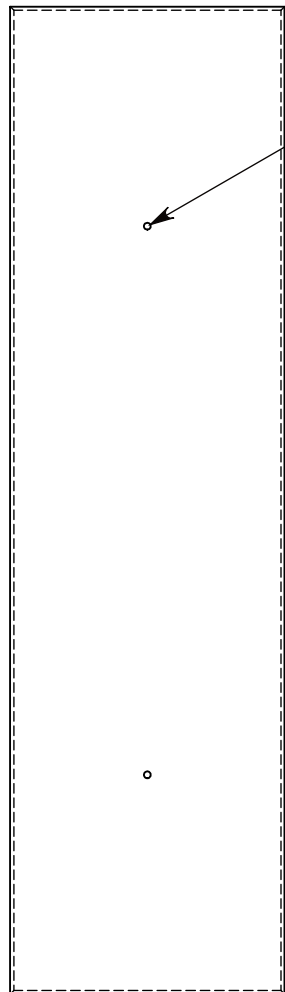
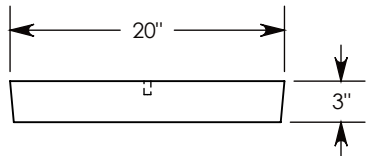


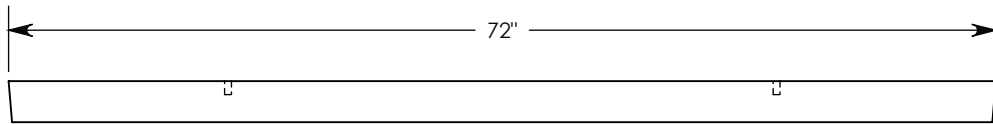
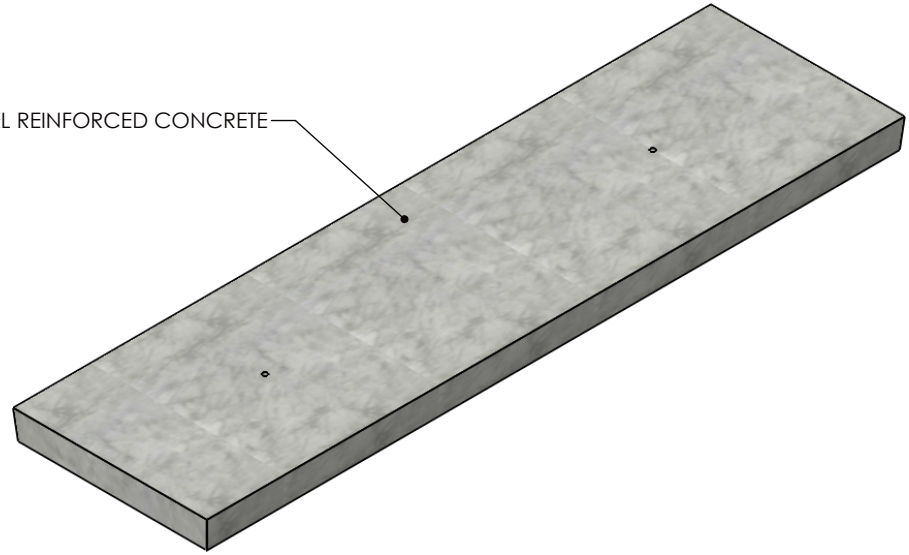
FIBERCRETE[®]
TRENCH
SYSTEM



Ø 1/2"-13 UNC INSERTS
 FOR LIFTING (2X)



STEEL REINFORCED CONCRETE



H10 RATED - 16,000 LB. PER AXLE LOAD. WHEN 20" WIDTH SPANS A TRENCH CHANNEL
 PEDESTRIAN RATED - 200 LB. PER SQ. FOOT WHEN 72" LENGTH SPANS A TRENCH CHANNEL

DRAWN BY: ROBIN FLINT	
DATE: 12/4/2013	REVISION LEVEL: 0
WEIGHT: 348 LBS.	MATERIAL: CONCRETE



CONCAST
 1010 NORTH STAR DRIVE
 P.O. BOX 69
 ZUMBROTA, MN 55992-0069

DESCRIPTION: CONCRETE COVER		
DIMENSIONS ARE IN INCHES TOLERANCES: FRACTIONAL: ± 1/8" ANGULAR: ± 2°	CONTACT INFORMATION: EMAIL: INFO@CONCASTINC.COM PHONE: (507) 732-4095 FAX: (507) 732-4094	SHEET 1 OF 1
PART NUMBER: C2072-3		