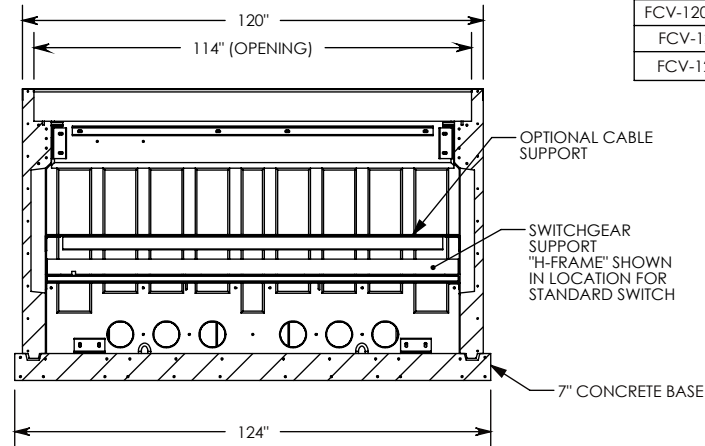
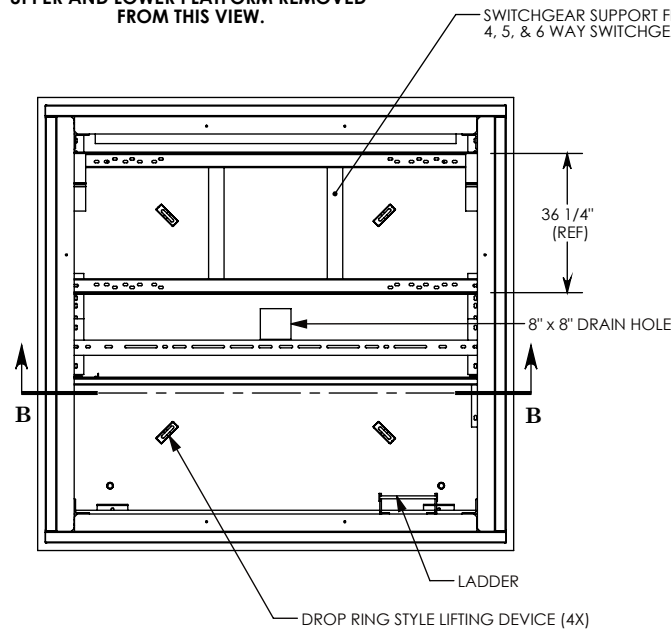
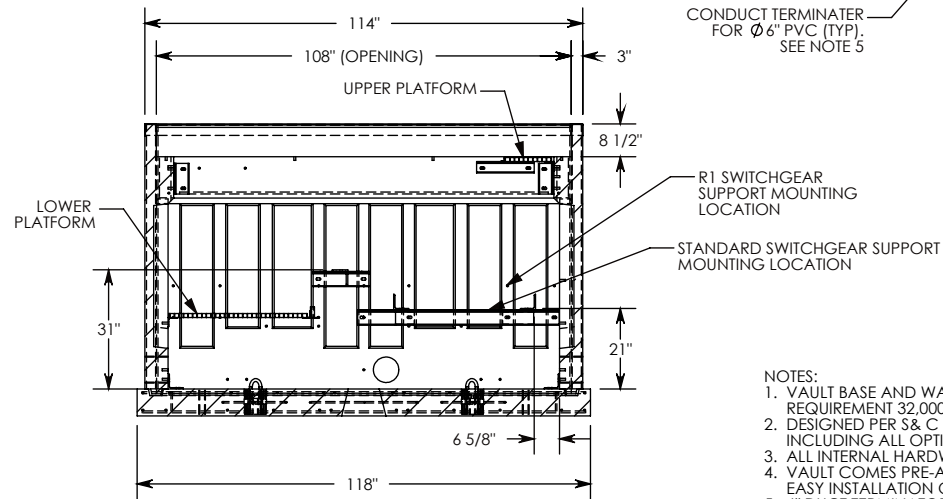
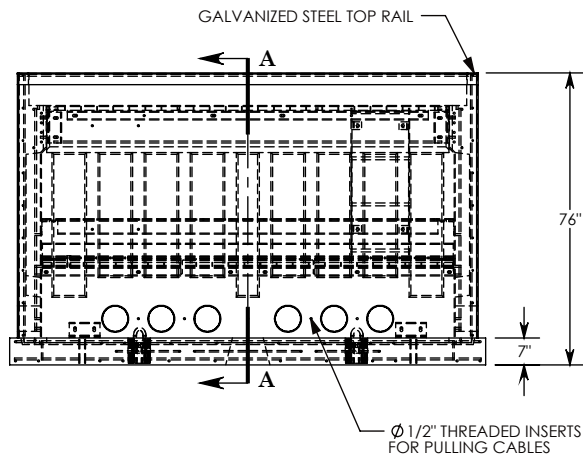


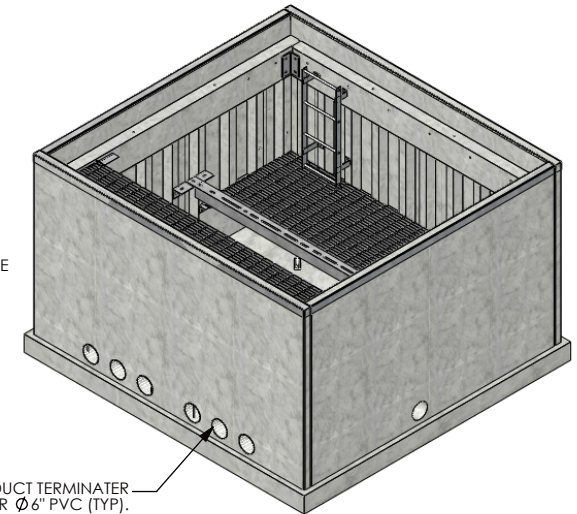
UPPER AND LOWER PLATFORM REMOVED  
FROM THIS VIEW.



SECTION B-B



SECTION A-A



- NOTES:
1. VAULT BASE AND WALLS MEET AASHTO H-20 HEAVY EQUIPMENT REQUIREMENT 32,000 LB. AXLE LOAD.
  2. DESIGNED PER S&C PULL BOX SPECIFICATIONS DATA SHEET 681-51. INCLUDING ALL OPTIONAL INTERIOR STEEL HARDWARE.
  3. ALL INTERNAL HARDWARE IS GALVANIZED STEEL.
  4. VAULT COMES PRE-ASSEMBLED WITH COVERS REMOVED FOR EASY INSTALLATION OF YOUR SWITCHGEAR.
  5. 6" DUCT TERMINATORS CAST INTO THE WALLS ARE TYPICAL, BUT ANY SPECIAL SIZE HOLES OR KNOCKOUTS CAN BE ORDERED.
  6. UNIT MUST BE LIFTED VIA THE FOUR CAST-IN, DROP RING LIFTING DEVICES SHOWN.
  7. LISTED WEIGHT IS THE ASSEMBLED VAULT WITHOUT THE COVER.

# VAULT PACKAGE BILL OF MATERIALS (BOM)

PART NUMBER	DESCRIPTION	QTY
FCV-120-114-76-SG	VAULT WITH GALVANIZED STEEL HARDWARE	1
FCV-120-114-FX	FIXED STEEL COVER WITH STD. DECK PLATE	1
FCV-120-114-SA	SPRING-ASSISTED STEEL COVER WITH STD. DECK PLATE	1

DRAWN BY: ROBIN FLINT

DATE: 6/21/2012

REVISION LEVEL: 0

WEIGHT:

21354 LBS.

MATERIAL:

NOTED



## DESCRIPTION:

## PRECAST CONCRETE VAULT

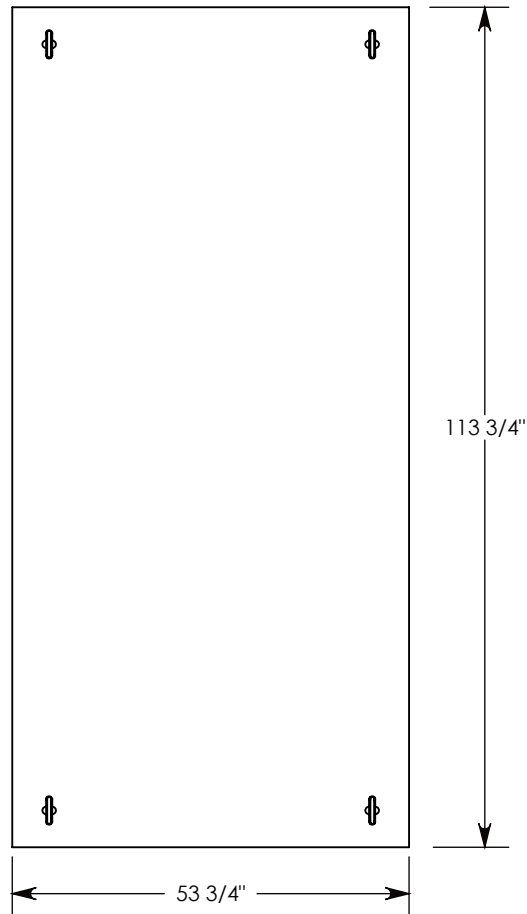
DIMENSIONS ARE IN INCHES  
TOLERANCES:  
FRACTIONAL: ± 1/8"  
ANGULAR: ± 2°

CONTACT INFORMATION:  
EMAIL: INFO@CONCASTINC.COM  
PHONE: (507) 732-4095  
FAX: (507) 732-4094

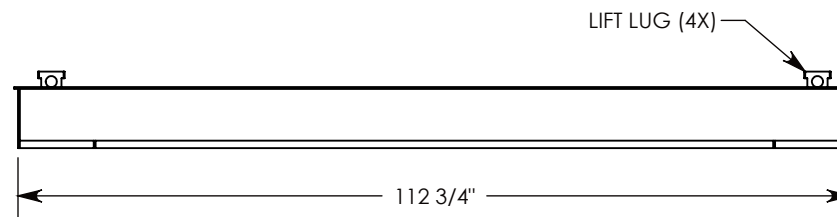
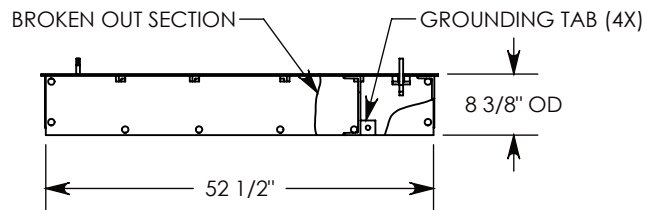
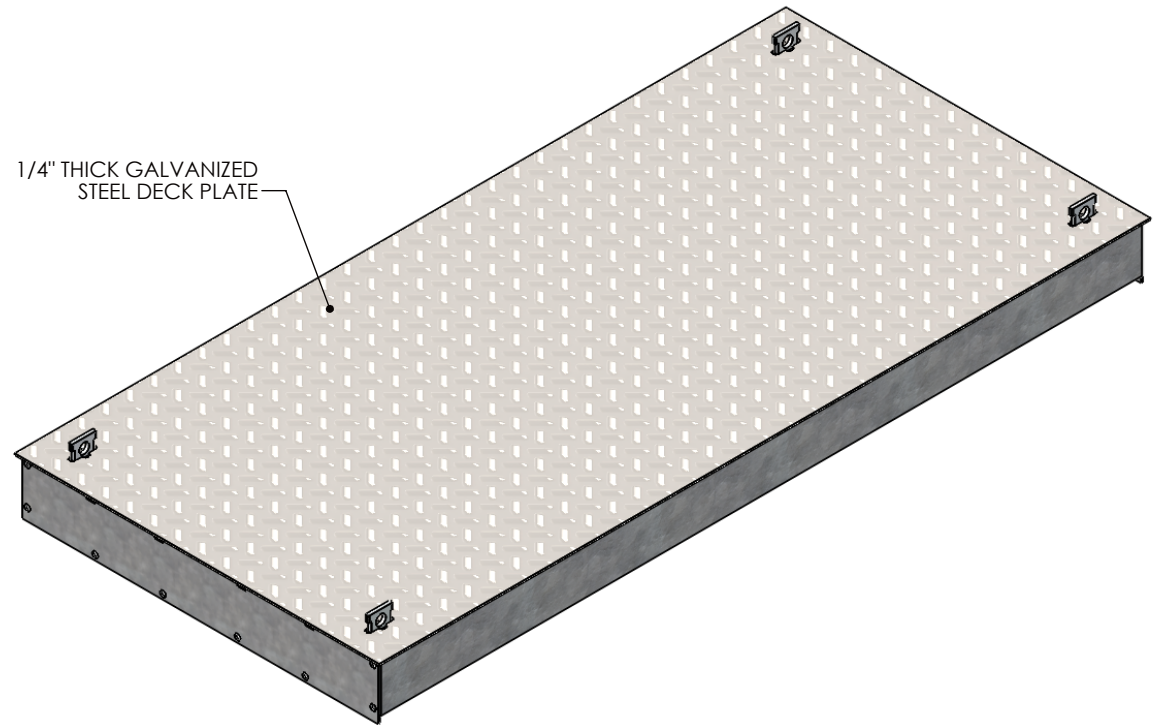
SHEET 1 OF --

## PART NUMBER:

FCV-120-114-76-SG1



1/4" THICK GALVANIZED  
STEEL DECK PLATE



**NOTE 1:** COVER FITS A 120-114 VAULT (OPENINGSIZE = 114" X108")

H2O RATED - 32,000 LB. PER AXLE LOAD.

**DRAWN BY:** ROBIN FLINT

**DATE:** 10/3/2013

**REVISION LEVEL:** 0

**WEIGHT:**

1297 LBS.

**MATERIAL:**

WELDED GALV. STEEL



**DESCRIPTION:**

**VAULT COVER - FIXED**

DIMENSIONS ARE IN INCHES

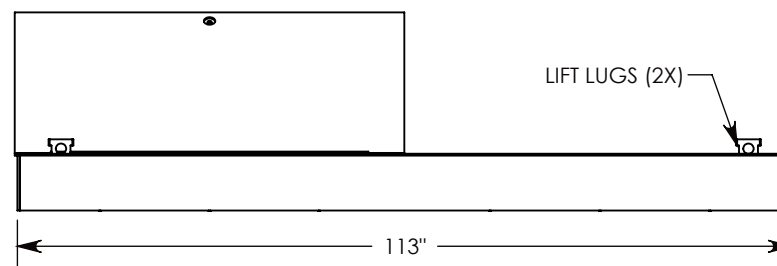
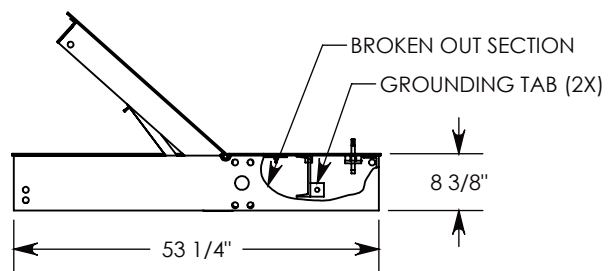
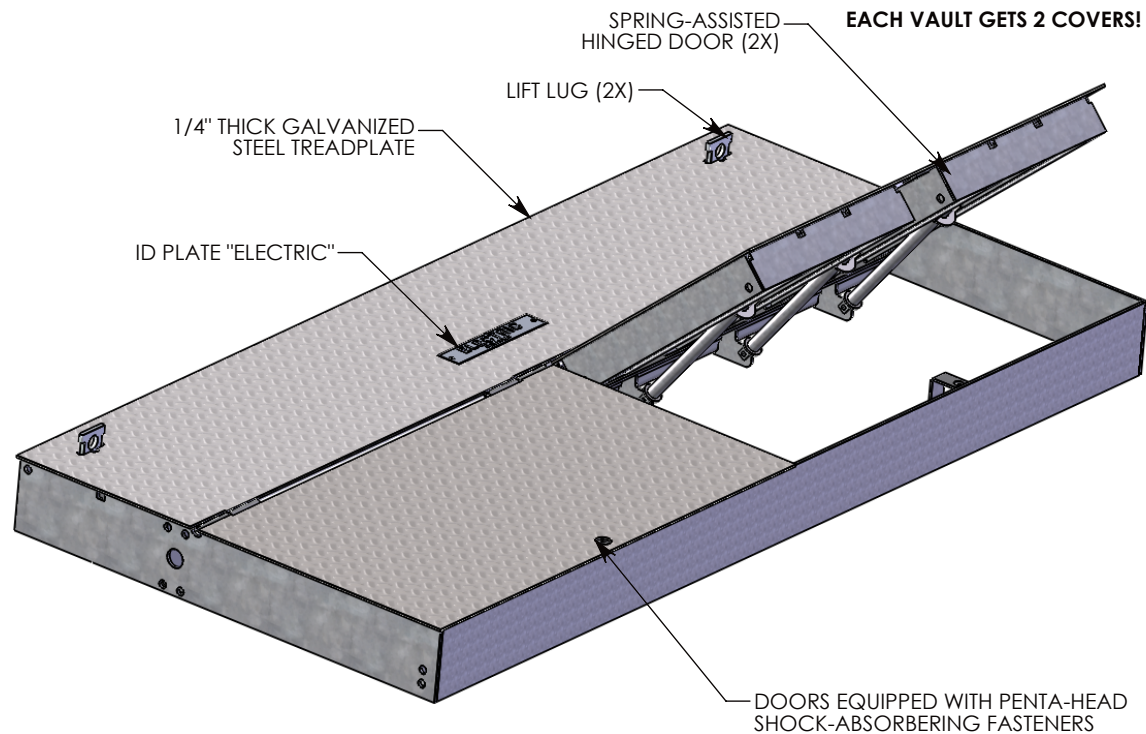
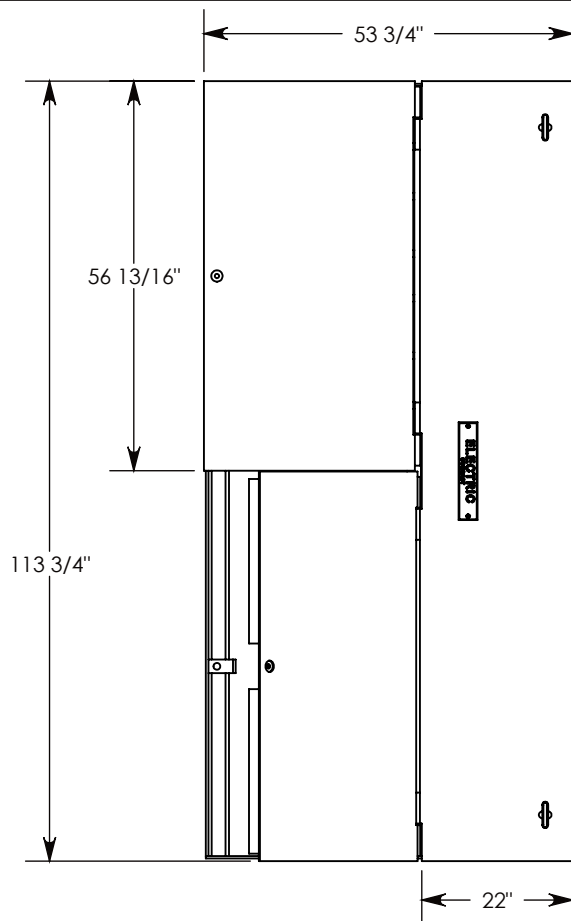
TOLERANCES:  
FRACTIONAL:  $\pm 1/8"$   
ANGULAR:  $\pm 2^\circ$

CONTACT INFORMATION:  
EMAIL: INFO@CONCASTINC.COM  
PHONE: (507) 732-4095  
FAX: (507) 732-4094

SHEET 1 OF 2

**PART NUMBER:**

**FCV-120-114-FX**



**NOTE 1:** COVER FITS A 120-114 VAULT (OPENINGSIZE = 114" X108" )

H20 RATED - 32,000 LB. PER AXLE LOAD.

**DRAWN BY:** ROBIN FLINT

**DATE:** 10/3/2013

**REVISION LEVEL:** 0

**WEIGHT:**

**1530 LBS.**

**MATERIAL:**

**WELDED GALV. STEEL**



**DESCRIPTION:**

**VAULT COVER SPRING-ASSISTED**

DIMENSIONS ARE IN INCHES

TOLERANCES:  
FRACTIONAL:  $\pm 1/8"$   
ANGULAR:  $\pm 2^\circ$

CONTACT INFORMATION:  
EMAIL: INFO@CONCASTINC.COM  
PHONE: (507) 732-4095  
FAX: (507) 732-4094

SHEET 1 OF 2

**PART NUMBER:**

**FCV-120-114-SA**