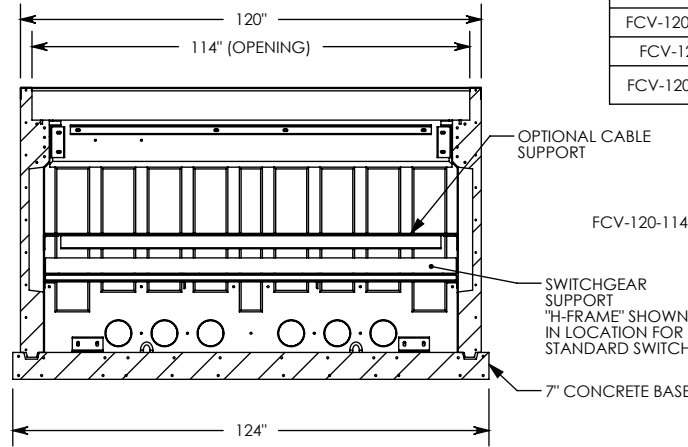
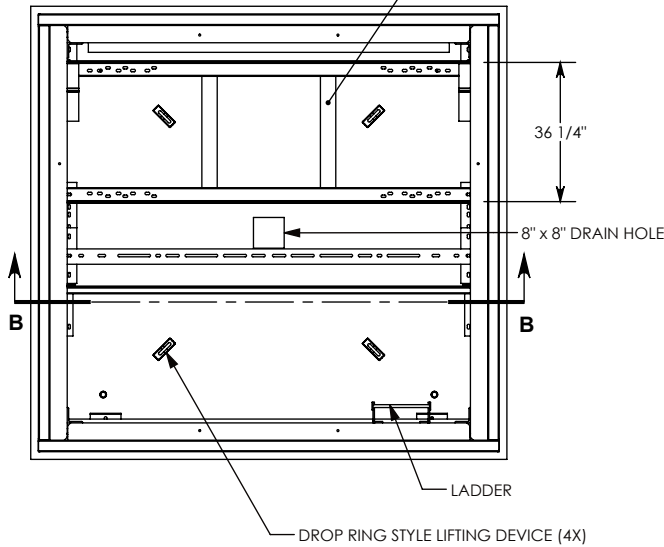
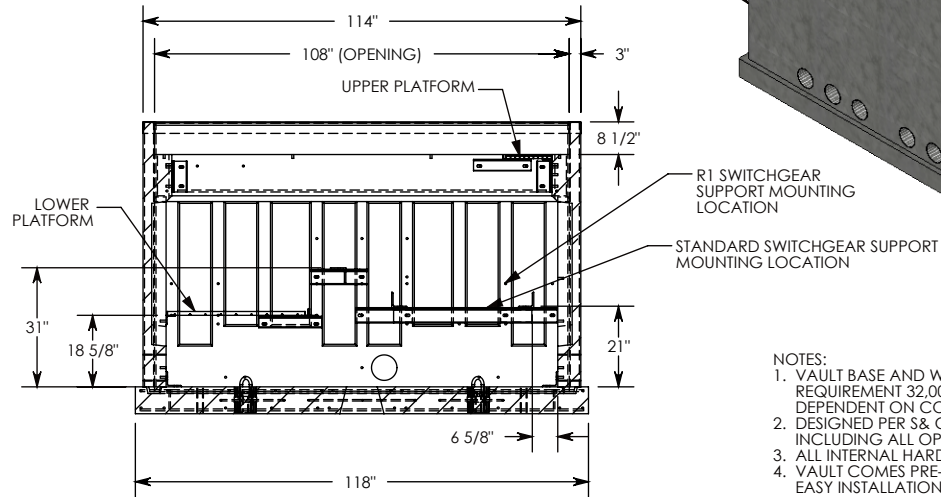
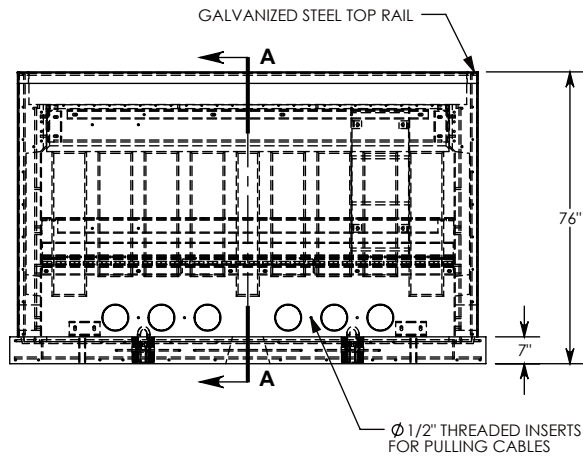


UPPER AND LOWER PLATFORM REMOVED FROM THIS VIEW.

SWITCHGEAR SUPPORT FITS 4, 5, & 6 WAY SWITCHGEAR UNITS.



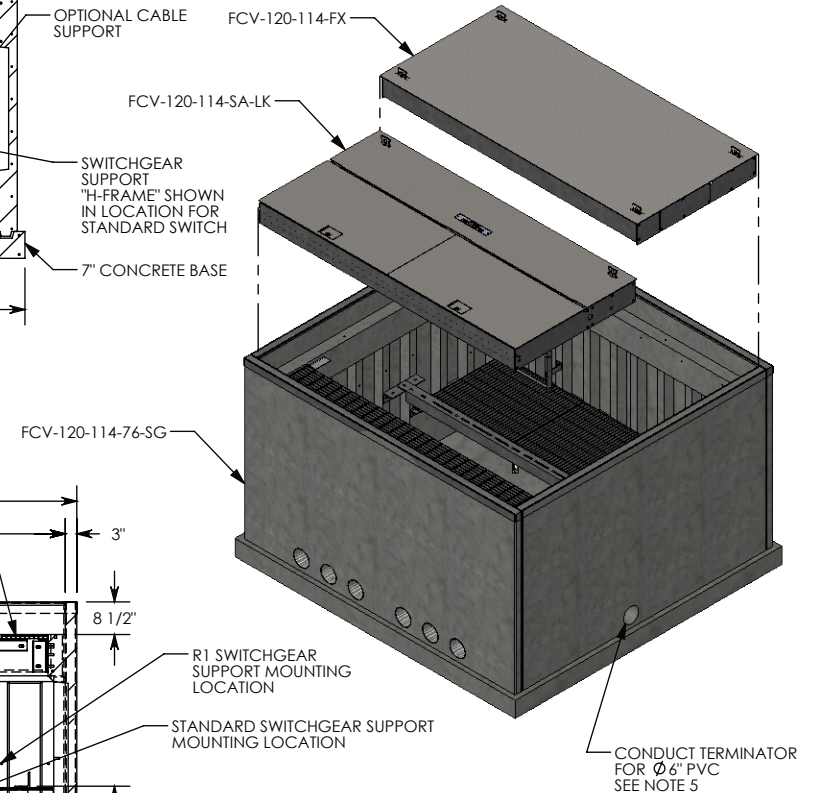
SECTION B-B



SECTION A-A

**VAULT PACKAGE BILL OF MATERIALS (BOM)**

| PART NUMBER       | DESCRIPTION  | QTY |
|-------------------|--|-----|
| FCV-120-114-76-SG | VAULT WITH GALVANIZED STEEL HARDWARE                                 | 1   |
| FCV-120-114-FX    | FIXED STEEL COVER WITH STD. DECK PLATE                               | 1   |
| FCV-120-114-SA-LK | SPRING-ASSISTED STEEL COVER WITH STD. DECK PLATE & PADLOCK PROVISION | 1   |



- NOTES:
1. VAULT BASE AND WALLS MEET AASHTO H-20 HEAVY EQUIPMENT REQUIREMENT 32,000 LB. AXLE LOAD. OVERALL VAULT RATING DEPENDENT ON COVERS.
  2. DESIGNED PER S & C PULL BOX SPECIFICATIONS DATA SHEET 681-51. INCLUDING ALL OPTIONAL INTERIOR STEEL HARDWARE.
  3. ALL INTERNAL HARDWARE IS GALVANIZED STEEL.
  4. VAULT COMES PRE-ASSEMBLED WITH COVERS REMOVED FOR EASY INSTALLATION OF YOUR SWITCHGEAR.
  5. 6" DUCT TERMINATORS CAST INTO THE WALLS ARE TYPICAL, BUT ANY SPECIAL SIZE HOLES OR KNOCKOUTS CAN BE ORDERED.
  6. UNIT MUST BE LIFTED VIA THE FOUR CAST-IN, DROP RING LIFTING DEVICES SHOWN.
  7. LISTED WEIGHT IS THE ASSEMBLED VAULT WITH THE COVERS.

DRAWN BY: **JESSE GUTTING**

CREATED DATE: **10/20/2009** REVISION LEVEL: **0**

SAVED DATE: **3/24/2020** SAVED BY: **jgutting**

WEIGHT: **24119 LBS.** MATERIAL: **NOTED**

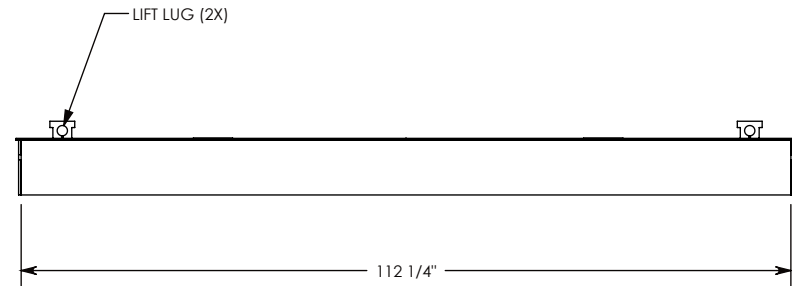
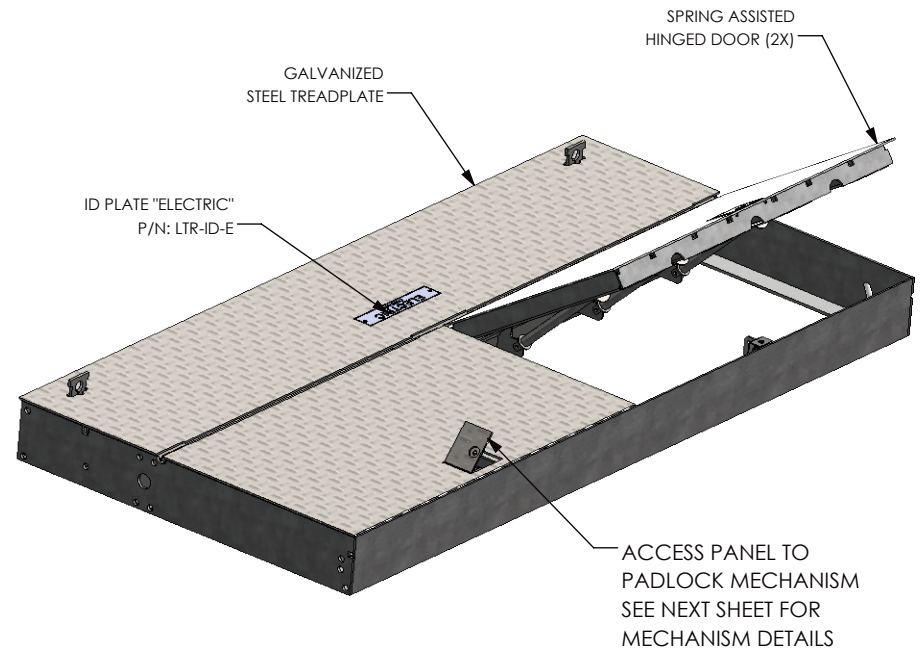
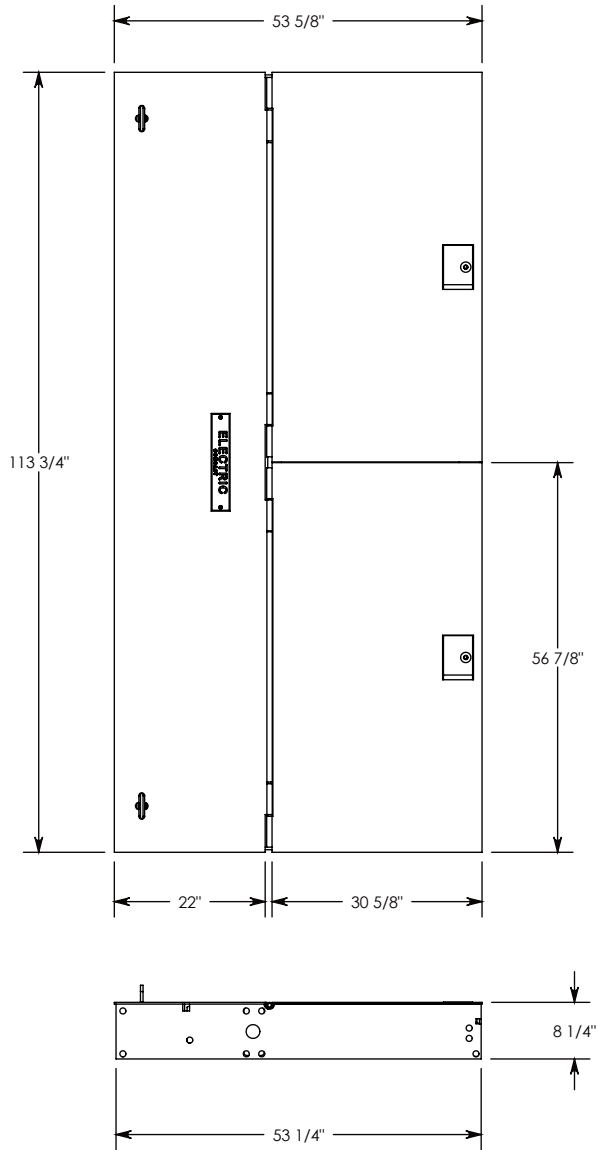


1010 NORTH STAR DRIVE  
P.O. BOX 69  
ZUMBROTA, MN 55992-0069

DESCRIPTION:  
**PRECAST CONCRETE VAULT**

|  |   |              |
|--|---|--------------|
| DIMENSIONS ARE IN INCHES<br>TOLERANCES:<br>FRACTIONAL: ± 1/8"<br>ANGULAR: ± 2° | CONTACT INFORMATION:<br>EMAIL: <a href="mailto:INFO@CONCASTINC.COM">INFO@CONCASTINC.COM</a><br>PHONE: (507) 732-4095<br>FAX: (507) 732-4094 | SHEET 1 OF 5 |
|--|---|--------------|

PART NUMBER:  
**FCV-120-114-76-SG2**



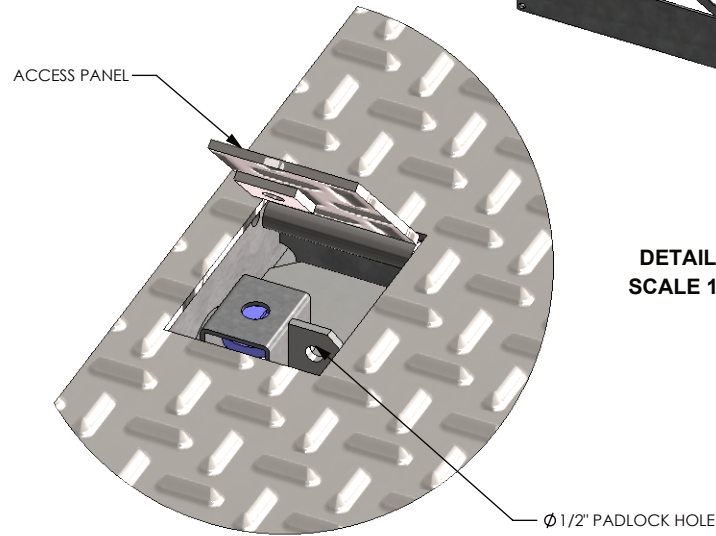
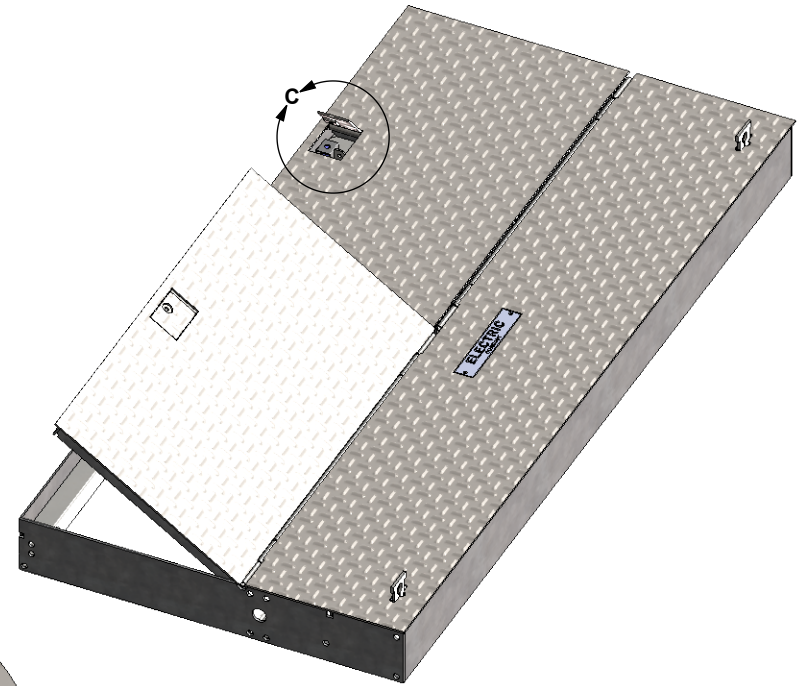
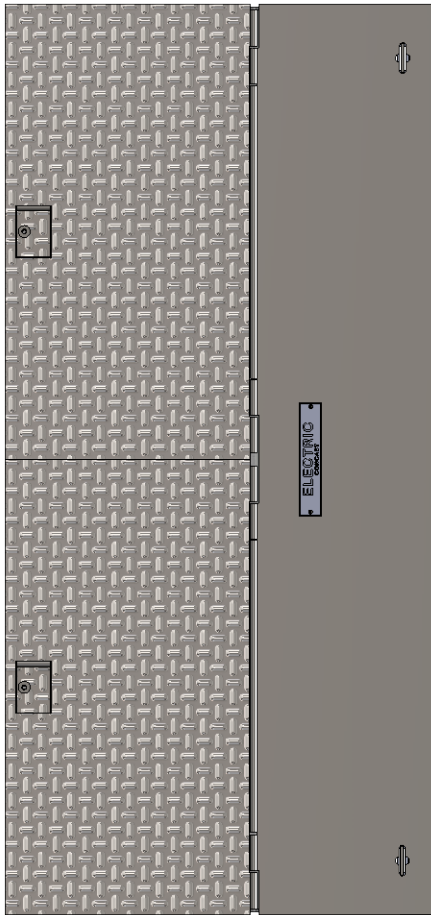
NOTE 1: COVER FITS A 120 - 114 VAULT (OPENING SIZE = 114" X 108")

AASHTO H-20 RATED – 32,000 LB. SINGLE AXLE LOAD

|                                 |                                     |
|---------------------------------|-------------------------------------|
| DRAWN BY: <b>JESSE GUTTING</b>  |                                     |
| CREATED DATE: <b>10/20/2009</b> | REVISION LEVEL: <b>0</b>            |
| SAVED DATE: <b>3/24/2020</b>    | SAVED BY: <b>jgutting</b>           |
| WEIGHT: <b>1446 LBS.</b>        | MATERIAL: <b>WELDED GALV. STEEL</b> |

**CONCAST**  
 1010 NORTH STAR DRIVE  
 P.O. BOX 69  
 ZUMBROTA, MN 55992-0069

|  |   |              |
|--|---|--------------|
| DESCRIPTION:<br><b>HINGED VAULT DOUBLE COVER</b>                               |   | SHEET 2 OF 5 |
| DIMENSIONS ARE IN INCHES<br>TOLERANCES:<br>FRACTIONAL: ± 1/8"<br>ANGULAR: ± 2° | CONTACT INFORMATION:<br>EMAIL: <a href="mailto:INFO@CONCASTINC.COM">INFO@CONCASTINC.COM</a><br>PHONE: (507) 732-4095<br>FAX: (507) 732-4094 |              |
| PART NUMBER:<br><b>FCV-120-114-SA-LK</b>                                       |   |              |



**DETAIL C**  
**SCALE 1 : 5**

**NOTE 1:** COVER FITS A 120 - 114 VAULT (OPENING SIZE = 114" X 108")

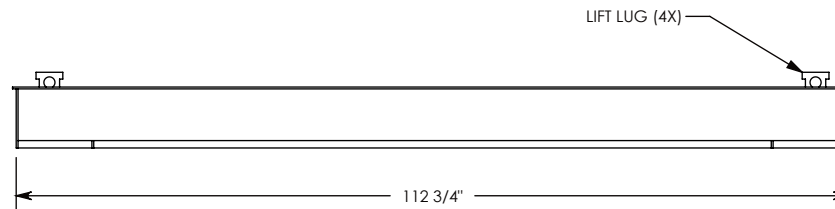
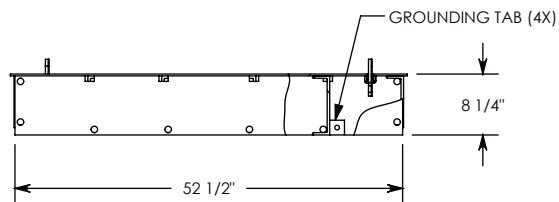
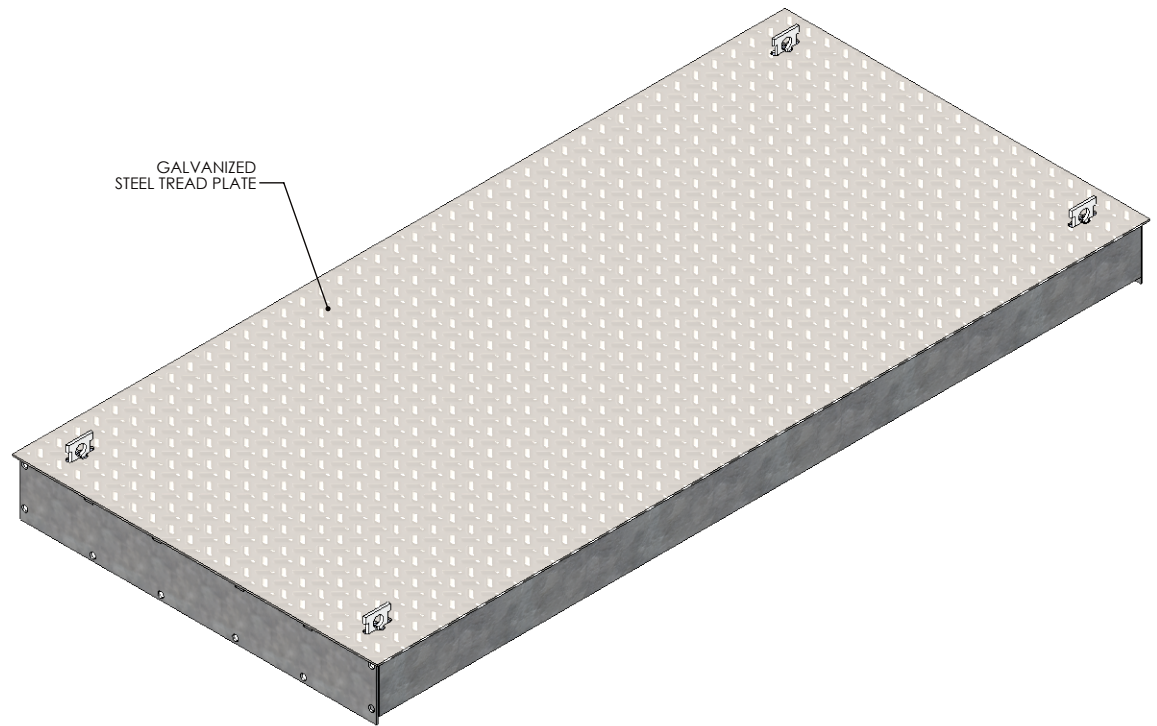
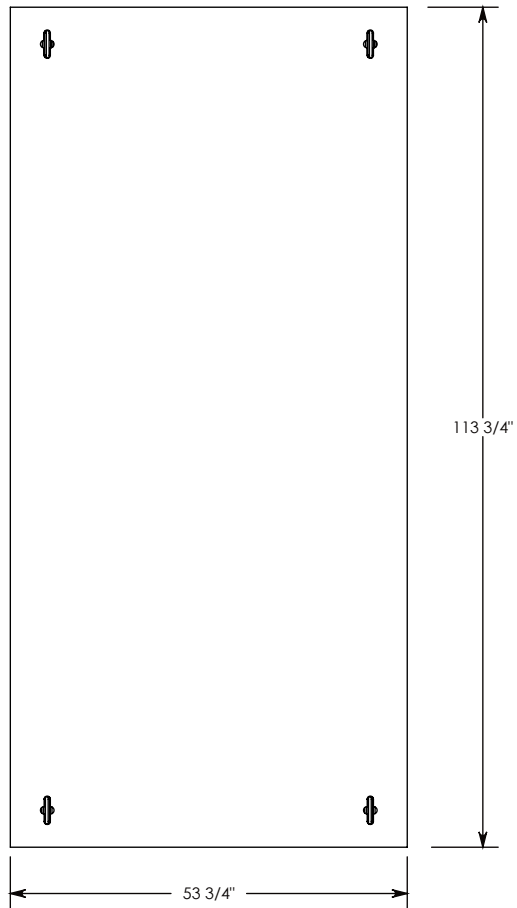
AASHTO H-20 RATED – 32,000 LB. SINGLE AXLE LOAD

|                                 |                                     |
|---------------------------------|-------------------------------------|
| DRAWN BY: <b>JESSE GUTTING</b>  |                                     |
| CREATED DATE: <b>10/20/2009</b> | REVISION LEVEL: <b>0</b>            |
| SAVED DATE: <b>3/24/2020</b>    | SAVED BY: <b>jgutting</b>           |
| WEIGHT: <b>1446 LBS.</b>        | MATERIAL: <b>WELDED GALV. STEEL</b> |



**CONCAST**  
1010 NORTH STAR DRIVE  
P.O. BOX 69  
ZUMBROTA, MN 55992-0069

|  |   |              |
|--|---|--------------|
| DESCRIPTION:<br><b>HINGED VAULT DOUBLE COVER</b>                               |   | SHEET 3 OF 5 |
| DIMENSIONS ARE IN INCHES<br>TOLERANCES:<br>FRACTIONAL: ± 1/8"<br>ANGULAR: ± 2° | CONTACT INFORMATION:<br>EMAIL: <a href="mailto:INFO@CONCASTINC.COM">INFO@CONCASTINC.COM</a><br>PHONE: (507) 732-4095<br>FAX: (507) 732-4094 |              |
| PART NUMBER:<br><b>FCV-120-114-SA-LK</b>                                       |   |              |



**NOTE 1:** COVER FITS A 120-114 VAULT (OPENINGSIZE = 114" X108")

AASHTO H-20 RATED – 32,000 LB. SINGLE AXLE LOAD

|                                 |                                     |
|---------------------------------|-------------------------------------|
| DRAWN BY: <b>JESSE GUTTING</b>  |                                     |
| CREATED DATE: <b>10/20/2009</b> | REVISION LEVEL: <b>0</b>            |
| SAVED DATE: <b>3/24/2020</b>    | SAVED BY: <b>jgutting</b>           |
| WEIGHT: <b>1287 LBS.</b>        | MATERIAL: <b>WELDED GALV. STEEL</b> |



**CONCAST**  
 1010 NORTH STAR DRIVE  
 P.O. BOX 69  
 ZUMBROTA, MN 55992-0069

|  |   |              |
|--|---|--------------|
| DESCRIPTION:<br><b>VAULT COVER - FIXED</b>                                     |   | SHEET 4 OF 5 |
| DIMENSIONS ARE IN INCHES<br>TOLERANCES:<br>FRACTIONAL: ± 1/8"<br>ANGULAR: ± 2° | CONTACT INFORMATION:<br>EMAIL: <a href="mailto:INFO@CONCASTINC.COM">INFO@CONCASTINC.COM</a><br>PHONE: (507) 732-4095<br>FAX: (507) 732-4094 |              |
| PART NUMBER:<br><b>FCV-120-114-FX</b>  |   |              |