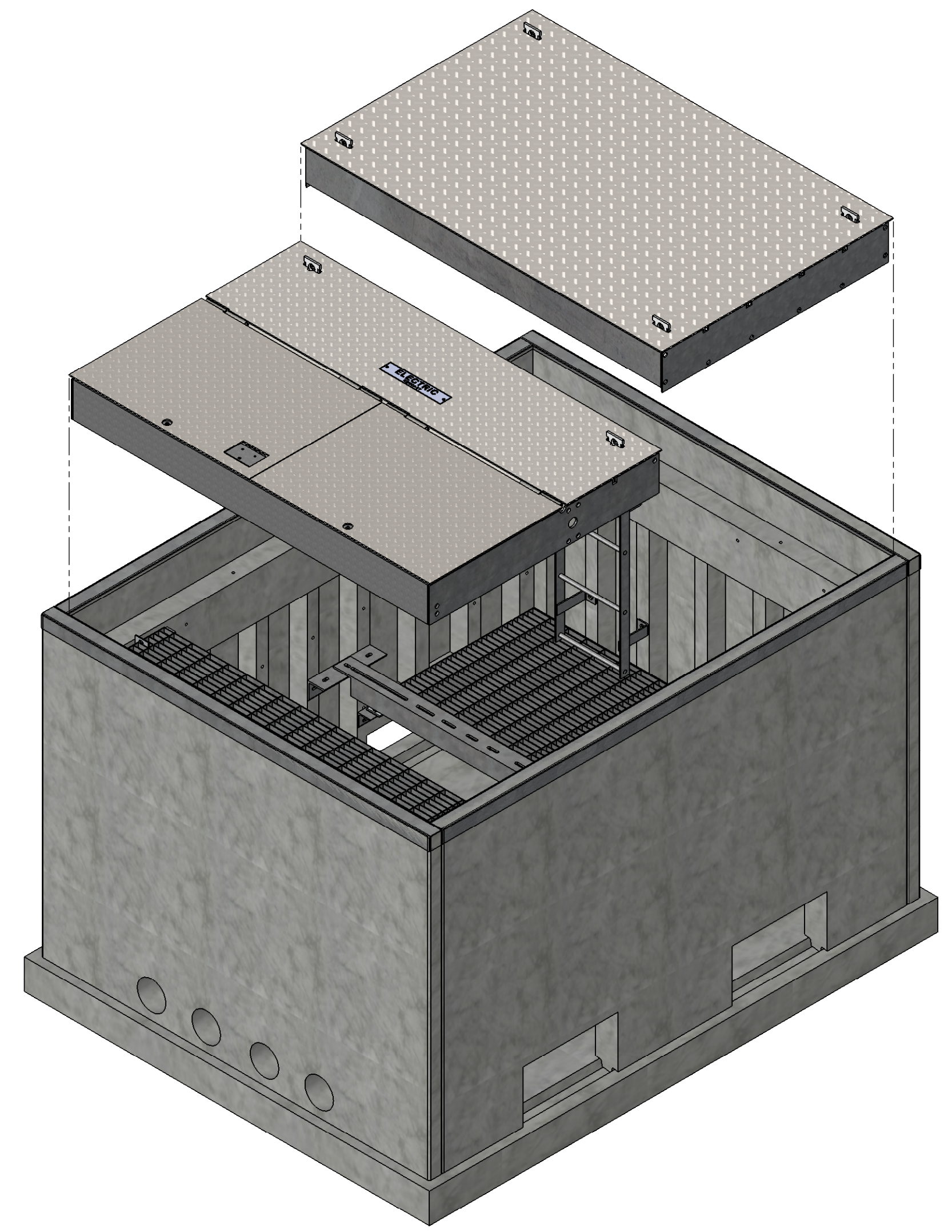
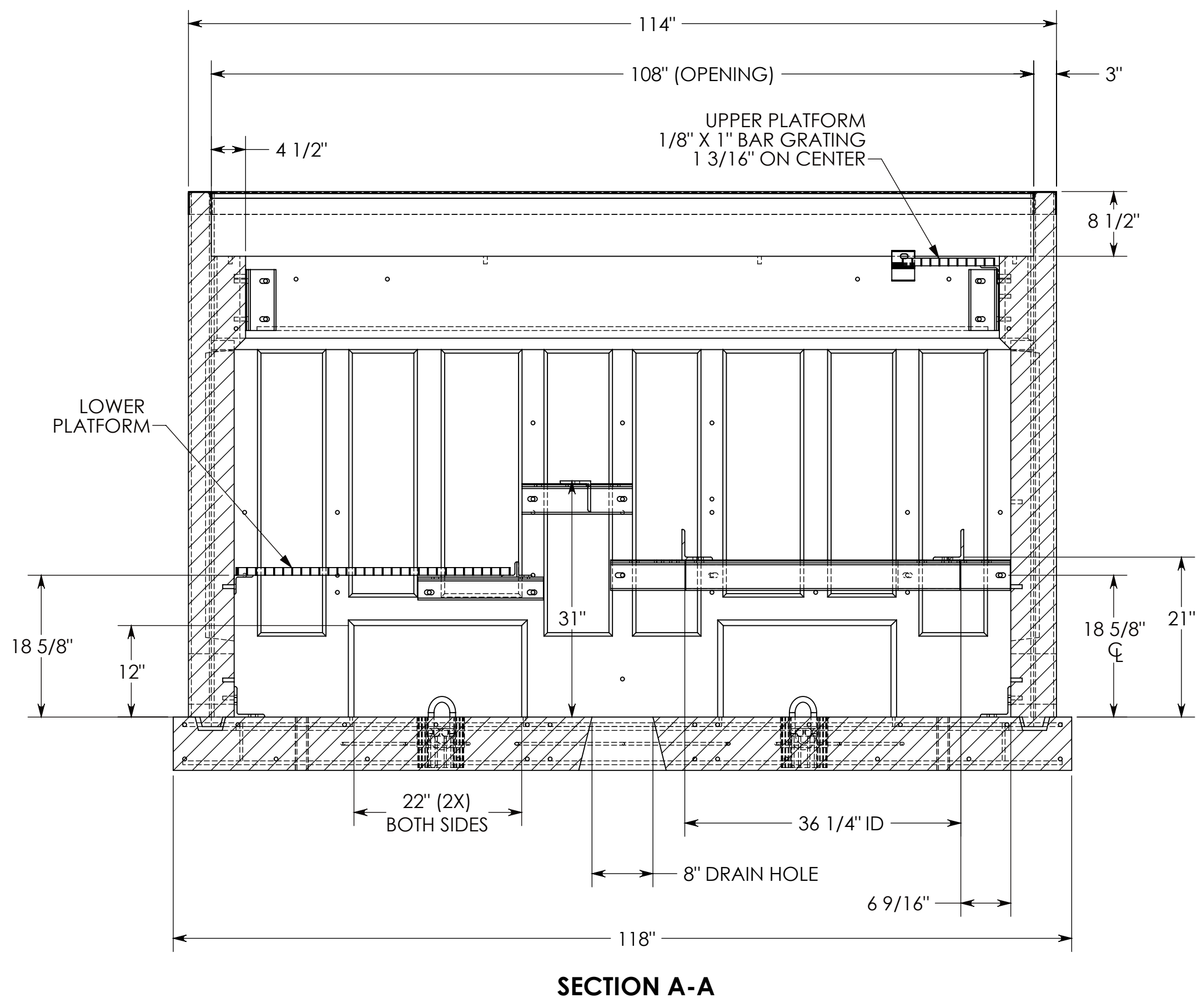
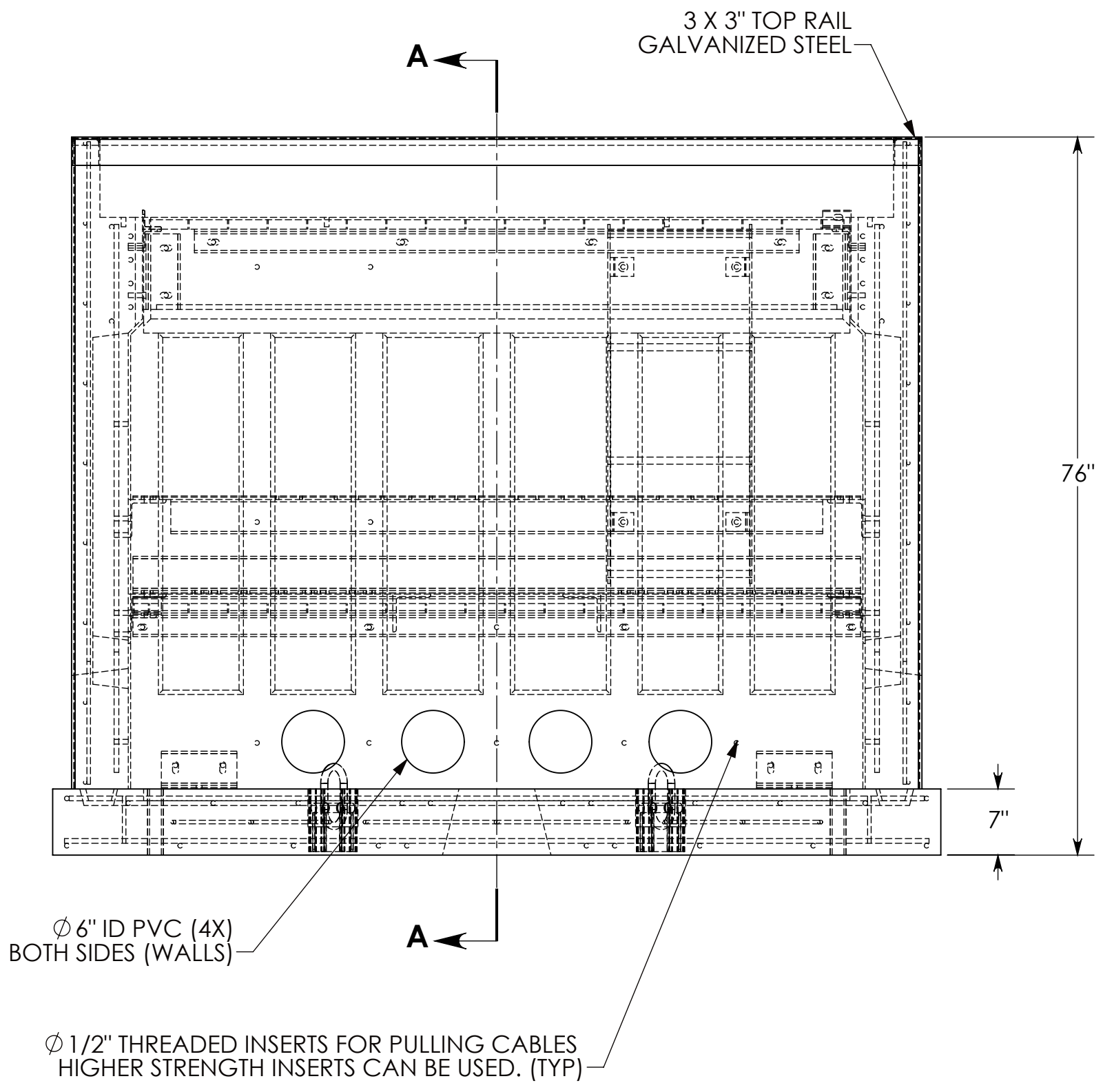
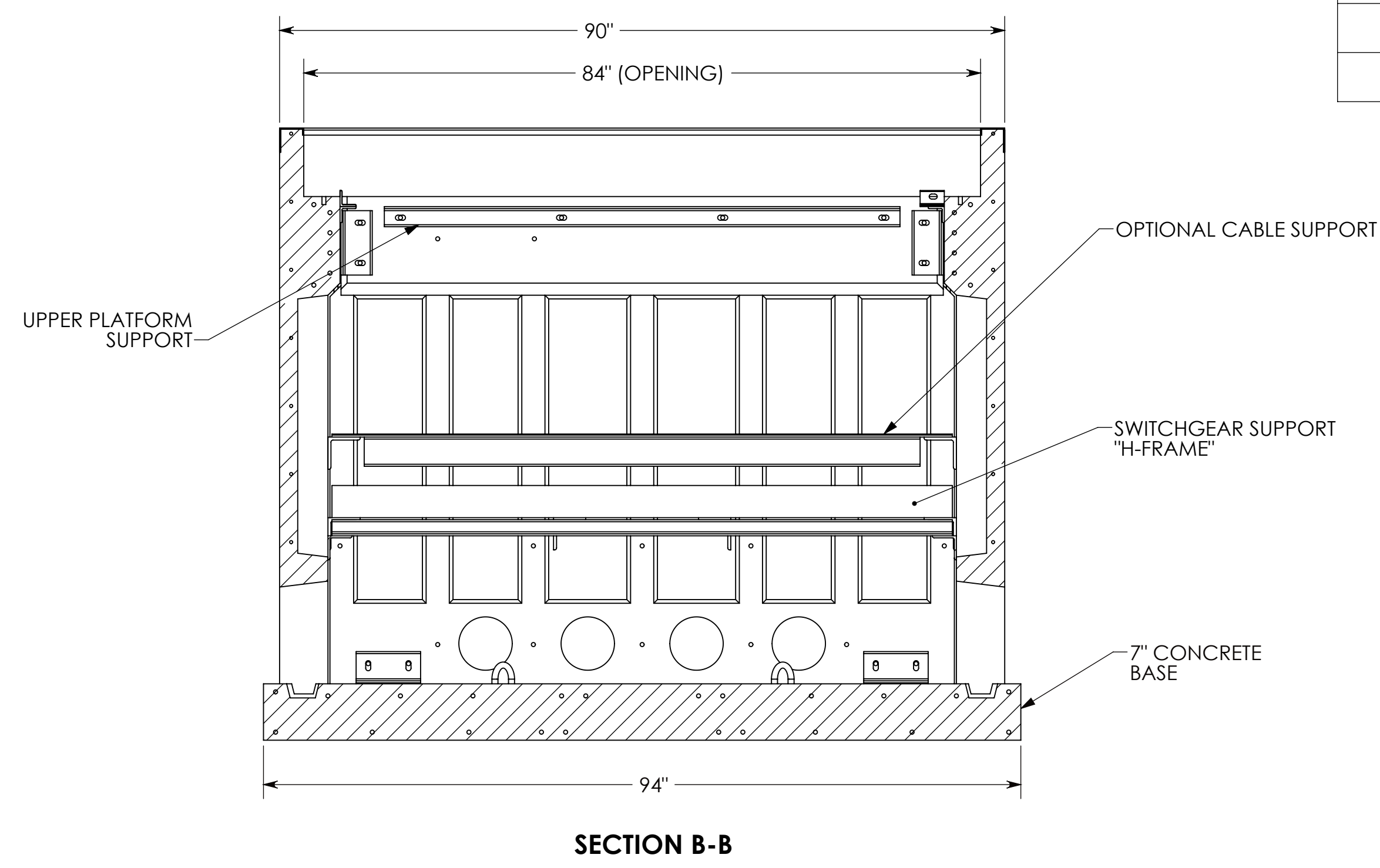
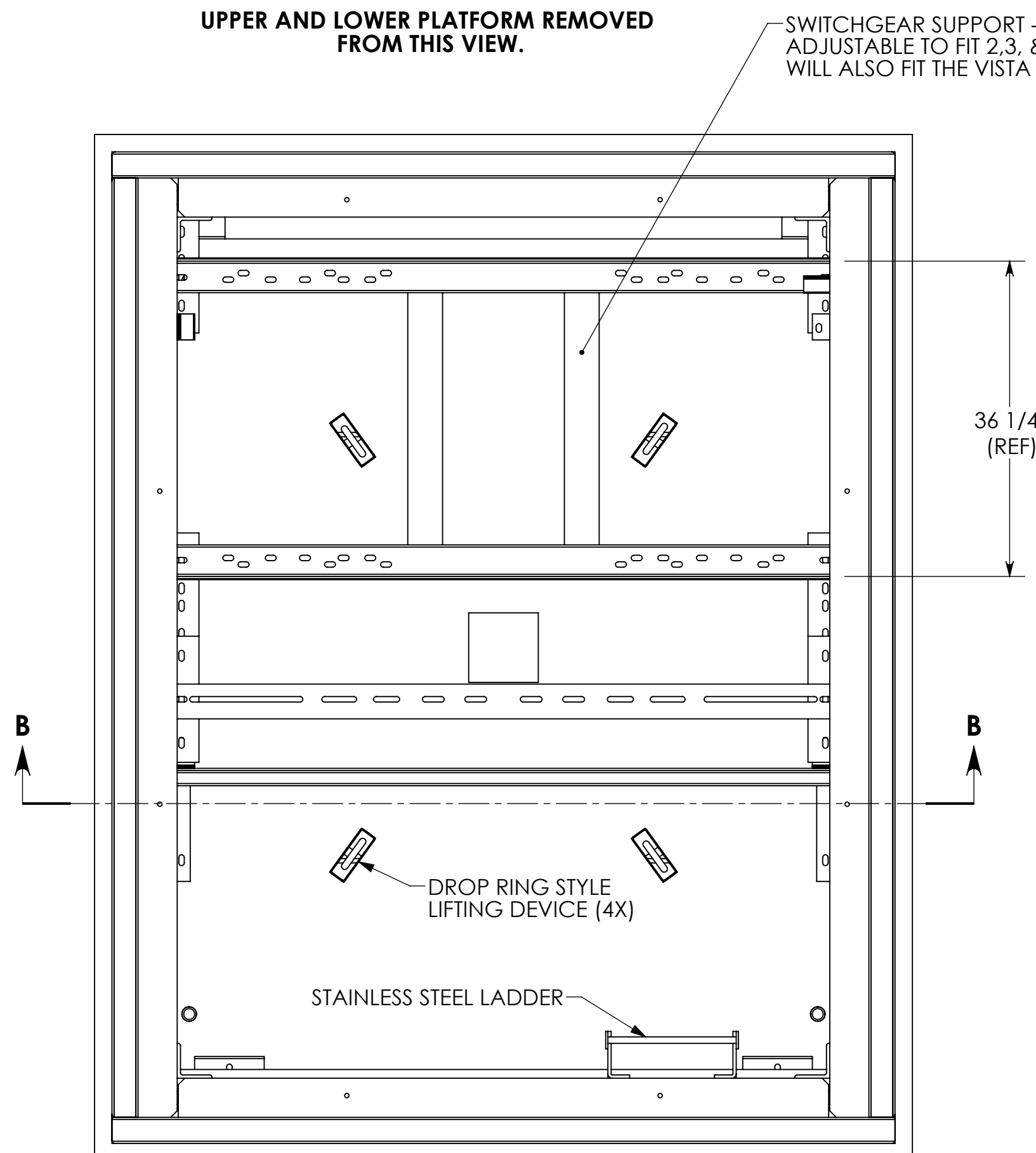


VAULT PACKAGE BILL OF MATERIALS			
ITEM NO.	PART NUMBER	DESCRIPTION	QTY.
1	FCV-90-114-76-N	VAULT WITH STAINLESS STEEL HARDWARE (HKIT-91-114-SS)	1
16	FCV-90-114-SA-LK	VAULT COVER SPRING-ASSISTED - LOCKING	1
17	FCV-90-114-FX	VAULT COVER - FIXED	1



- NOTES:
1. VAULT BASE AND WALLS MEET AASHTO H-20 HEAVY EQUIPMENT REQUIREMENT 32,000 LB. AXLE LOAD.
  2. DESIGNED PER S & C PULL BOX SPECIFICATIONS DATA SHEET 681-51. INCLUDING ALL OPTIONAL INTERIOR STEEL HARDWARE.
  3. ALL HARDWARE IS STAINLESS STEEL.
  4. VAULT COMES PRE-ASSEMBLED WITH COVERS REMOVED FOR EASY INSTALLATION OF YOUR SWITCHGEAR.
  5. UNIT MUST BE LIFTED FROM THE (4) CAST-IN DROP RING LIFTING DEVICES SHOWN.
  6. WEIGHT SHOWN IS THE ASSEMBLED VAULT WITHOUT COVER.

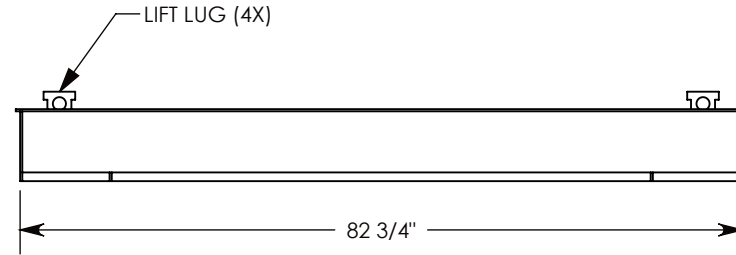
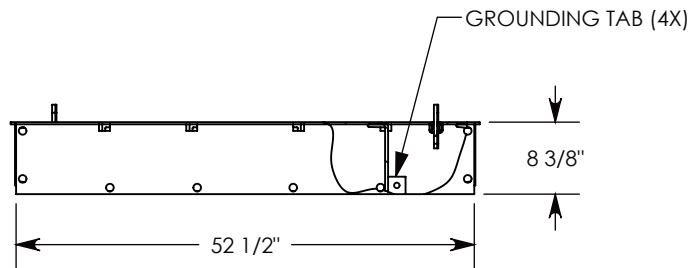
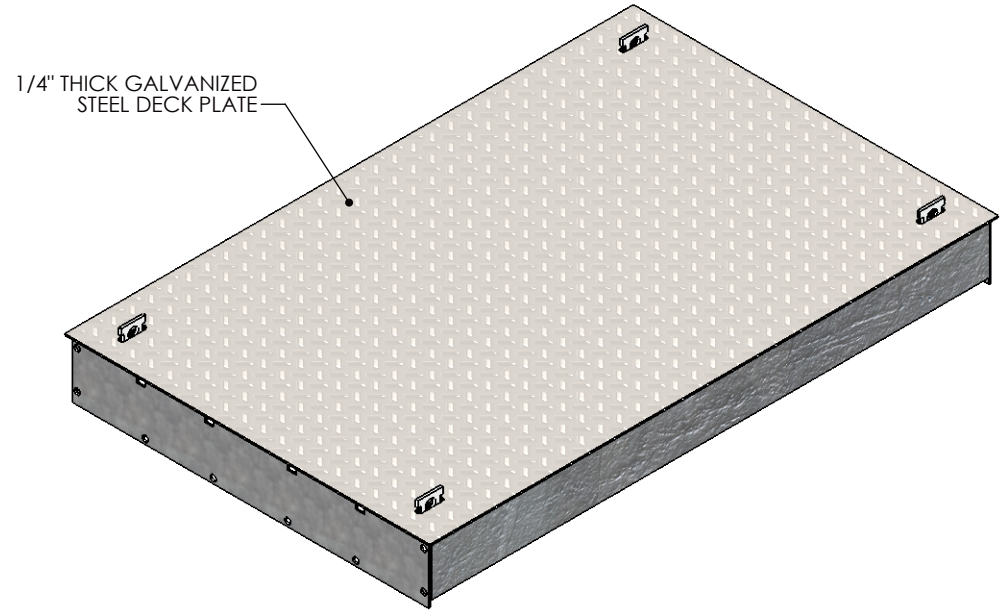
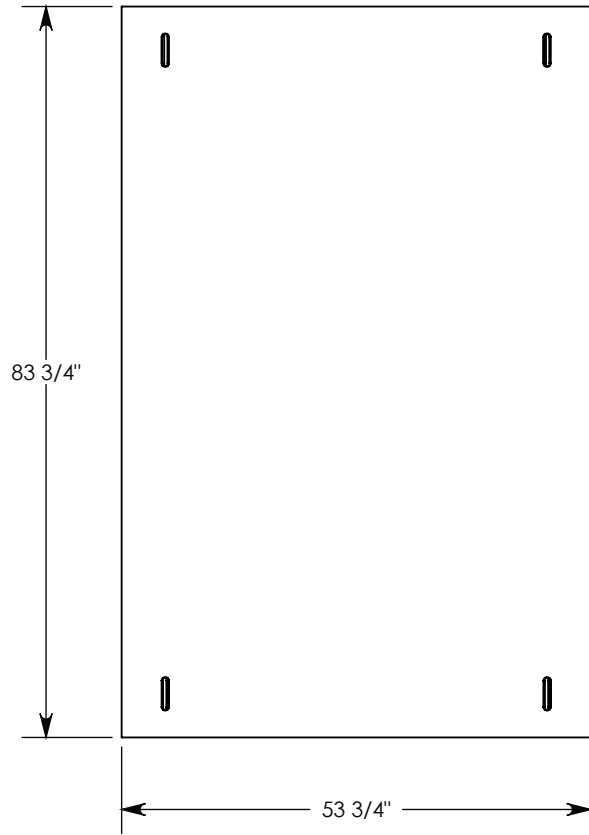
DRAWN BY: JESSE GUTTING  
 DATE: 12/12/2018  
 CHECKED BY: MIKE LASKA  
 FOR APPROVAL  
 WEIGHT: 16858 LBS



**Fibercrete®**

1010 NORTH STAR DRIVE  
 P.O. BOX 69  
 ZUMBROTA, MN 55992-0069  
 PHONE: (507) 732-4095 FAX: (507) 732-4094  
 EMAIL: INFO@CONCASTINC.COM

PROJECT NAME: FCV-90-114-76-N PRECAST CONCRETE VAULT	DRAWING NUMBER: FCV-90-114-76-N	REV. D
SCALE: 1:14	SHEET 1 OF 1	



**NOTE 1:** COVER FITS A 90-114 VAULT (OPENING SIZE = 84" X 108")

AASHTO H-20 RATED – 32,000 LB. SINGLE AXLE LOAD

**DRAWN BY:** ROBIN FLINT

**DATE:** 12/12/2018

**REVISION LEVEL:** 0

**WEIGHT:**

956 LBS.

**MATERIAL:**

WELDED GALV. STEEL



1010 NORTH STAR DRIVE  
P.O. BOX 69  
ZUMBROTA, MN 55992-0069

**DESCRIPTION:**

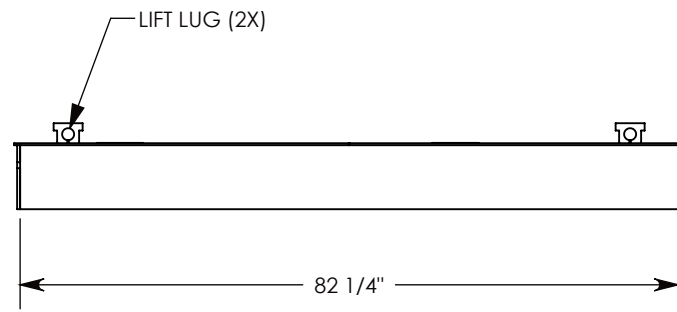
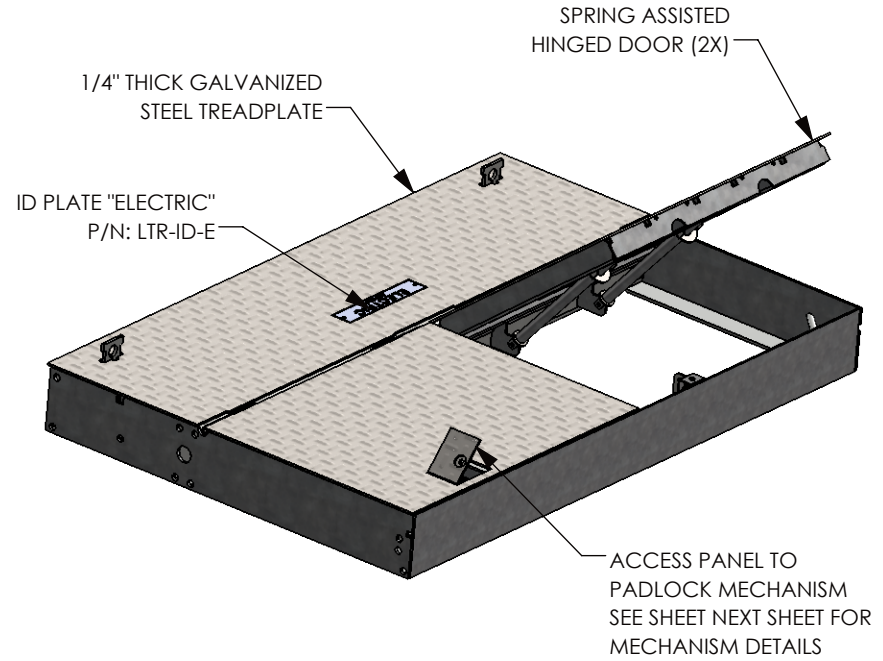
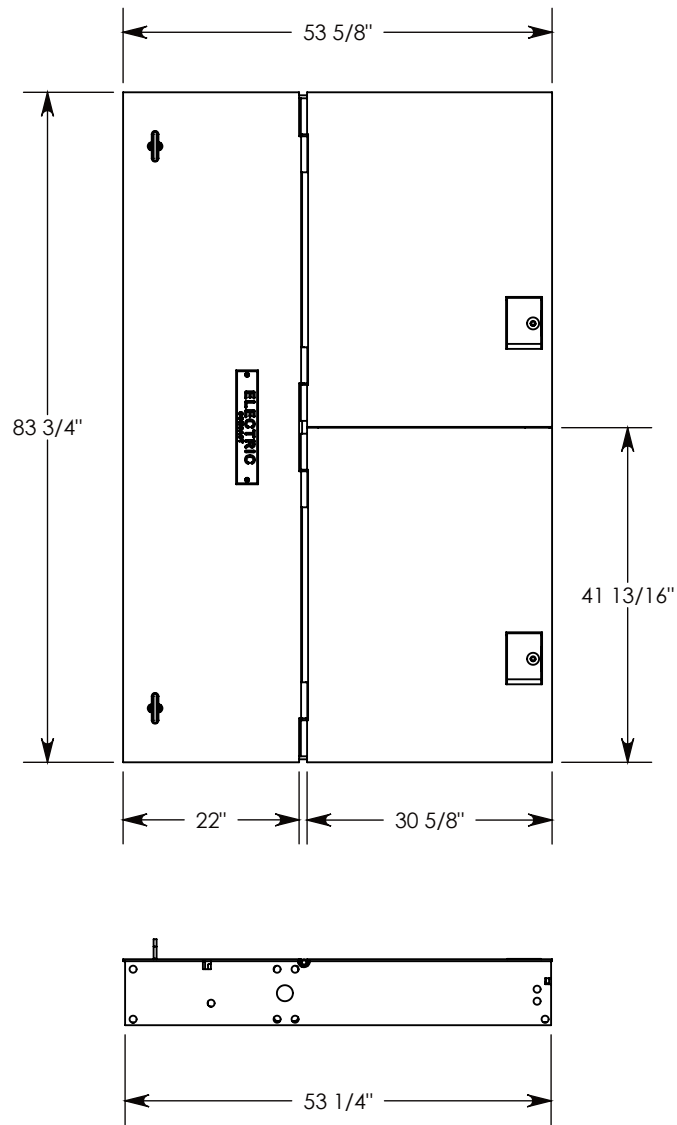
**VAULT COVER - FIXED**

DIMENSIONS ARE IN INCHES  
TOLERANCES:  
FRACTIONAL: ± 1/8"  
ANGULAR: ± 2°

CONTACT INFORMATION:  
EMAIL: INFO@CONCASTINC.COM  
PHONE: (507) 732-4095  
FAX: (507) 732-4094

**PART NUMBER:**

**FCV-90-114-FX**



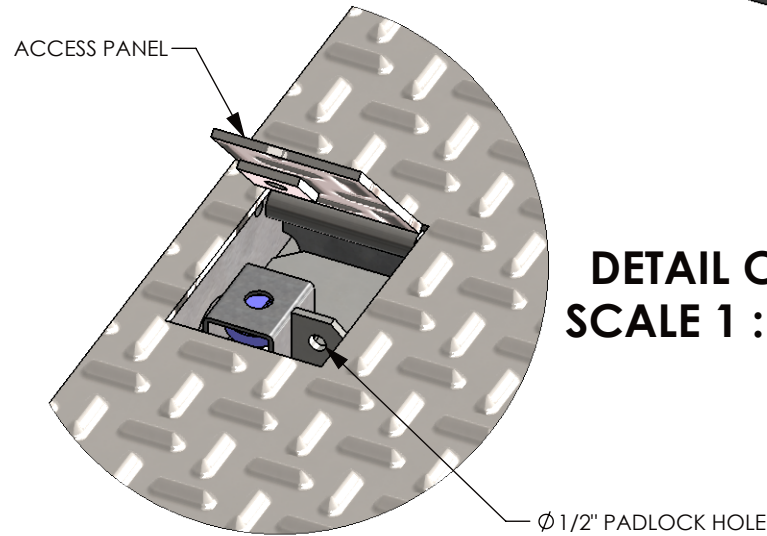
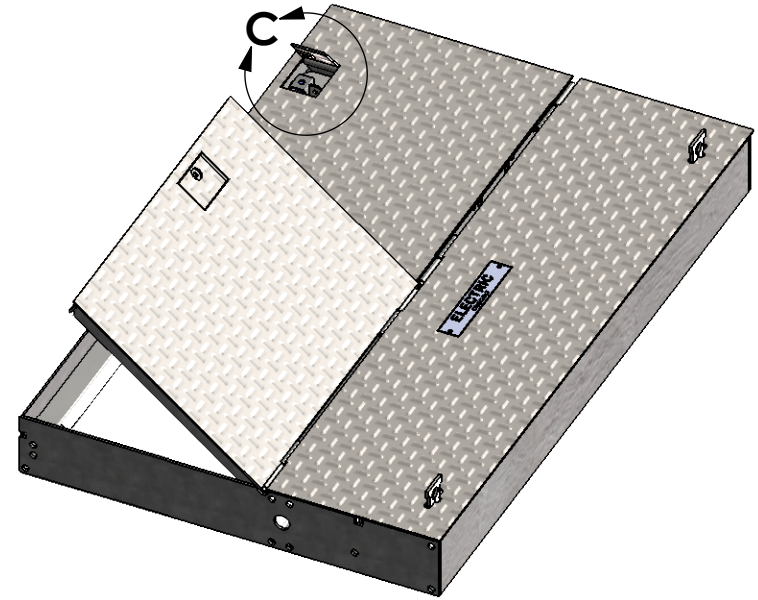
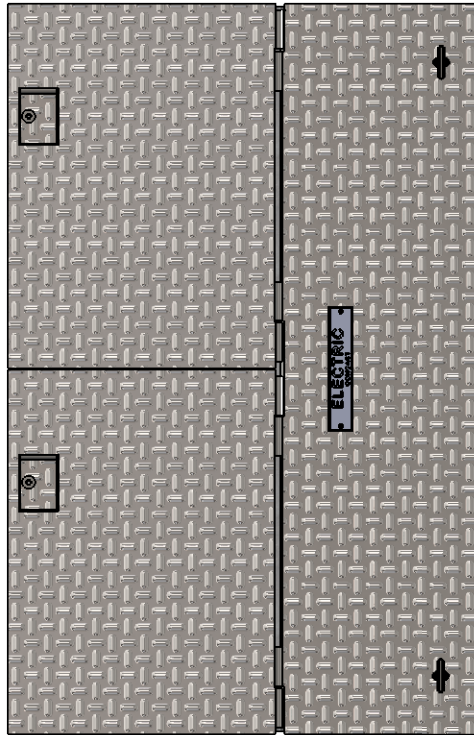
NOTE 1: COVER FITS A 90 - 114 VAULT (OPENING SIZE = 84" X 108")

AASHTO H-20 RATED – 32,000 LB. SINGLE AXLE LOAD

<b>DRAWN BY: JESSE GUTTING</b>	
<b>DATE: 12/12/2018</b>	<b>REVISION LEVEL: 0</b>
<b>WEIGHT: 1165 LBS.</b>	<b>MATERIAL: WELDED GALV. STEEL</b>

  
 1010 NORTH STAR DRIVE  
 P.O. BOX 69  
 ZUMBROTA, MN 55992-0069

<b>DESCRIPTION:</b>		
<b>VAULT SPRING-ASSISTED COVER</b>		
DIMENSIONS ARE IN INCHES	CONTACT INFORMATION:	
TOLERANCES:	EMAIL: INFO@CONCASTINC.COM	
FRACTIONAL: ± 1/8"	PHONE: (507) 732-4095	
ANGULAR: ± 2°	FAX: (507) 732-4094	
<b>PART NUMBER:</b>		
<b>FCV-90-114-SA-LK-OPEN</b>		



NOTE 1: COVER FITS A 90 - 114 VAULT (OPENING SIZE = 84" X 108")

AASHTO H-20 RATED – 32,000 LB. SINGLE AXLE LOAD

**DRAWN BY: JESSE GUTTING**

**DATE: 12/12/2018**

**REVISION LEVEL: 0**

**WEIGHT:**

**1165 LBS.**

**MATERIAL:**

**WELDED GALV. STEEL**

**CONCAST**  
 1010 NORTH STAR DRIVE  
 P.O. BOX 69  
 ZUMBROTA, MN 55992-0069

**DESCRIPTION:**

**VAULT SPRING-ASSISTED COVER**

DIMENSIONS ARE IN INCHES

TOLERANCES:  
 FRACTIONAL: ± 1/8"  
 ANGULAR: ± 2°

CONTACT INFORMATION:

EMAIL: INFO@CONCASTINC.COM  
 PHONE: (507) 732-4095  
 FAX: (507) 732-4094

SHEET 1 OF 5

**PART NUMBER:**

**FCV-90-114-SA-LK-OPEN**