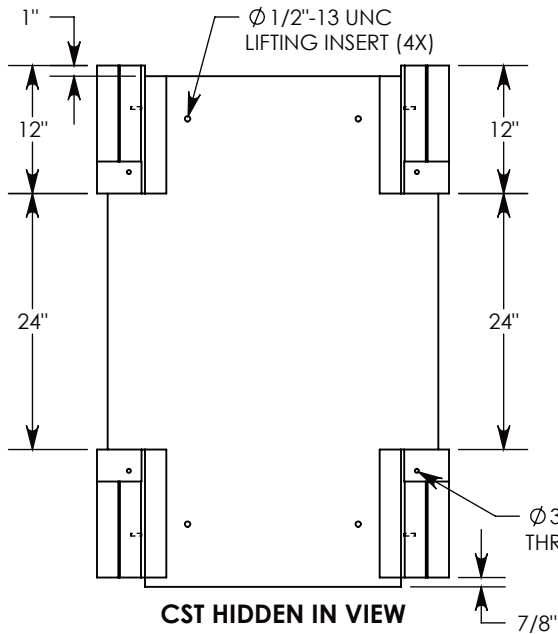


REV. A - RAL - 12/13/2017 - UPDATED THE COVER SUPPORT RAIL  
 REV. B - SIC - 7/25/2019 - UPDATED VIEWS AND DIMENSIONS; ADDED 1/4" CABLE CLIP INSERTS



3/8-16 UNC X 2.50" LG HEX HD BOLT, GRADE 8  
 P/N: HHB.38-2.5G8 QTY:4

3/8" STD WASHER - 1" OD  
 P/N: WSR.38-1 QTY:4

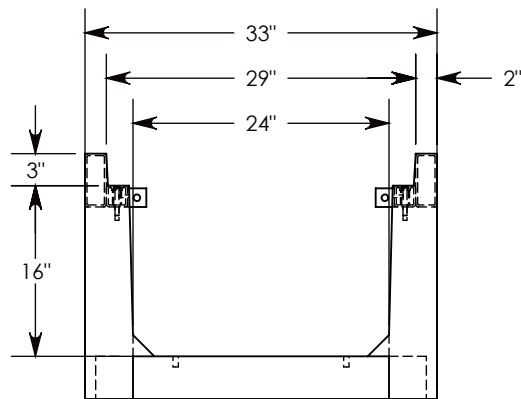
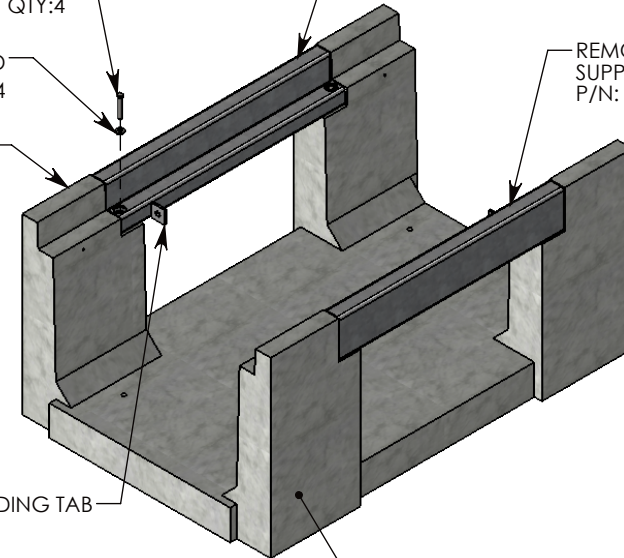
FRP TOP RAILS

GROUNDING TAB

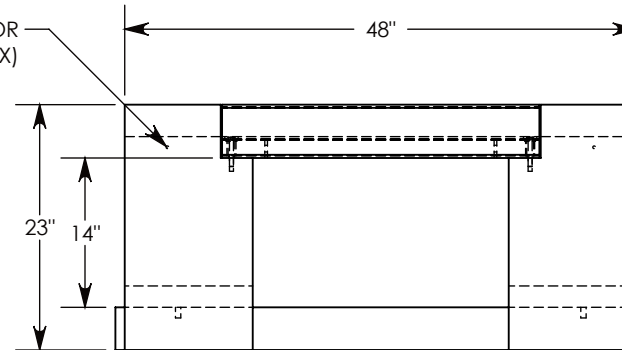
REMOVABLE COVER  
 SUPPORT RAIL  
 P/N: CST-24

REMOVABLE COVER  
 SUPPORT RAIL  
 P/N: CST-24

STEEL REINFORCED CONCRETE



Ø 1/4" INSERT FOR  
 CABLE CLIPS (4X)



AASHTO H-20 RATED - 32,000 LB. SINGLE AXLE LOAD

**DRAWN BY: ROSS LAGER**

**DATE: 7/25/2019**

**REVISION LEVEL: B**

**WEIGHT:**

**856 LBS.**

**MATERIAL:**

**NOTED**



**DESCRIPTION:**

**HEAVY TRAFFIC UNIVERSAL CHANNEL**

DIMENSIONS ARE IN INCHES  
 TOLERANCES:  
 FRACTIONAL: ± 1/8"  
 ANGULAR: ± 2°

CONTACT INFORMATION:  
 EMAIL: INFO@CONCASTINC.COM  
 PHONE: (507) 732-4095  
 FAX: (507) 732-4094

SHEET 1 OF 1

**PART NUMBER:**

**HTFU2416 (24X24)**