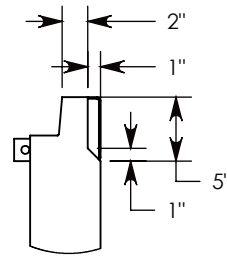
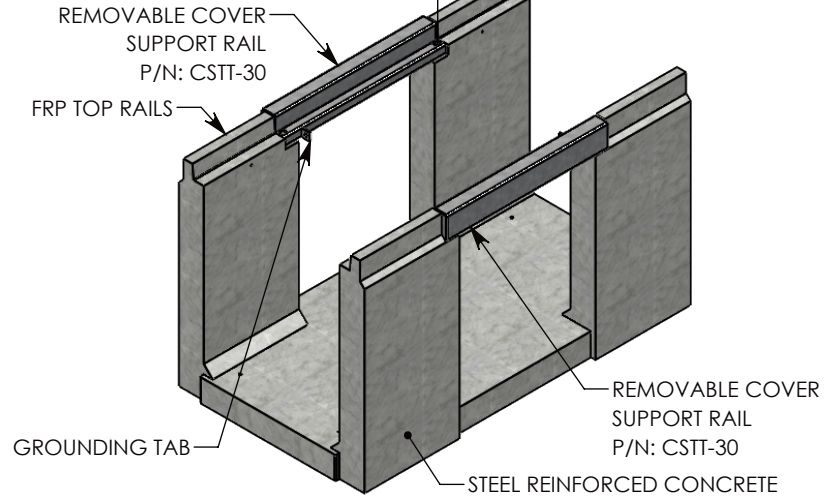
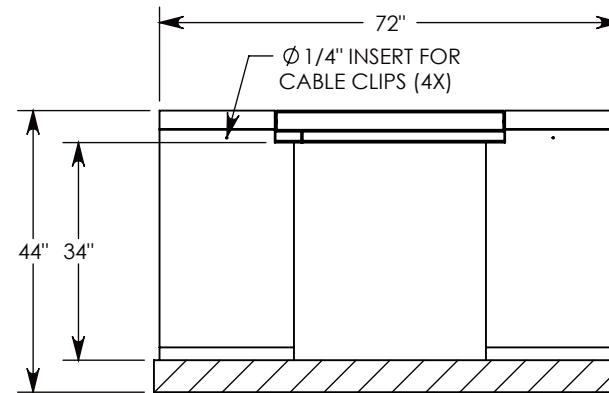
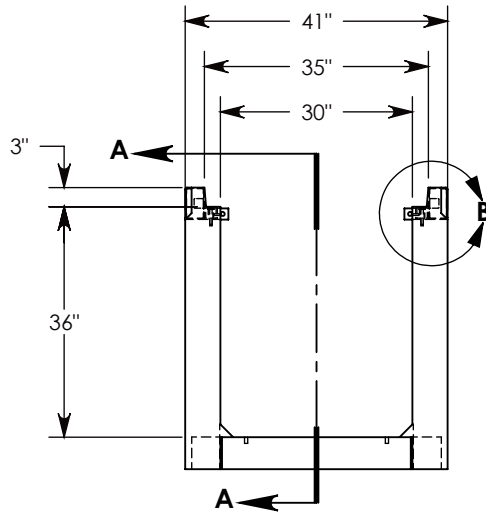


$3/8-16$ UNC X 2.50" LG HEX HD BOLT, GRADE 8 (4X)
 P/N: HHB.38-2.5G8

$3/8"$ STD WASHER - 1" OD (4X)
 P/N: WSR.38-1



DETAIL B
 SCALE 1 : 15
 HIDDEN LINES REMOVED



SECTION A-A

AASHTO H-20 RATED - 32,000 LB. SINGLE AXLE LOAD

DRAWN BY: SAMUEL CALLAHAN

CREATED DATE: 8/28/2019 **REVISION LEVEL: A**

SAVED DATE: 10/14/2020 **SAVED BY: scallahan**

WEIGHT: 2661 LBS. **MATERIAL: NOTED**


 1010 NORTH STAR DRIVE
 P.O. BOX 69
 ZUMBROTA, MN 55992-0069

DESCRIPTION:

HEAVY TRAFFIC UNIVERSAL CHANNEL

DIMENSIONS ARE IN INCHES
 TOLERANCES:
 FRACTIONAL: $\pm 1/8"$
 ANGULAR: $\pm 2^\circ$

CONTACT INFORMATION:
 EMAIL: INFO@CONCASTINC.COM
 PHONE: (507) 732-4095
 FAX: (507) 732-4094

SHEET 1 OF 1

PART NUMBER:

HTFU3036 (30X30)