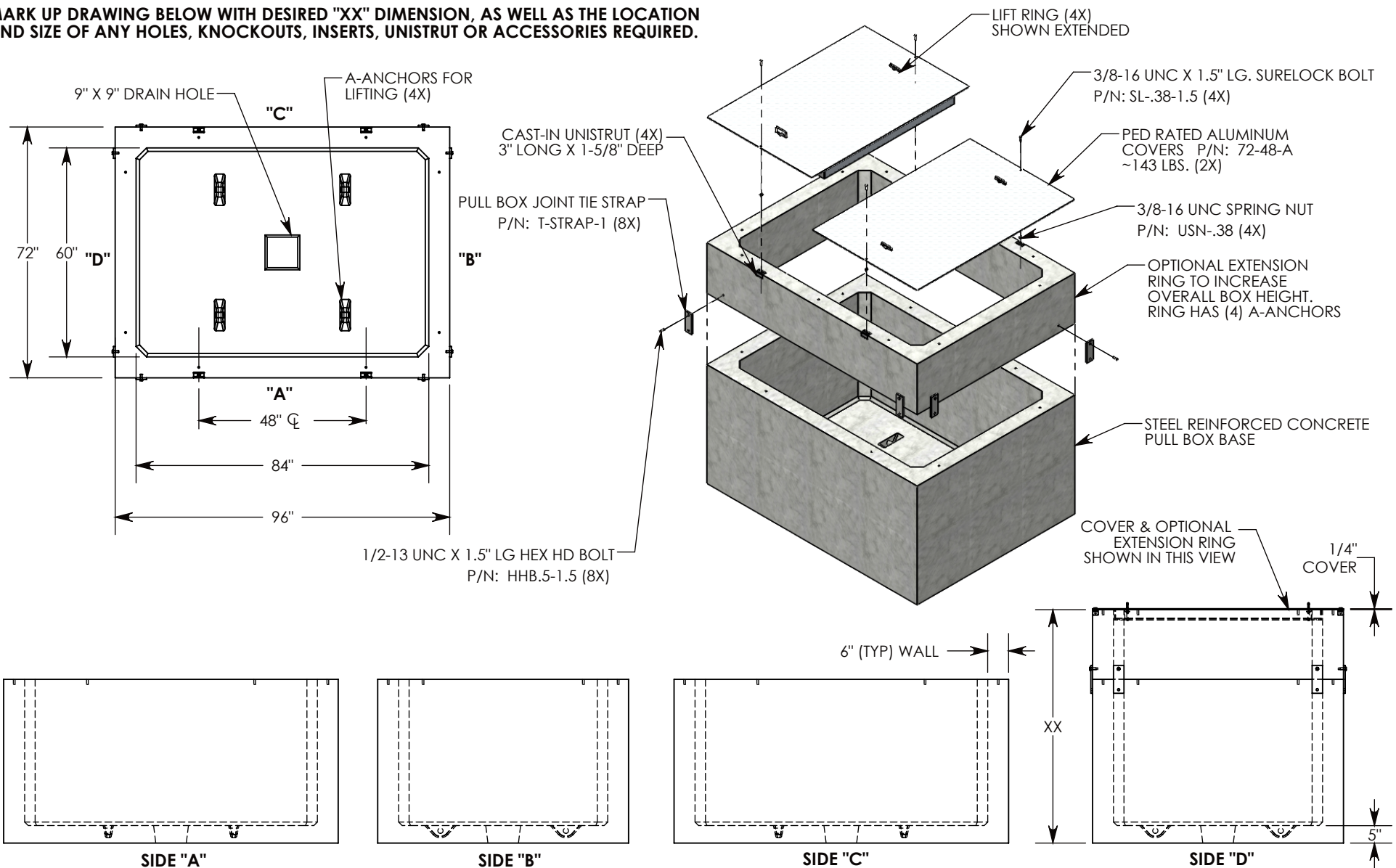


MARK UP DRAWING BELOW WITH DESIRED "XX" DIMENSION, AS WELL AS THE LOCATION AND SIZE OF ANY HOLES, KNOCKOUTS, INSERTS, UNISTRUT OR ACCESSORIES REQUIRED.



PEDESTRIAN RATED - 200 LB. PER SQ. FOOT

DRAWN BY: ROBIN FLINT

DATE: 10/2/2016

REVISION LEVEL: 0

WEIGHT:

- LBS. W/COVER

MATERIAL:

NOTED

CONCAST
1010 NORTH STAR DRIVE
P.O. BOX 69
ZUMBROTA, MN 55992-0069

DESCRIPTION:

CONCRETE PULL BOX W/ALUM. BD COVERS

DIMENSIONS ARE IN INCHES

TOLERANCES:
FRACTIONAL: $\pm 1/8"$
ANGULAR: $\pm 2^\circ$

CONTACT INFORMATION:
EMAIL: INFO@CONCASTINC.COM
PHONE: (507) 732-4095
FAX: (507) 732-4094

SHEET 1 OF 1

PART NUMBER:

PB-72-96-XX-ABDSL