

3/8-16 UNC X 1.5" LG PENTA HD BOLT
PTA.38-1.5 (2X) SEE NOTE 2

40-86-RSGBD
H20 HEAVY TRAFFIC RATED
GALV. STEEL BD COVER
~444 LBS.

LIFTING LUGS (2X)
SHOWN EXTENDED

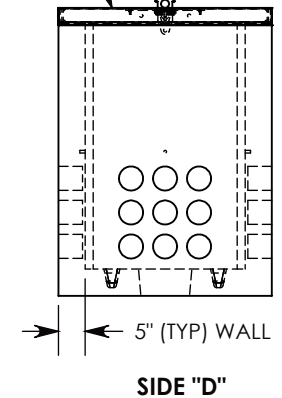
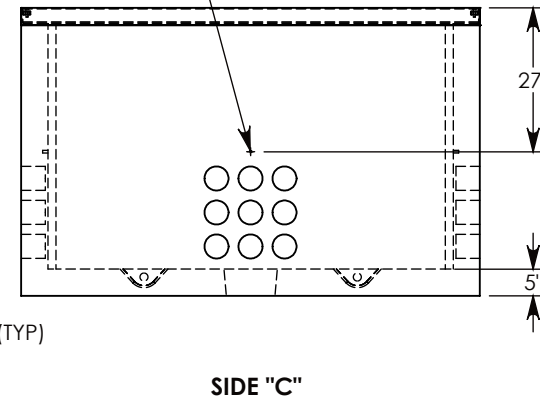
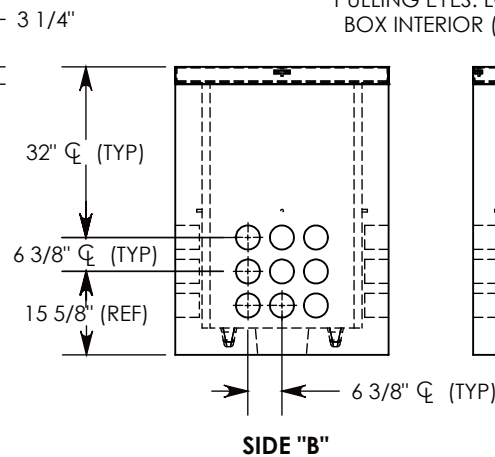
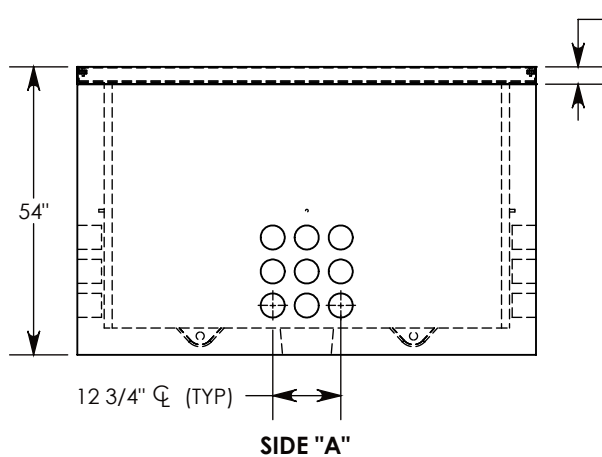
ALUM ID PLATE
"CONCAST"
P/N: LTR-ID

STEEL REINFORCED
CONCRETE PULL BOX
& CAST-IN STEEL BD FRAME
P/N: PB9-40-86-54-R

CON-DUCT TERMINATIONS ARE CAST
INTO BOX SIDEWALLS. 9 PER SIDE (4X)
THEY FIT UP TO 4" PVC PIPE. TO ACCESS
THE HOLES, BREAK THE PLASTIC SEAL.

Ø 1/2"-13 UNC INSERT (4X) FOR
PULLING EYES. LOCATED ON
BOX INTERIOR (1X PER SIDE)

COVER SHOWN IN THIS VIEW



NOTE 1: FOR PVC SIZES SMALLER THAN 4", USE CONCAST RC41 (REDUCING COUPLER)

NOTE 2: FOR ADDED SECURITY, REPLACE PENTAHEAD BOLTS WITH SURELOCK BOLTS & ORDER UNIT UNDER P/N: PB9-40-86-54-RSGBDSL

H-20 RATED - 32,000 LB. PER AXLE LOAD.

DRAWN BY: ROBIN FLINT

DATE: 12/26/2015

REVISION LEVEL: 0

WEIGHT:

6090 LBS. W/COVER

MATERIAL:

NOTED

CONCAST
1010 NORTH STAR DRIVE
P.O. BOX 69
ZUMBROTA, MN 55992-0069

DESCRIPTION:

PULL BOX W/BOLT-DOWN RSG COVERS

DIMENSIONS ARE IN INCHES

TOLERANCES:
FRACTIONAL: $\pm 1/8"$
ANGULAR: $\pm 2^\circ$

CONTACT INFORMATION:
EMAIL: INFO@CONCASTINC.COM
PHONE: (507) 732-4095
FAX: (507) 732-4094

SHEET 1 OF 1

PART NUMBER:

PB9-40-86-54-RSGBD