

A-ANCHORS FOR LIFTING (4X)

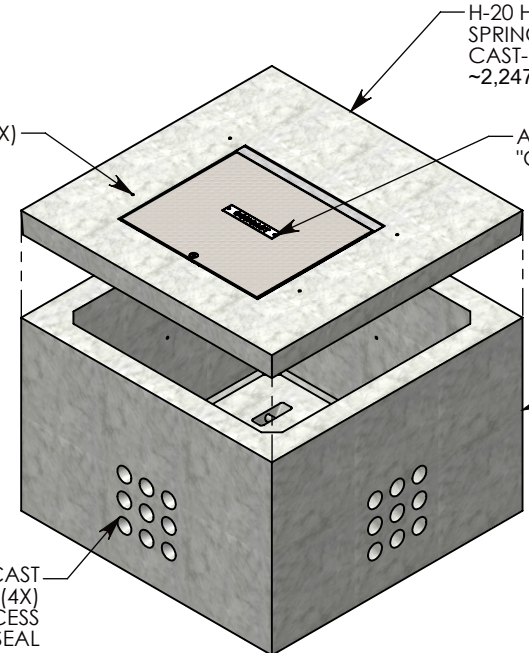
INSERTS FOR LIFTING (4X)

H-20 HEAVY TRAFFIC RATED SPRING ASSISTED GALV. STL. CAST-IN CONCRETE COVER ~2,247 LBS. P/N:72-72-SA

ALUMINUM ID PLATE "CONCAST" P/N: LTR-ID

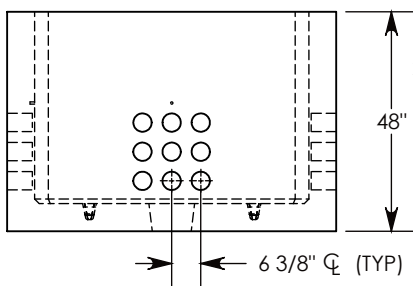
STEEL REINFORCED CONCRETE PULL BOX P/N: PB9-72-72-48 ~7807 LBS.

CON-DUCT TERMINATIONS ARE CAST INTO BOX SIDEWALLS. 9 PER SIDE (4X) THEY FIT UP TO 4" PVC PIPE. TO ACCESS THE HOLES, BREAK THE PLASTIC SEAL

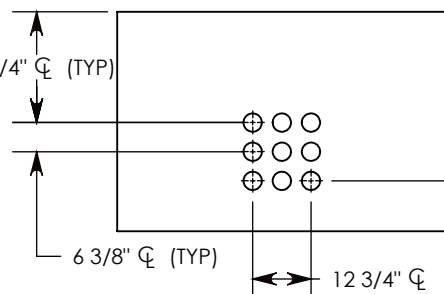


Ø-13 UNC INSERT (4X) FOR PULLING EYES. LOCATED ON BOX INTERIOR (1X PER SIDE)

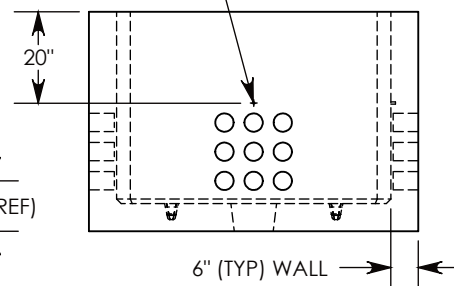
SPRING-ASSIST COVER SHOWN IN THIS VIEW



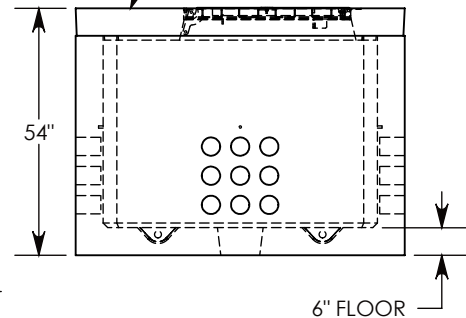
SIDE "A"



SIDE "B" (HLR)



SIDE "C"



SIDE "D"

NOTE 1: FOR PVC SIZES SMALLER THAN 4", USE CONCAST RC41 (REDUCING COUPLER).

H-20 RATED - 32,000 LB. PER AXLE LOAD.

| | |
|----------------------------|-------------------|
| DRAWN BY: ROBIN FLINT | |
| DATE: 1/15/2016 | REVISION LEVEL: 0 |
| WEIGHT: 10054 LBS. W/COVER | MATERIAL: NOTED |



1010 NORTH STAR DRIVE
P.O. BOX 69
ZUMBROTA, MN 55992-0069

| | | |
|--|--|--------------|
| DESCRIPTION: PULL BOX W/SPRING-ASSIST RSG COVER | | |
| DIMENSIONS ARE IN INCHES TOLERANCES: FRACTIONAL: ± 1/8" ANGULAR: ± 2° | CONTACT INFORMATION: EMAIL: INFO@CONCASTINC.COM PHONE: (507) 732-4095 FAX: (507) 732-4094 | SHEET 1 OF 1 |
| PART NUMBER: PB9-72-72-48-SA | | |