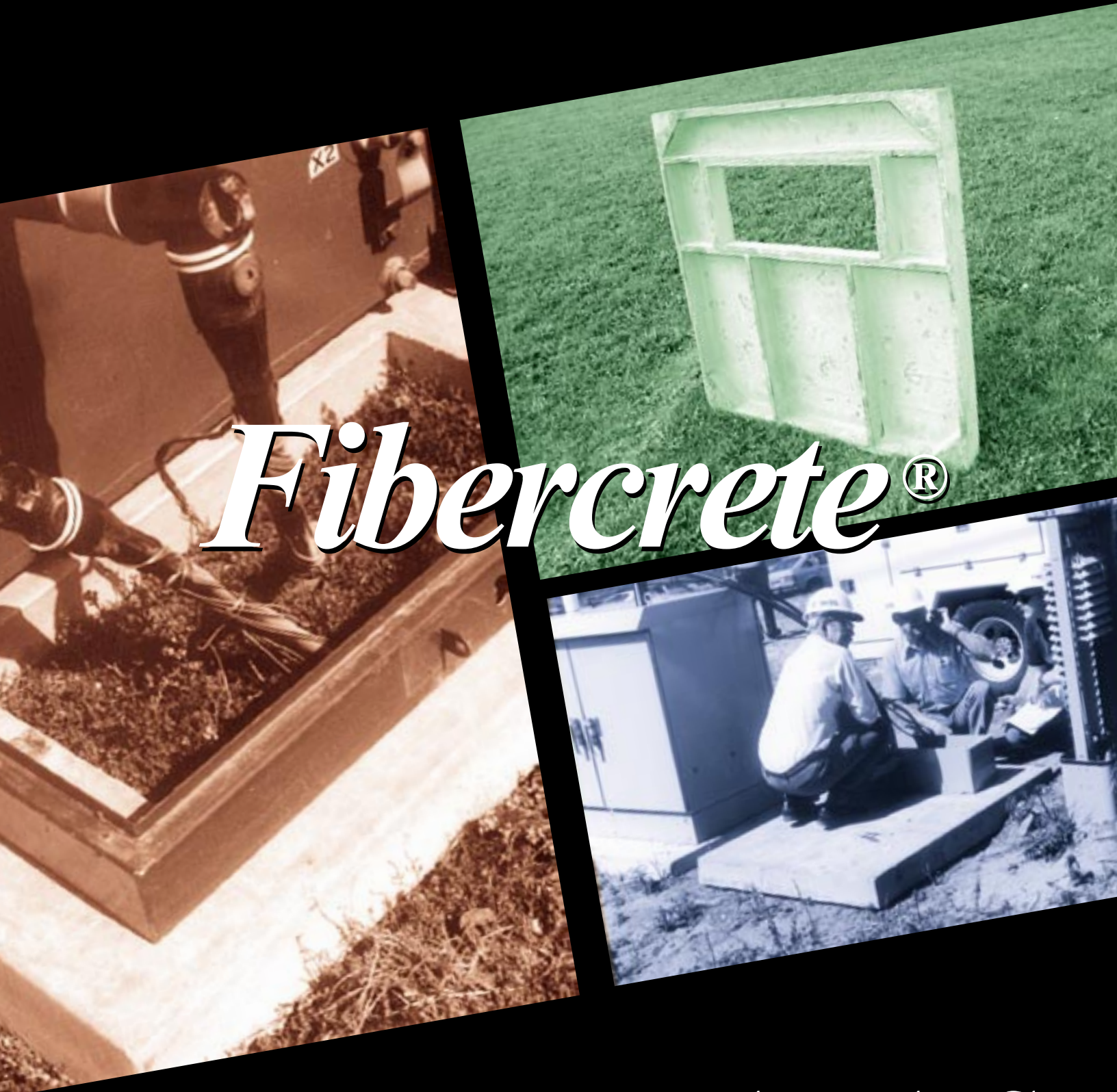


CONCRETE INC.

-PRECISELY ENGINEERED HIGH STRENGTH CONCRETE-



Fibercrete®

FLAT PADS



Concast Fibercrete® Flat Pads provide for a stable and attractive pad for any utility pad mount apparatus.

The Fibercrete® Flat Pad is precisely engineered with high strength, fiber and steel reinforced concrete. It's high strength/weight ratio yields an extra tough, lightweight unit that saves handling and shipping costs.



Low in place cost plus concrete's proven durability and pleasing appearance provide for a truly economical and attractive installation.

Concast, Inc. was founded in 1969 by Mr. Ben Tilsen, past owner and president. Ben is a concrete technologist known for his work in light weight aggregates and fiber reinforced concrete. He and Concast, Inc. hold patents on material and design in these fields. Concast is a member of the American Concrete Institute and the National Precast Concrete Association.

Overview 4

Sizes and Details 6

Transformer Sizes 7

Split Pads 8

Accessories 8

Specifications 9



REDUCE INSTALLATION COST WITH CONCAST FIBERCRETE® FLAT PADS

IN-PLACE COST IS LESS than site cast concrete, conventional precast concrete, plastic mortars, or fiberglass plastics.



BENEFITS:

- **HANDLING IS EASY.** A crew of two or three can install a Flat Pad without using hoisting equipment. Shipping costs are saved by its light weight construction.
- **HIGH STRENGTH MATERIAL.** Fibercrete® construction makes possible a 3/4" material thickness with high strength, providing safe, reliable support for electrical apparatus. Bottom rib design supports normal equipment loads without sinking.
- **LONG LIFE.** Concrete construction means long life plus fire and corrosion resistance. Inert mineral composition resists temperature extremes, rain, and UV degradation from the sun.
- **IMPACT RESISTANT.** Fibercrete® has about three times the impact resistance of ordinary concrete. In addition, the pads are designed with smooth rounded corners. The result is superior resistance to damage or abrasion from mowers, snow plows and vandals.
- **RODENT PROOF.** Tough Fibercrete® is resistant to gnawing animals.
- **FLAT AND RIGID.** Fibercrete® pads stay flat and rigid. They will not warp, providing a safe and secure installation. Fibercrete's® rigidity resists the "racking" and door jamming that occur if equipment enclosures do not rest on a level surface.
- **NATURAL APPEARANCE.** Smooth stone-like surfaces blend with natural environment.



FEATURES:

WAFFLE BOTTOM DESIGN. Fibercrete® Pads' unique waffle bottom design reduces weight, makes handling easier, and permits loose earth to fill bottom voids which level and stabilize the pad.

VARIABLE OPENING. Fibercrete® Flat Pads can be produced with window openings to fit your needs.



IDEAL USES:



SWITCHGEAR



TRANSFORMERS



TELECOMMUNICATION

DETAIL DRAWINGS PROVIDED.

Concast will provide detail drawings for engineering approval, and to assist construction supervisor in installation. Drawings will show overall flat pad size, opening size, weight, and any accessories required (ie. inserts, unistrut)

FROM ADVANCED CONCRETE TECHNOLOGY.

Advanced technology makes possible light, thin shell, precast concrete products which can replace more massive units in ordinary steel reinforced concrete. Drawing from more than 30 years of research and experience, Concast Inc. developed Fibercrete®, a proprietary blend of high strength concrete reinforcing with special fibers, using steel reinforcing where required.

QUALITY ASSURANCE AND RESEARCH.

Concast designs Fibercrete® products for specific applications, then tests them thoroughly for performance. The company molds and cures these products under precise controls at its Zumbrotta, MN factory. Research continues at Concast to develop and test new and improved specialized products for the electrical distribution industry.

GUIDE SPECIFICATIONS.

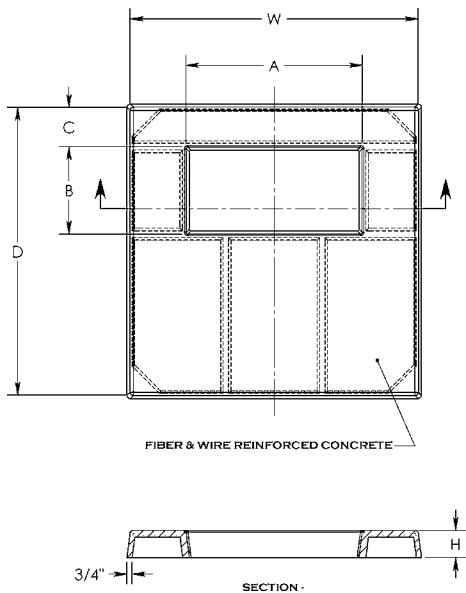
(Complete recommended specifications can be found at the end of the Flat Pad Catalog)

Flat Pads shall be Concast Fibercrete® or approved equal. It shall be composed of cement mortar, reinforced by alkali resistant fiber, and deformed high tensile wire.

CONCAST'S ROLE: TO SERVE YOU.

*For any special needs, contact your Concast Manufacturing representative, or call the factory direct.
Concast can make special sizes to meet your requirements.*

COMMON FLAT PAD SIZES



PART#	W	D	H	A	B	C	WEIGHT
FP-30-30-3	30	30	3	16	10	6	75 lbs.
FP-38-42-3.25	38	42	3.25	20	12	8	135 lbs.
FP-40-40-3.5	40	40	3.5	24.75	12	6	140 lbs.
FP-26-52-4	52	26	4	25	10	6	115 lbs.
FP-36-64-4	64	36	4	V	V	V	195 lbs.
FP-36-72-4	72	36	4	V	V	V	220 lbs.
FP-38-64-4	64	38	4	38	14	C	205 lbs.
FP-40-40-4	40	40	4	16	14	C	145 lbs.
FP-42-42-4	42	42	4	24.75	11.75	6	160 lbs.
FP-42-45-4	42	45	4	24	11	6	165 lbs.
FP-42-48-4	42	48	4	26	26	4	170 lbs.
FP-44-48-4	44	48	4	24	24	8	175 lbs.
FP-46-46-4	46	46	4	28	12	6.5	180 lbs.
FP-48-48-4	48	48	4	27	12	7.5	190 lbs.
FP-48-54-4	54	48	4	24	11.5	6	220 lbs.
FP-65-72-4	72	65	4	48	15.25	6	520 lbs.
FP-58-70-5	70	58	5	45	15	12	510 lbs.
FP-60-84-5	84	60	5	46.5	13.5	6	630 lbs.
FP-72-84-5	84	72	5	50.5	18.5	10.5	750 lbs.
FP-83-88-5	88	83	5	V	V	V	915 lbs.
FP-83-94-5	94	83	5	V	V	V	975 lbs.
FP-92-96-8	96	92	8	V	V	V	1720 lbs.

Opening Sizes: Standard cable openings are listed. If other opening sizes are required, specify when ordering.

Waffle Bottom: Typical flat pads have waffled bottom design to reduce weight for ease in handling. The waffle design also aids in leveling of pad.

Solid Bottom: Any flat pad can be ordered with a solid bottom. For part#, add a "SB". Ex: FP-48-48-4SB

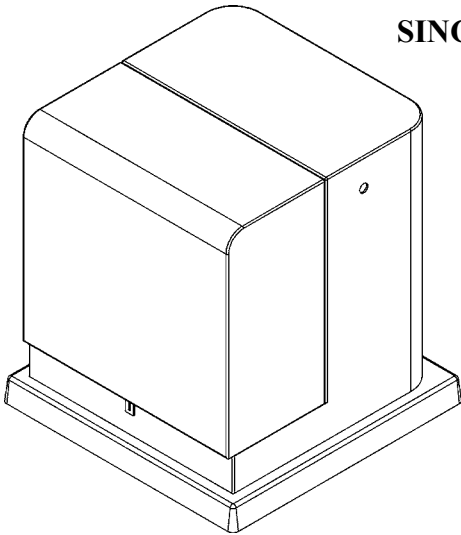
Split Pad: Our complete line of flat pads can be ordered as a split pad for easy pad replacement. See page 8.

Cast in Hardware: At customers request, any flat pad can be equipped with cast in hardware. See page 8.

V= Opening size varies (specify when ordering)

Sizes above are standard, for additional sizes please contact your local representative.

SINGLE PHASE TRANSFORMERS

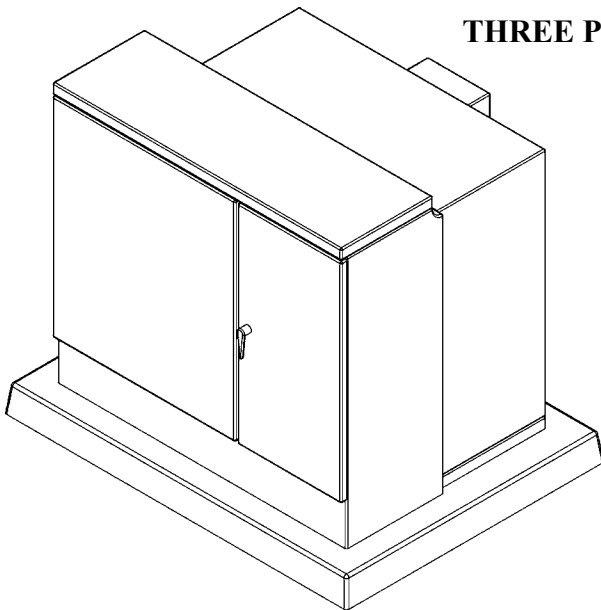


Single phase transformer flat pads are light weight and can be easily handled by two people.

CONCAST FLAT PAD	OPENING SIZE
FP-30-30-3	10 X 16
FP-38-42-3.25	20 X 12
FP-40-40-3.5	12 X 24 3/4
FP-40-40-4	14 X 16
FP-42-42-4	11 3/4 X 24 3/4
FP-42-45-4	24 X 11
FP-42-48-4	26 X 26
FP-44-48-4	24 X 24
FP-46-46-4	12 X 28
FP-48-48-4	12 X 27
FP-48-54-4	11 1/2 X 24

STANDARD OPENING SIZE SHOWN, OTHERS AVAILABLE.

THREE PHASE TRANSFORMERS



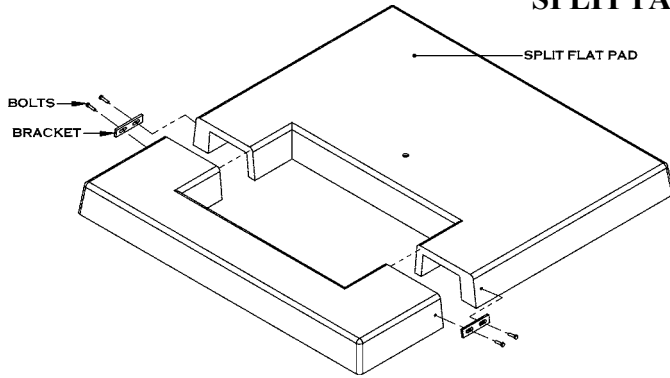
Three phase transformer flat pads are designed to accommodate excessive weight of oil tanks.

CONCAST FLAT PAD	OPENING SIZE
FP-65-72-4	15 1/4 X 48
FP-58-70-5	15 X 45
FP-60-84-5	13 1/2 X 46 1/2
FP-72-84-5	18 1/2 X 50 1/2
FP-83-88-5	VARIES
FP-83-94-5	VARIES
FP-92-96-8	VARIES

STANDARD OPENING SIZE SHOWN, OTHERS AVAILABLE.

Above are lists of our most common flat pad sizes, for additional sizes please contact your local Concast Representative. For a list of Concast Representatives in your area please visit our website at: www.concastinc.com/rep.htm

SPLIT PADS

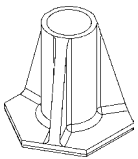


Split pads are ideal for instances where an existing pad is damaged and needs to be replaced. Our split pad design comes in two pieces with connecting hardware as shown. Any size flat pad can be ordered as a split pad.

Replacement procedure:

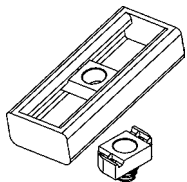
- Without cable disconnect lift equipment from existing pad.
- Cut out existing pad.
- Slide new Fibercrete® Split Pad into place and bolt together using hardware provided.
- Reattach equipment to new pad.

CAST-IN HARDWARE



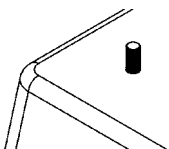
THREADED INSERTS

Threaded inserts can be cast in top of flat pad for equipment mounting and/or lifting. Insert sizes range from 1/4" - 1". Standard inserts are lead, but stainless steel and plastic are available. Location to customer spec.



UNISTRUT

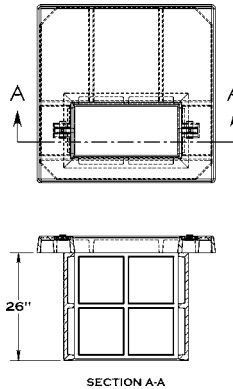
Unistrut with spring nut inserts are typically used for equipment bolt down. The spring nut slides within the unistrut for added mounting flexibility. Location to customer spec.



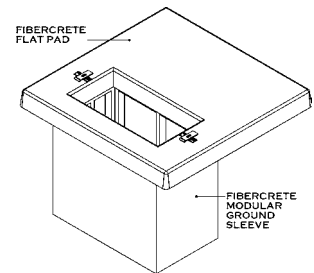
THREADED STUDS

Threaded studs are similar to inserts in that they are used for mounting equipment. A raised stud is cast into the flat pad to customers desired height and location.

FIBERCRETE® MODULAR GROUND SLEEVES



For some flat pad installations a Fibercrete® Modular Ground Sleeve can be used to give more cable training room. A small hole is excavated for the ground sleeve and the flat pad is placed on top. See our Modular Ground Sleeves Catalog for more information.

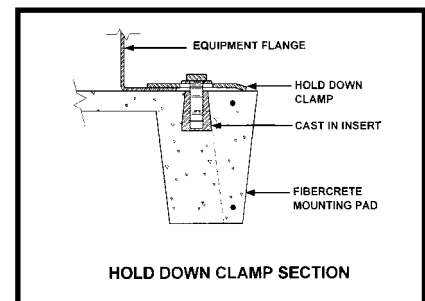
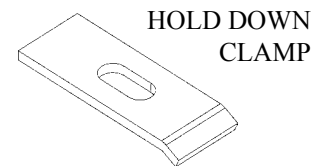


MOUNTING HARDWARE

Mounting hardware can be supplied with any flat pad per request. Some flat pads come standard with hardware already attached. All mounting hardware is standard Yellow Zinc plated (other finishes available).

Hold Down Clamp:

- Includes bolt.
- Used with unistrut or threaded insert.



HOLD DOWN CLAMP SECTION

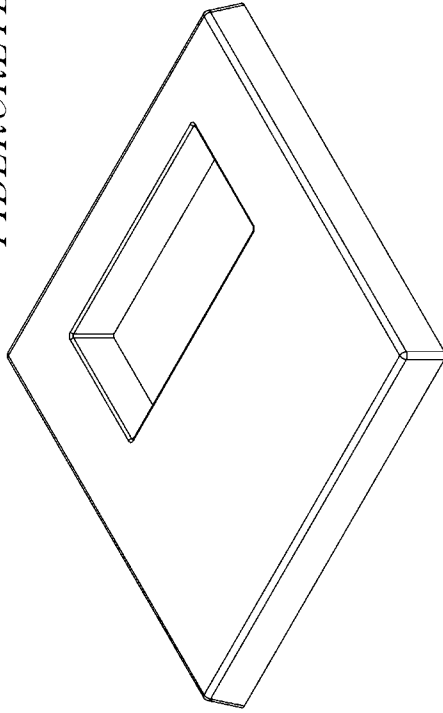
SPECIFICATIONS FOR FLAT PADS**1. GENERAL**

- 1-A.** The pad shall be composed of cement mortar reinforced by alkali resistant glass fibers, manufactured by Concast incorporating a minimum of 4 percent volume A.R. glass fibers.
- 1-B.** The pad shall be constructed with internal ribs and they shall extend the entire depth of the flat pad to ensure full support of the top surface of pad.
- 1-C.** The pad shall be of waffle bottom design to permit loose earth to fill bottom voids which level and stabilize the pad.
- 1-D.** The pad shall have a rigid, flat, and stable top surface.
- 1-E.** If required all pads will be manufactured with equipment bolt down accommodations.
- 1-F.** The pad must not warp, support flame, rust, or be UV degradable.
- 1-G.** The finished pad shall not sustain combustion.
- 1-H.** The pad must not be affected by asphalt, road salts, fertilizers, transformer oil, other common chemicals, weather, sunlight or other normal service conditions that it might be exposed to.
- 1-I.** Freezing - The pad shall be designed and constructed so that it and any hardware used will not trap or hold water, and will be able to withstand repeated freeze thaw cycles.
- 1-J.** Color - The color used in manufacture of flat pad shall be natural concrete gray.
- 1-K.** Temperature Limits - The pad shall be capable, with equipment installed, of withstanding temperature variations of -40 degrees C to +65 degrees C without cracking, splitting, or deforming.

2. DRAWINGS

- 2-A.** Drawings must be made available upon request for engineering approval and field installation and identification.
- 2-B.** Drawings will be in AutoCad format or equal and can be mailed, faxed, or emailed upon customer's request.

FIBERCRETE®



PLEASE COPY THIS PAGE AND FILL IN DIMENSIONS OF CUSTOM SIZE FLAT PAD NEEDED.

W" ___ D" ___ A" ___ B" ___ C" ___ H" ___

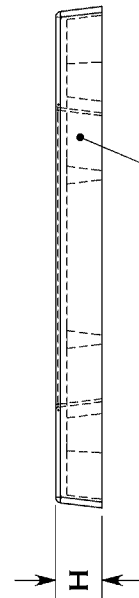
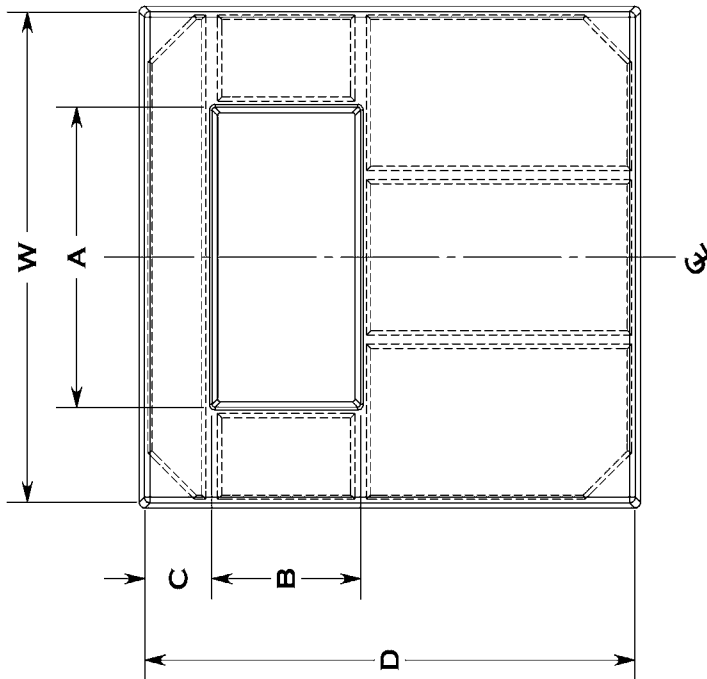
PLEASE NOTE THAT TYPICALLY THE OPENING OR THROAT IS CENTERED ON THE "W" DIMENSION. IF AN OFFSET OPENING IS REQUIRED SPECIFY BY ADDING A DIMENSION OFF THE EDGE. IF MULTIPLE OPENINGS ARE NEEDED DRAW IN LOCATIONS ON TOP VIEW OF DRAWING.

SKETCH IN ANY NEEDED CAST-IN HARDWARE.

___ - CHECK IF SOLID BOTTOM IS REQUIRED

___ - REQUIRED QTY.

COPY THIS PAGE FOR CUSTOM SIZE FLAT PADS...



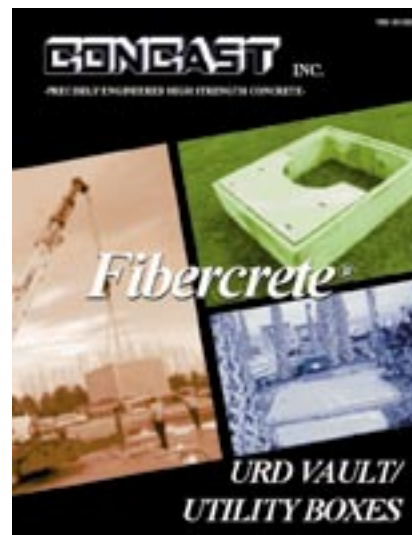
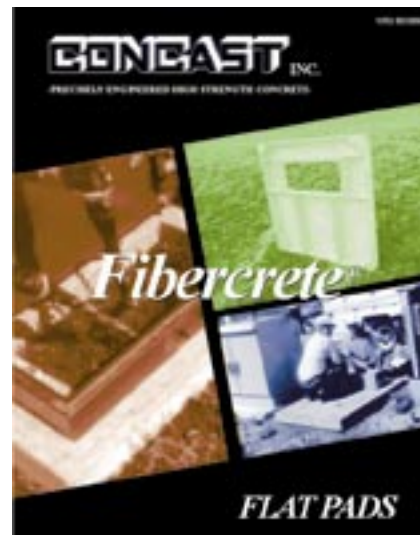
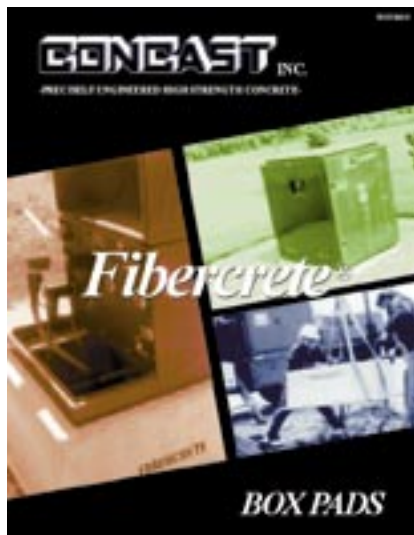
FIBER & WIRE REINFORCED CONCRETE

DESCRIPTION: FIBERCRETE FLAT PAD	
DIMENSIONS ARE IN INCHES TOLERANCES: FRACTIONAL: ± 1/8" ANGULAR: ± 2°	CONTACT INFORMATION: EMAIL: INFO@CONCASTINC.COM PHONE: (507) 732-4095 FAX: (507) 732-4094
PART NUMBER: FP- ___ - ___ - ___	SHEET 1 OF 1

CONCAST INC.
 1010 NORTH STAR DRIVE
 P.O. BOX 69
 ZUMBROTA, MN 55992-0069

DRAWN BY: MIKE LASKA
DATE: 3/18/04
WEIGHT: --- LBS.

OUR COMPLETE LINE OF CATALOGS



CONCAST, Inc.
1010 North Star Drive
P.O. Box 69 • Zumbrota, MN 55992-0069
Phone: (507) 732-4095 • Fax: (507) 732-4094
email: info@concastinc.com
web: www.concastinc.com