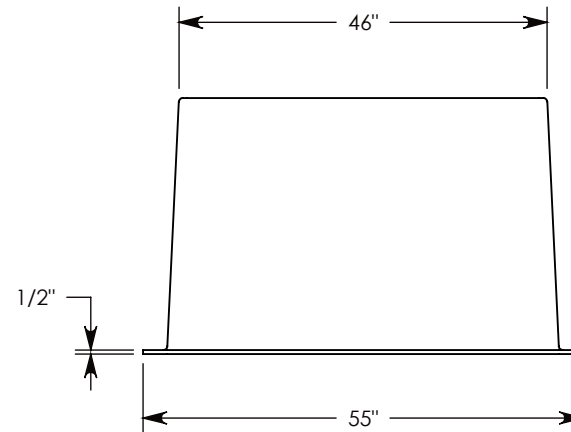
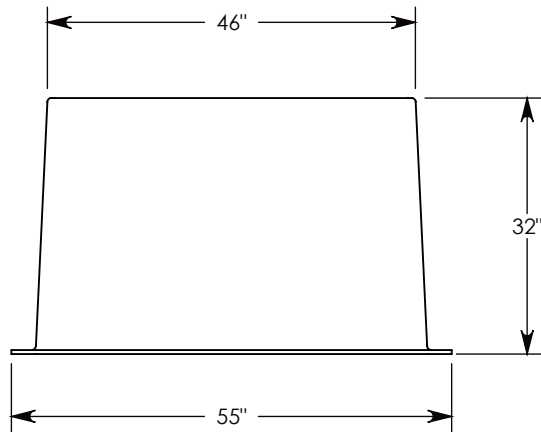
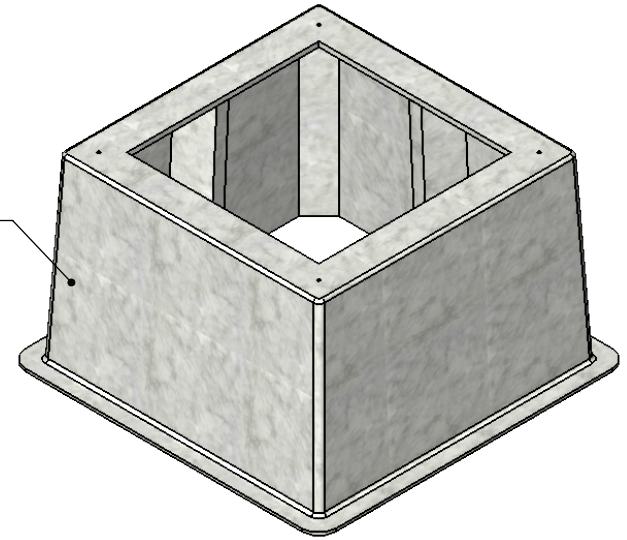


FIBER REINFORCED CONCRETE



**NOTE 1:** NO MINIMUM OPENING

**NOTE 2:** Ø 1/2"-13 UNC LIFTING INSERTS WILL BE CAST INTO BOX PAD

IF SPECIFIC INSERTS OR MOUNTING HARDWARE ARE REQUIRED, PLEASE SPECIFY WHEN ORDERING

**NOTE 3:** PART NUMBER IS BASED ON OPENING SIZE IE: THE LARGEST OPENING SIZE IS P/N: FC-46-46-32-3434

<b>DRAWN BY: JESSE GUTTING</b>		 1010 NORTH STAR DRIVE P.O. BOX 69 ZUMBROTA, MN 55992-0069	<b>DESCRIPTION:</b>	
<b>DATE: 3/9/2018</b>	<b>REVISION LEVEL: 0</b>		<b>FIBERCRETE BOX PAD</b>	
<b>WEIGHT:</b>	<b>MATERIAL:</b>		DIMENSIONS ARE IN INCHES TOLERANCES: FRACTIONAL: ± 1/8" ANGULAR: ± 2°	CONTACT INFORMATION: EMAIL: INFO@CONCASTINC.COM PHONE: (507) 732-4095 FAX: (507) 732-4094
<b>427 LBS.</b>	<b>FIBERCRETE FC</b>	<b>PART NUMBER:</b>		<b>FC-46-46-32-LLWW(X)</b>