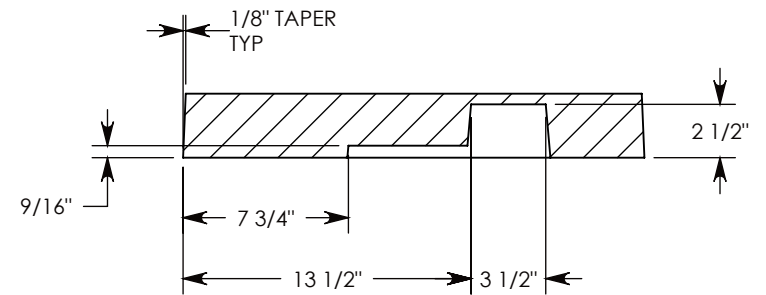
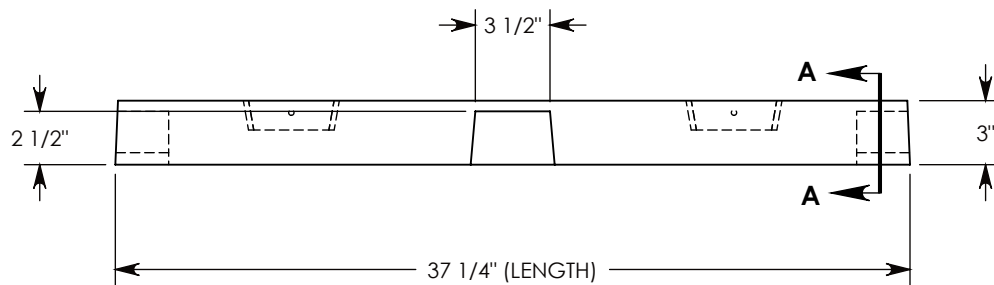
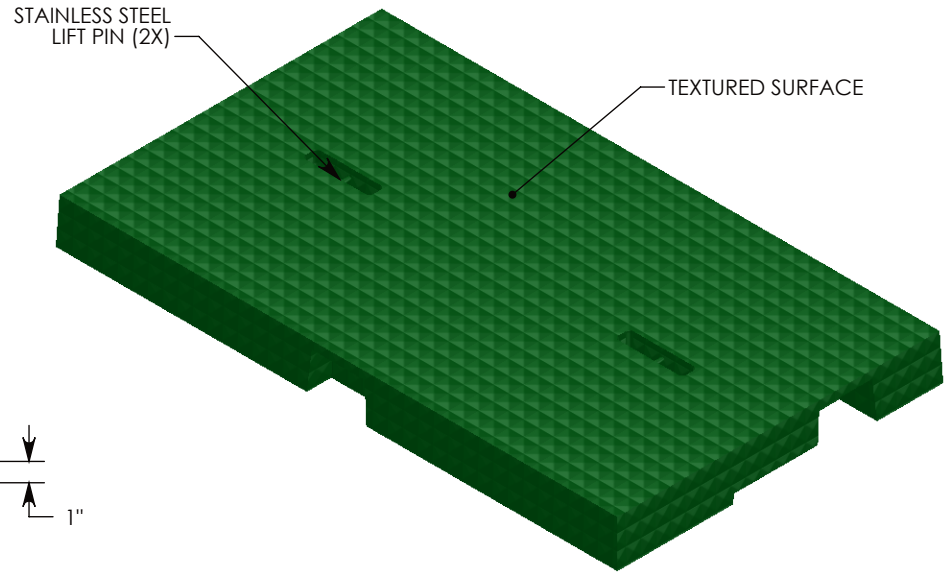
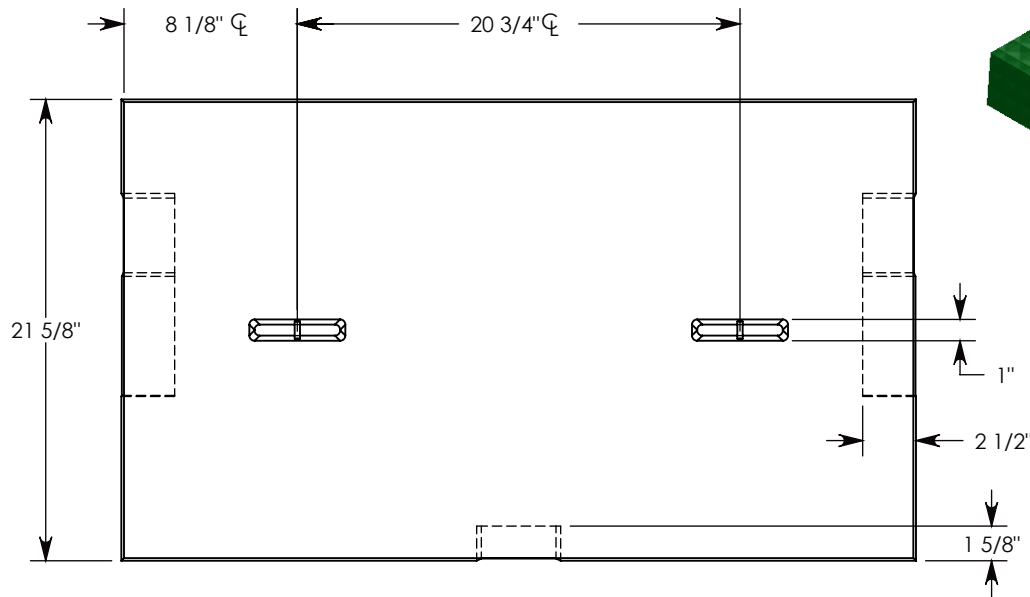


REV. B - JCG - 2/6/2018 - ADDED CUTOUTS FOR NEW FRAME
 REV. C - JCG - 2/7/2018 - ADDED DRAFT TO CUTOUTS
 REV. D - JCG - 2/6/2019 - CHANGED CUTOUTS ON SHORT SIDES



SECTION A-A

AASHTO H-20 RATED - 32,000 LB. SINGLE AXLE LOAD

NOTE 1: GEL COAT - GREEN
NOTE 2: BOTTOM DETAIL ON SHEET 2
NOTE 3: 5° DRAFT ON ALL BOTTOM CUTOUTS

DRAWN BY: ROBIN FLINT	
DATE: 2/6/2019	REVISION LEVEL: D
WEIGHT: 65 LBS.	MATERIAL: FIBERGLASS



CONCAST
 1010 NORTH STAR DRIVE
 P.O. BOX 69
 ZUMBROTA, MN 55992-0069

DESCRIPTION: HEAVY TRAFFIC FIBERGLASS COVER		
DIMENSIONS ARE IN INCHES TOLERANCES: FRACTIONAL: ± 1/8" ANGULAR: ± 2°	CONTACT INFORMATION: EMAIL: INFO@CONCASTINC.COM PHONE: (507) 732-4095 FAX: (507) 732-4094	SHEET 1 OF 2
PART NUMBER: 38-22-HTFG		