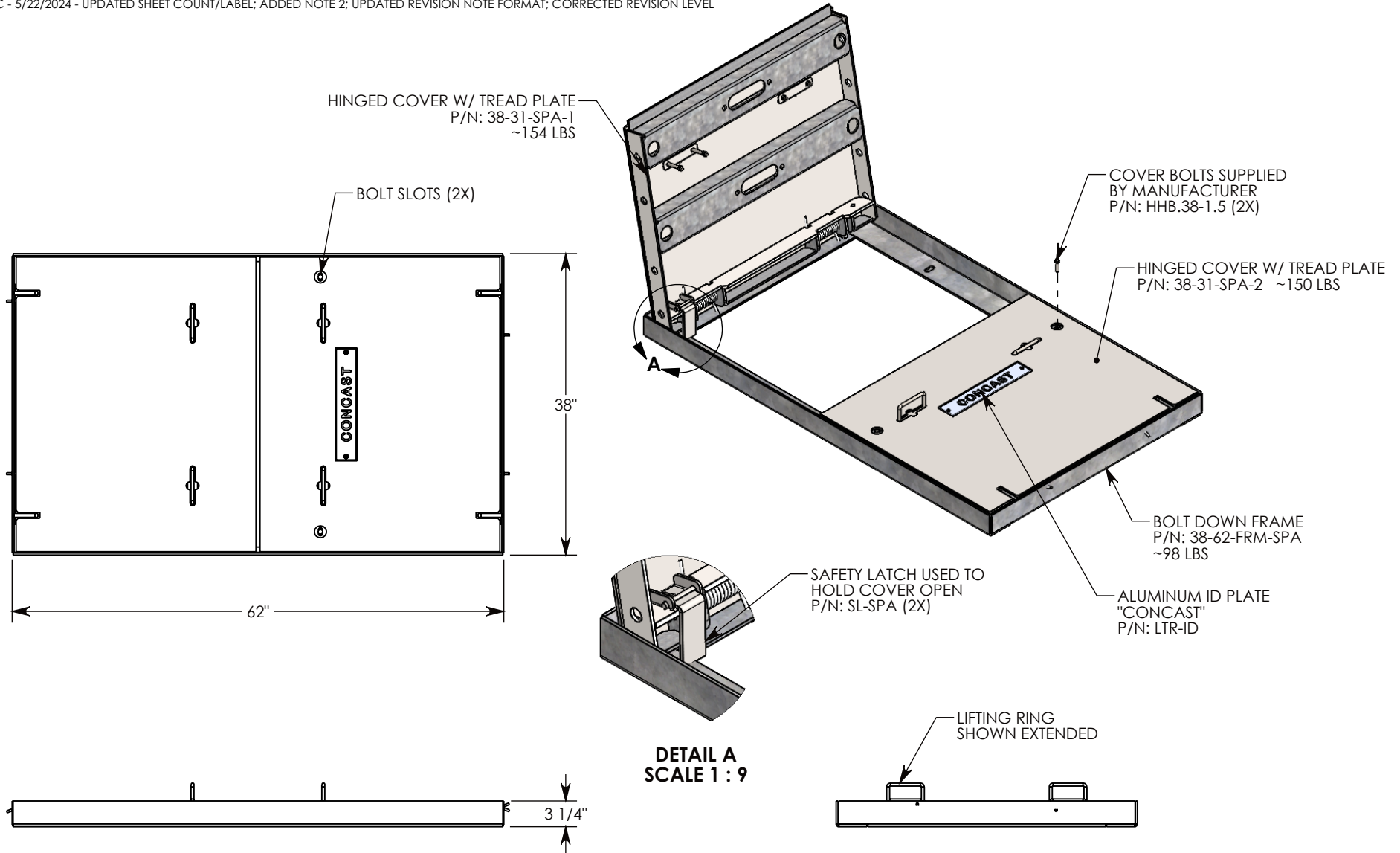


REV. A - JCG - 6/24/2019 - ADDED SAFETY LATCH
 REV. B - SIC - 5/22/2024 - UPDATED SHEET COUNT/LABEL; ADDED NOTE 2; UPDATED REVISION NOTE FORMAT; CORRECTED REVISION LEVEL



NOTE 1: FOR ADDED SECURITY, PENTA HEAD (P/N: PTA.38-1.5) OR SURELOCK BOLTS (P/N: SL.38-1.25) CAN BE ADDED
NOTE 2: SPA SPRING-ASSIST MECHANISM IS DESIGNED TO OPERATE WITH A MAXIMUM LIFT FORCE OF 70LBS

AASHTO H-20 RATED – 32,000 LB. SINGLE AXLE LOAD

DRAWN BY: JESSE GUTTING	
CREATED DATE: 5/24/2019	REVISION LEVEL: B
SAVED DATE: 5/22/2024	SAVED BY: scallahan
WEIGHT: 403 LBS.	MATERIAL: WELDED GALV. STEEL



1010 NORTH STAR DRIVE
 P.O. BOX 69
 ZUMBROTA, MN 55992-0069

DESCRIPTION: SG SPRING-ASSISTED HINGED COVER		SHEET 1 OF 1
DIMENSIONS ARE IN INCHES TOLERANCES: FRACTIONAL: ± 1/8" ANGULAR: ± 2°	CONTACT INFORMATION: EMAIL: INFO@CONCASTINC.COM PHONE: (507) 732-4095 FAX: (507) 732-4094	
PART NUMBER: 38-62-SPA		