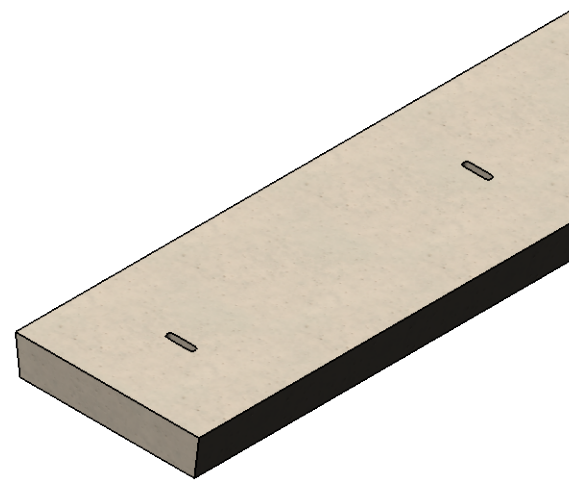
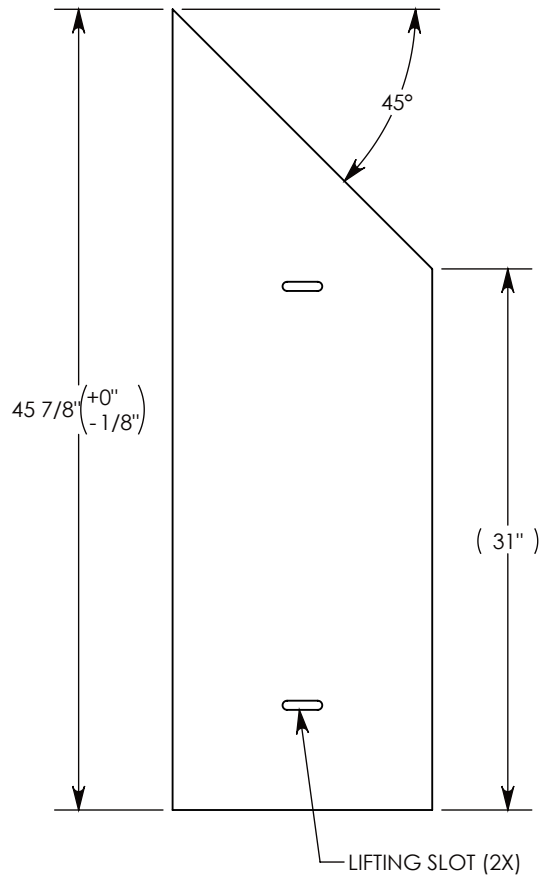


REV A - RAL - 2/8/2018 - ADDED RECESS AND THRU HOLE, CHANGED LENGTH TO 21.875"

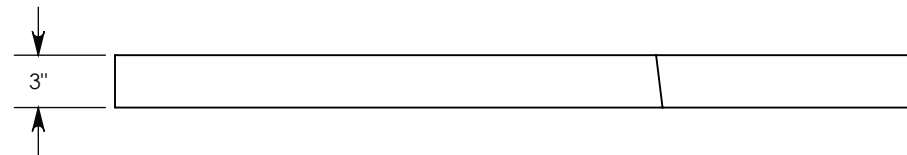
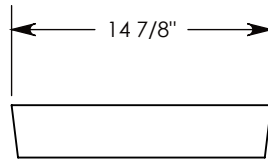
REV B - RAL - 10/2/2018 - UPDATED WEIGHT

REV C - JCG - 6/14/2021 - UPDATED STANDARD LENGTH TO 4FT

REV D - SIC - 7/27/2021 - CHANGED LIFTING INSERTS TO SLOTS; CHANGED MATERIAL TO POLYMER, WAS POLYMER CONCRETE; UPDATED WEIGHT TO 120 LBS, WAS 116 LBS



COVER ASSEMBLES ONTO 10" OR 12" INSIDE WIDTH HEAVY TRAFFIC RATED CONCAST HT3 CHANNEL



AASHTO H-20 RATED – 32,000 LB. SINGLE AXLE LOAD

DRAWN BY: **JESSE GUTTING**

CREATED DATE: **8/22/2002** REVISION LEVEL: **D**

SAVED DATE: **8/20/2021** SAVED BY: **jgutting**

WEIGHT: **120 LBS.** MATERIAL: **POLYMER**

**CONCAST**  
 1010 NORTH STAR DRIVE  
 P.O. BOX 69  
 ZUMBROTA, MN 55992-0069

DESCRIPTION:  
**HEAVY TRAFFIC COVER**

DIMENSIONS ARE IN INCHES  
 TOLERANCES:  
 FRACTIONAL: ± 1/8"  
 ANGULAR: ± 2°

CONTACT INFORMATION:  
 EMAIL: [INFO@CONCASTINC.COM](mailto:INFO@CONCASTINC.COM)  
 PHONE: (507) 732-4095  
 FAX: (507) 732-4094

SHEET 1 OF 1

PART NUMBER:  
**8011HT3P 45R**