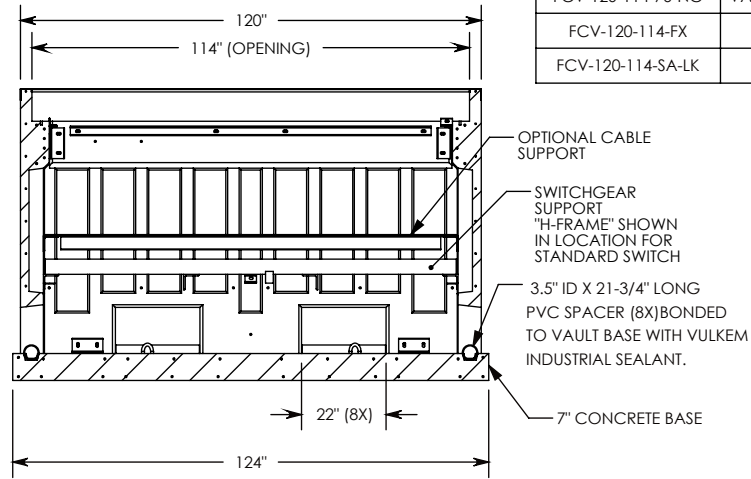
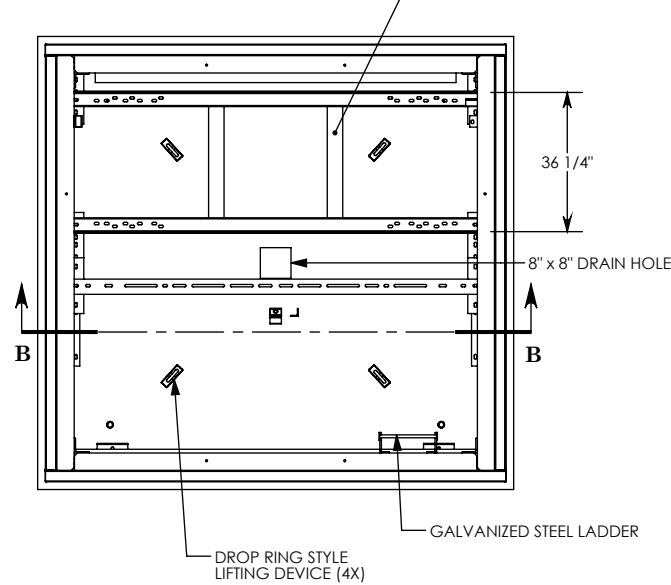
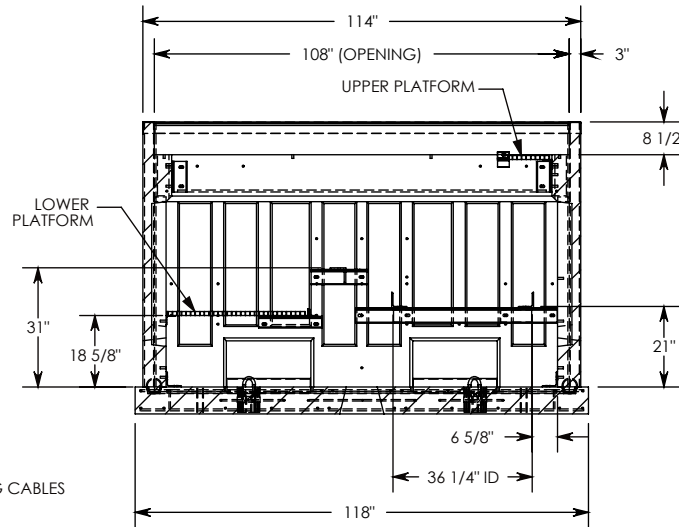
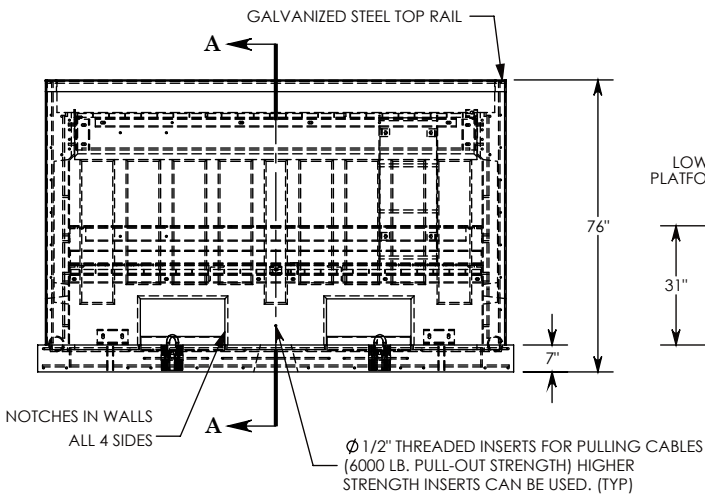


UPPER AND LOWER PLATFORM REMOVED FROM THIS VIEW.

SWITCHGEAR SUPPORT - 3/8" ANGLE (TYP) ADJUSTABLE TO FIT 2, 3, & 4 WAY UNITS. WILL ALSO FIT THE VISTA R1 MODELS.



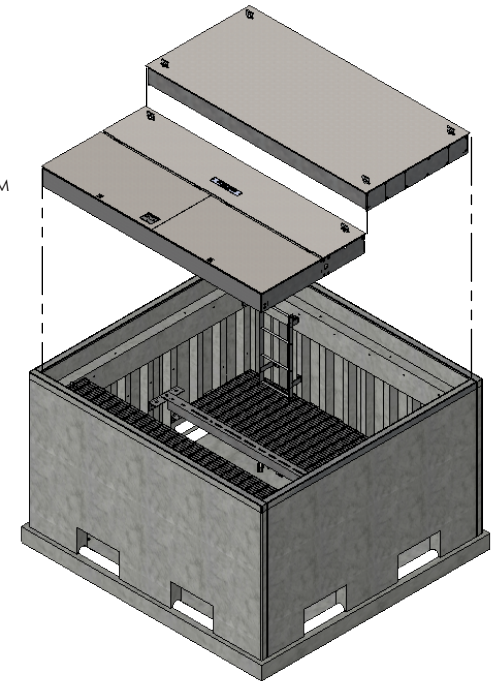
SECTION B-B



SECTION A-A

**VAULT PACKAGE BILL OF MATERIALS (BOM)**

PART NUMBER	DESCRIPTION	QTY
FCV-120-114-76-NG	VAULT WITH GALVANIZED STEEL HARDWARE (HKIT-120-114-SG)	1
FCV-120-114-FX	FIXED STEEL COVER WITH STD. DECK PLATE	1
FCV-120-114-SA-LK	SPRING-ASSISTED STEEL COVER WITH STD. DECK PLATE	1



- NOTES:
1. VAULT IS RATED FOR AASHTO H-20 32,000 LBS. PER AXLE LOAD.
  2. DESIGNED PER S & C PULL BOX SPECIFICATIONS DATA SHEET 681-51. INCLUDING ALL OPTIONAL INTERIOR STEEL HARDWARE.
  3. ALL INTERNAL HARDWARE IS GALVANIZED STEEL.
  4. VAULT COMES PRE-ASSEMBLED WITH COVERS REMOVED FOR EASY INSTALLATION OF YOUR SWITCHGEAR.
  5. UNIT MUST BE LIFTED VIA THE FOUR CAST-IN, DROP RING LIFTING DEVICES SHOWN.
  6. LISTED WEIGHT IS THE ASSEMBLED VAULT WITHOUT THE COVER.

**DRAWN BY: JESSE GUTTING**

**DATE: 11/15/2017**

**REVISION LEVEL: 0**

**WEIGHT:**

**23275 LBS.**

**MATERIAL:**

**NOTED**



**CONCAST**  
 1010 NORTH STAR DRIVE  
 P.O. BOX 69  
 ZUMBROTA, MN 55992-0069

**DESCRIPTION:**

**PRECAST CONCRETE VAULT**

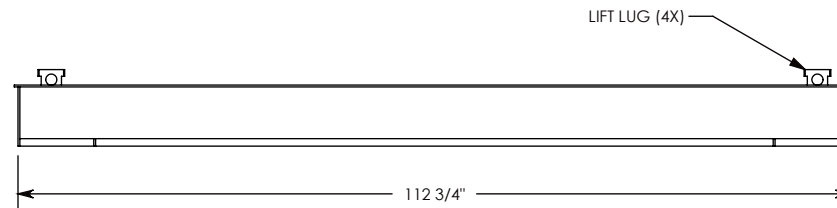
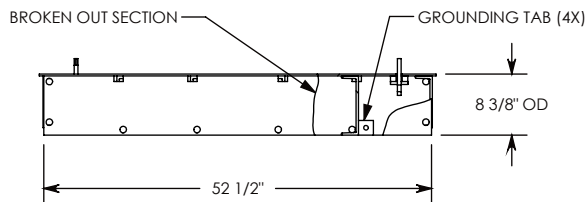
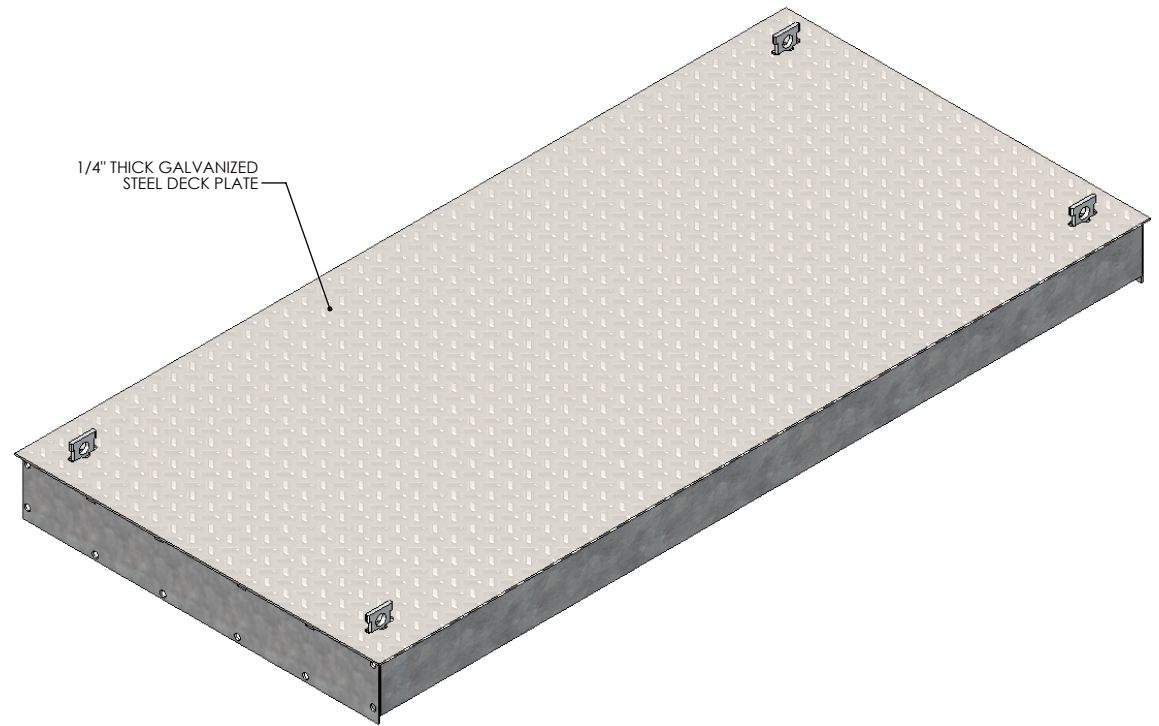
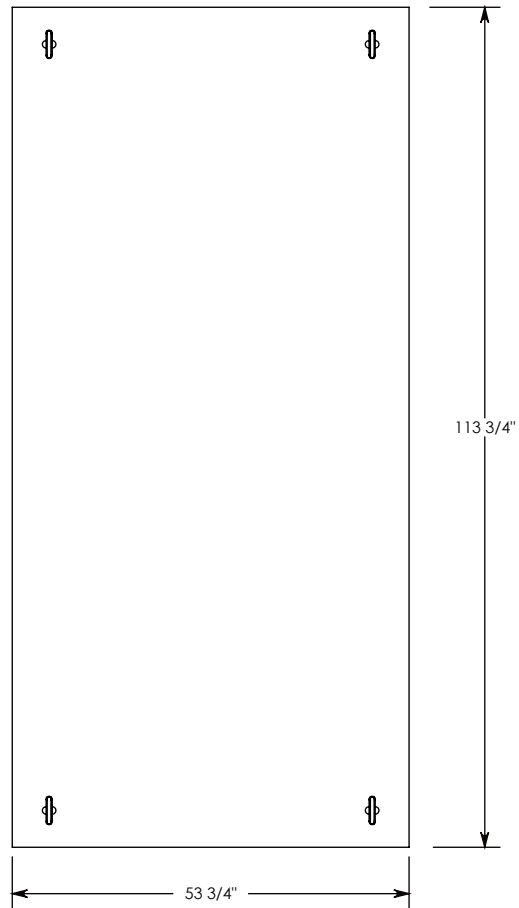
DIMENSIONS ARE IN INCHES  
 TOLERANCES:  
 FRACTIONAL: ± 1/8"  
 ANGULAR: ± 2°

CONTACT INFORMATION:  
 EMAIL: INFO@CONCASTINC.COM  
 PHONE: (507) 732-4095  
 FAX: (507) 732-4094

SHEET 1 OF 3

**PART NUMBER:**

**FCV-120-114-76-NG**



**NOTE 1:** COVER FITS A 120-114 VAULT (OPENINGSIZE = 114" X108")

H2O RATED - 32,000 LB. PER AXLE LOAD.

**DRAWN BY:** ROBIN FLINT

**DATE:** 11/15/2017

**REVISION LEVEL:** 0

**WEIGHT:**

1297 LBS.

**MATERIAL:**

WELDED GALV. STEEL



**CONCAST**  
 1010 NORTH STAR DRIVE  
 P.O. BOX 69  
 ZUMBROTA, MN 55992-0069

**DESCRIPTION:**

**VAULT COVER - FIXED**

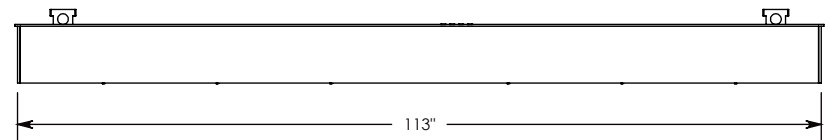
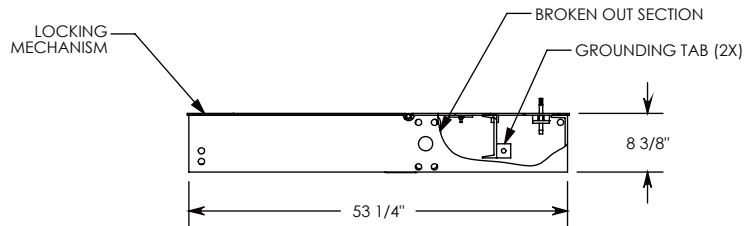
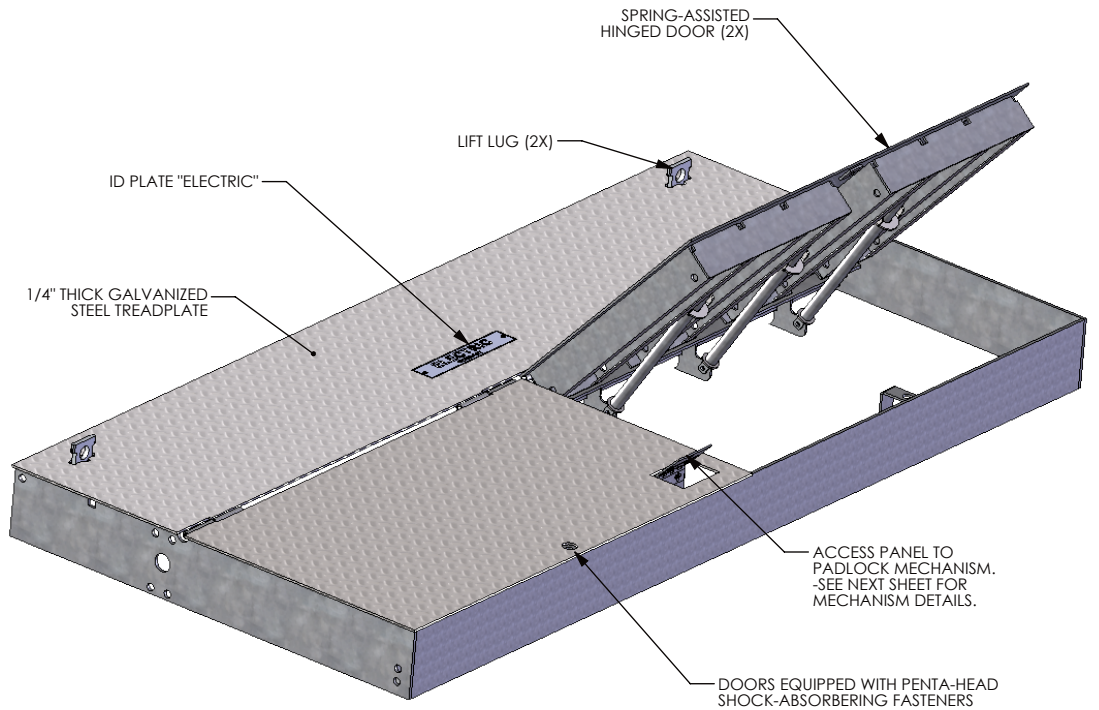
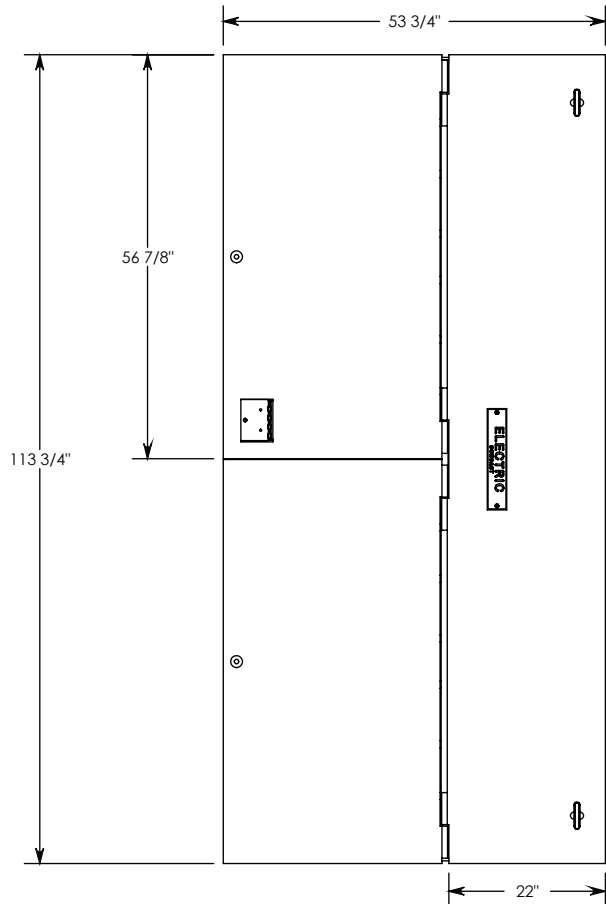
DIMENSIONS ARE IN INCHES  
 TOLERANCES:  
 FRACTIONAL: ± 1/8"  
 ANGULAR: ± 2°

CONTACT INFORMATION:  
 EMAIL: INFO@CONCASTINC.COM  
 PHONE: (507) 732-4095  
 FAX: (507) 732-4094

SHEET 1 OF 4

**PART NUMBER:**

**FCV-120-114-FX**



NOTE 1: COVER FITS A 120-114 VAULT (OPENINGSIZE = 114" X108" )

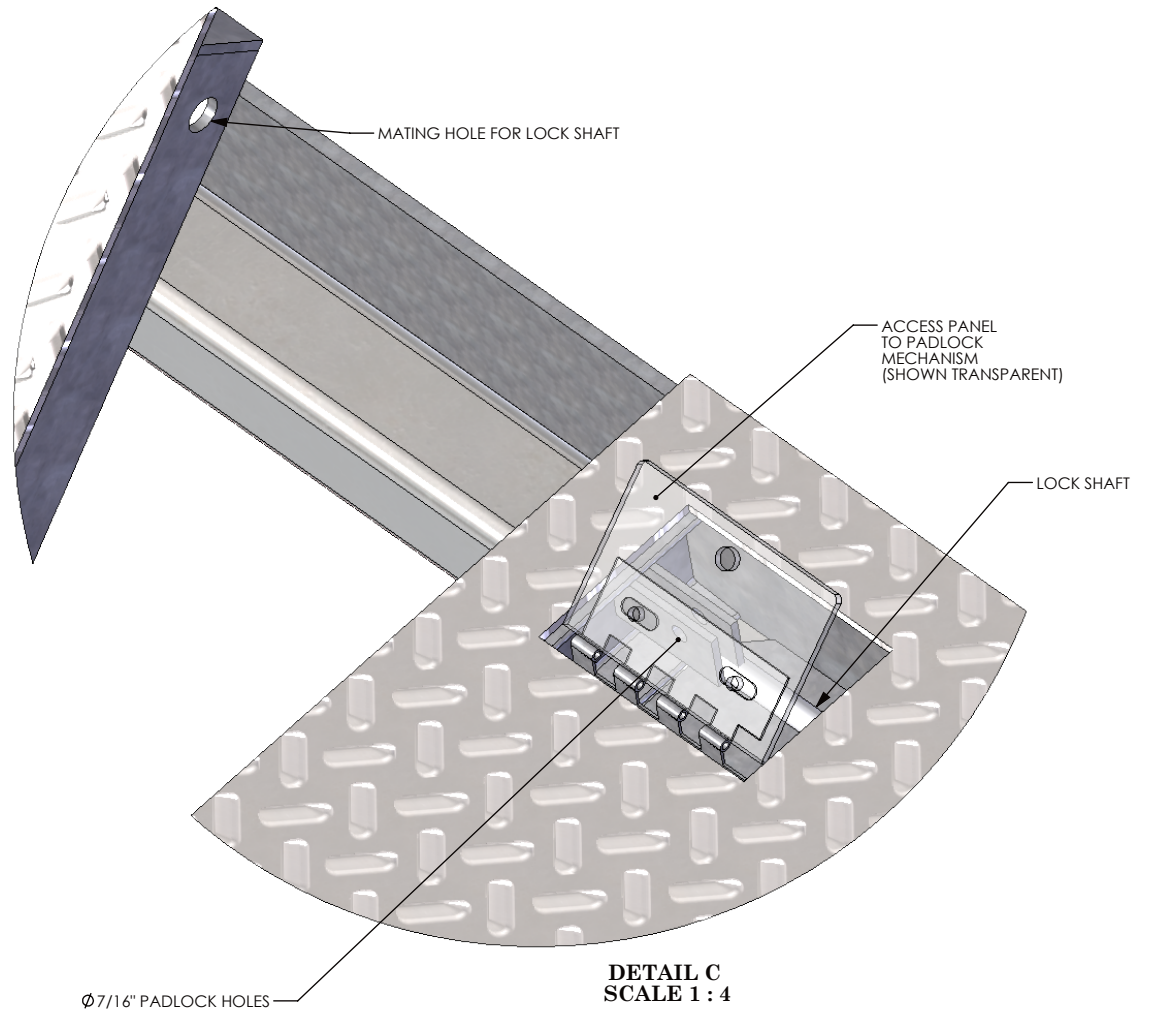
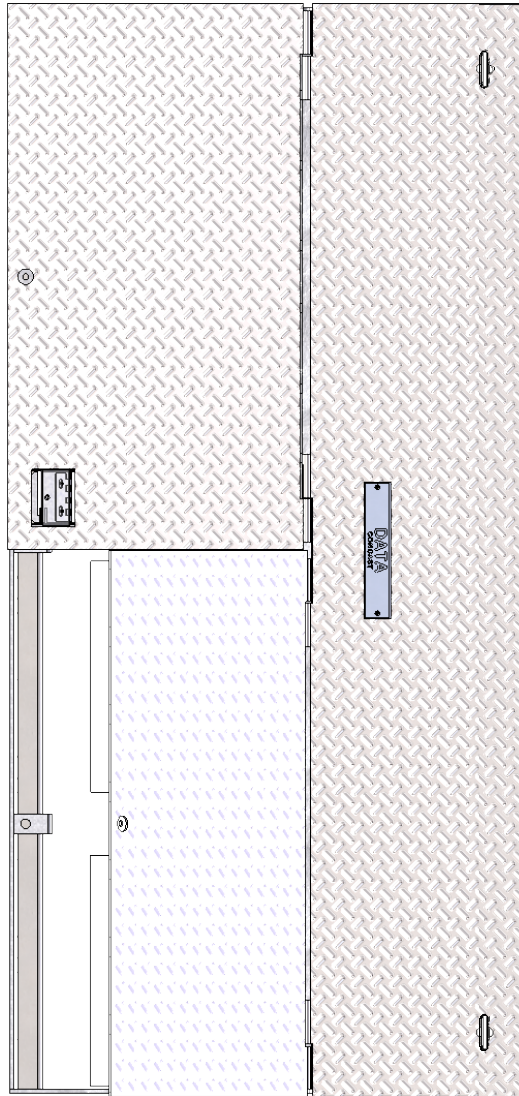
H-20 RATED - 32,000 LB. PER AXLE LOAD.

<b>DRAWN BY: ROBIN FLINT</b>	
<b>DATE: 11/15/2017</b>	<b>REVISION LEVEL: 0</b>
<b>WEIGHT: 1531 LBS.</b>	<b>MATERIAL: WELDED GALV. STEEL</b>



**CONCAST**  
 1010 NORTH STAR DRIVE  
 P.O. BOX 69  
 ZUMBROTA, MN 55992-0069

<b>DESCRIPTION:</b> <b>VAULT COVER SPRING-ASSISTED - LOCKING</b>		
DIMENSIONS ARE IN INCHES TOLERANCES: FRACTIONAL: ± 1/8" ANGULAR: ± 2°	CONTACT INFORMATION: EMAIL: INFO@CONCASTINC.COM PHONE: (507) 732-4095 FAX: (507) 732-4094	SHEET 1 OF 4
<b>PART NUMBER:</b> <b>FCV-120-114-SA-LK</b>		



**NOTE 1:** COVER FITS A 120-114 VAULT (OPENING SIZE = 114" X108")

H-20 RATED - 32,000 LB. PER AXLE LOAD.

<b>DRAWN BY: ROBIN FLINT</b>	
<b>DATE: 11/15/2017</b>	<b>REVISION LEVEL: 0</b>
<b>WEIGHT:</b> 1531 LBS.	<b>MATERIAL:</b> WELDED GALV. STEEL



**CONCAST**  
 1010 NORTH STAR DRIVE  
 P.O. BOX 69  
 ZUMBROTA, MN 55992-0069

<b>DESCRIPTION:</b> VAULT COVER SPRING-ASSISTED - LOCKING		SHEET 1 OF 4
DIMENSIONS ARE IN INCHES TOLERANCES: FRACTIONAL: ± 1/8" ANGULAR: ± 2°	CONTACT INFORMATION: EMAIL: INFO@CONCASTINC.COM PHONE: (507) 732-4095 FAX: (507) 732-4094	
<b>PART NUMBER:</b> FCV-120-114-SA-LK.		