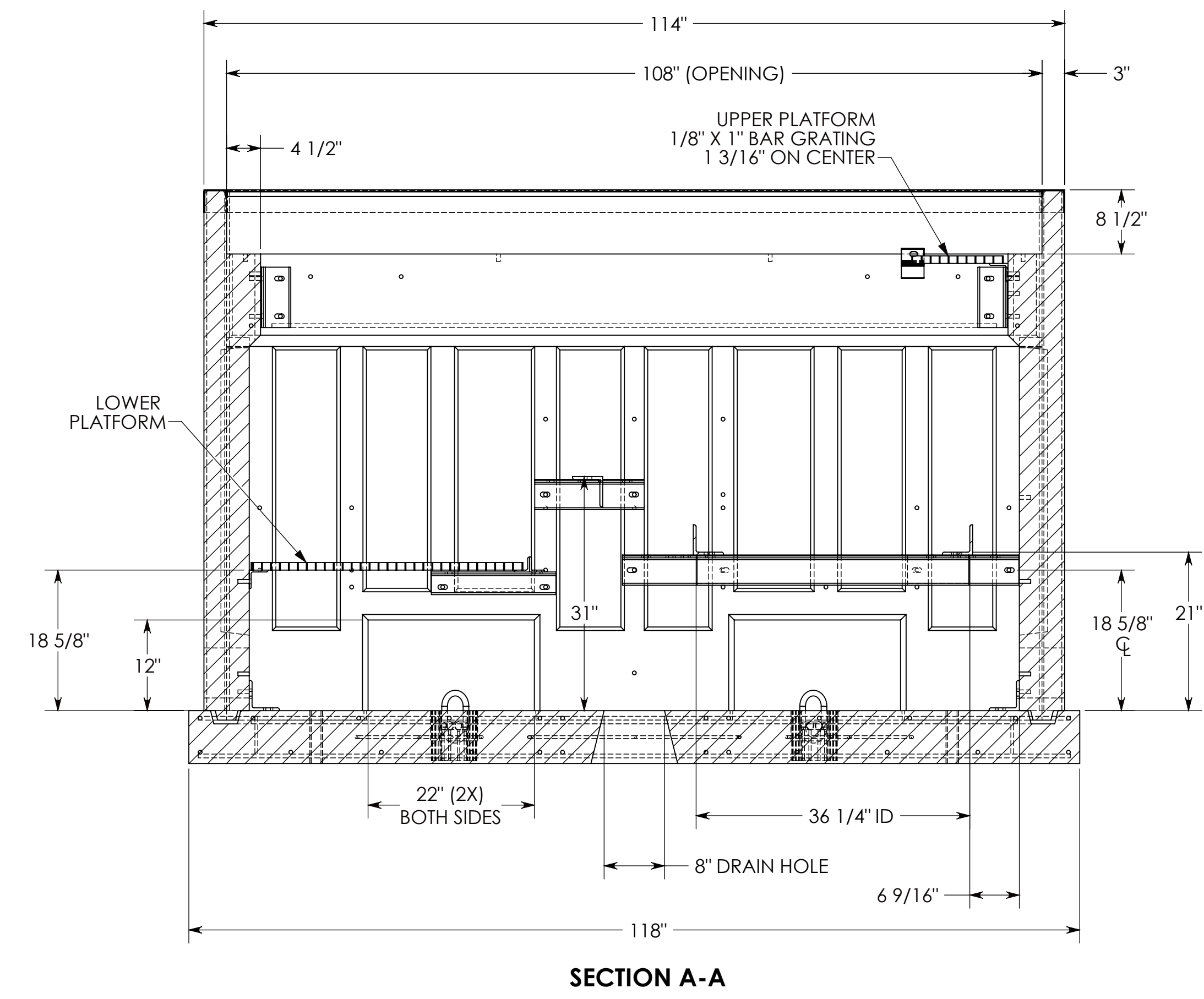
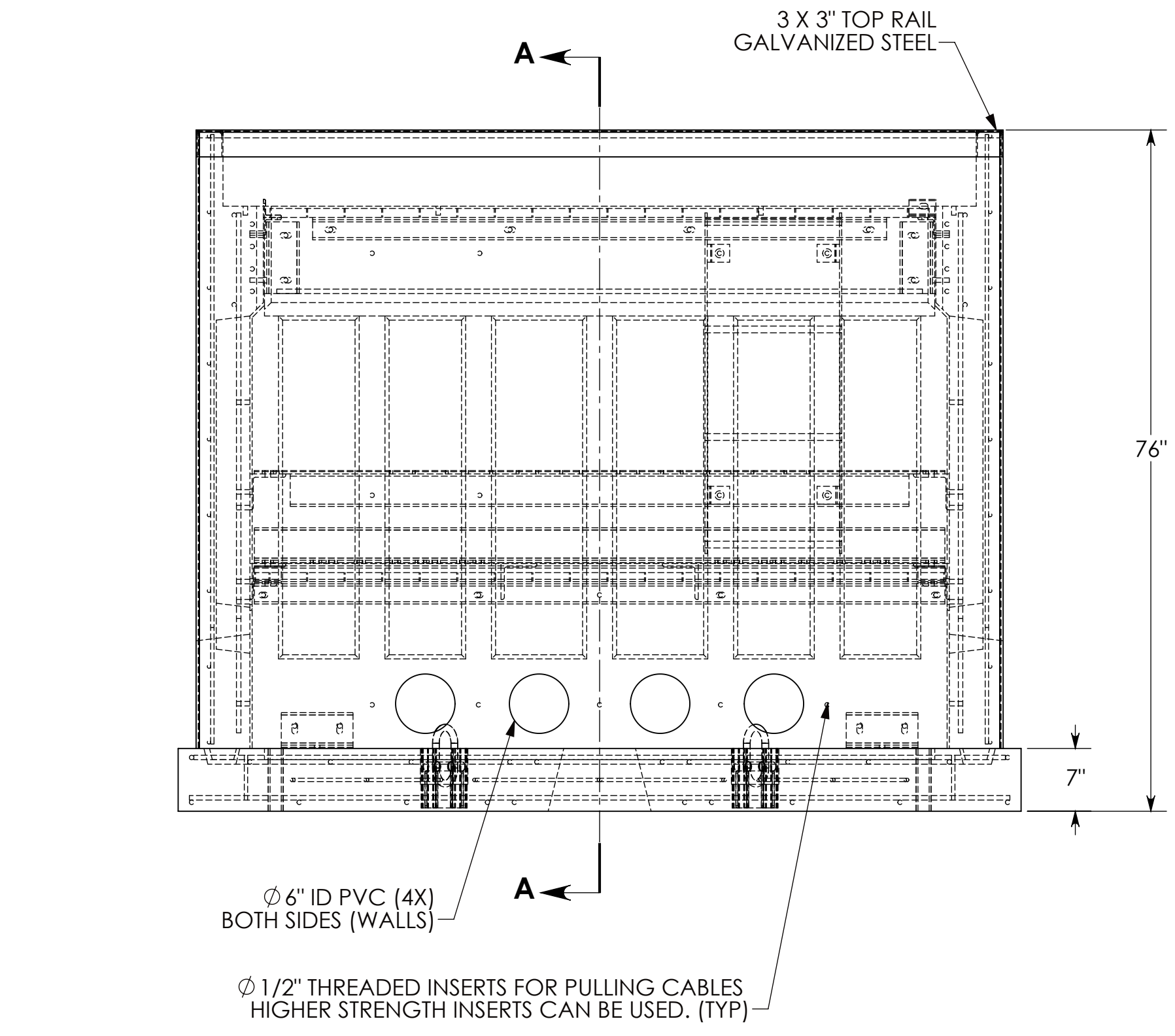
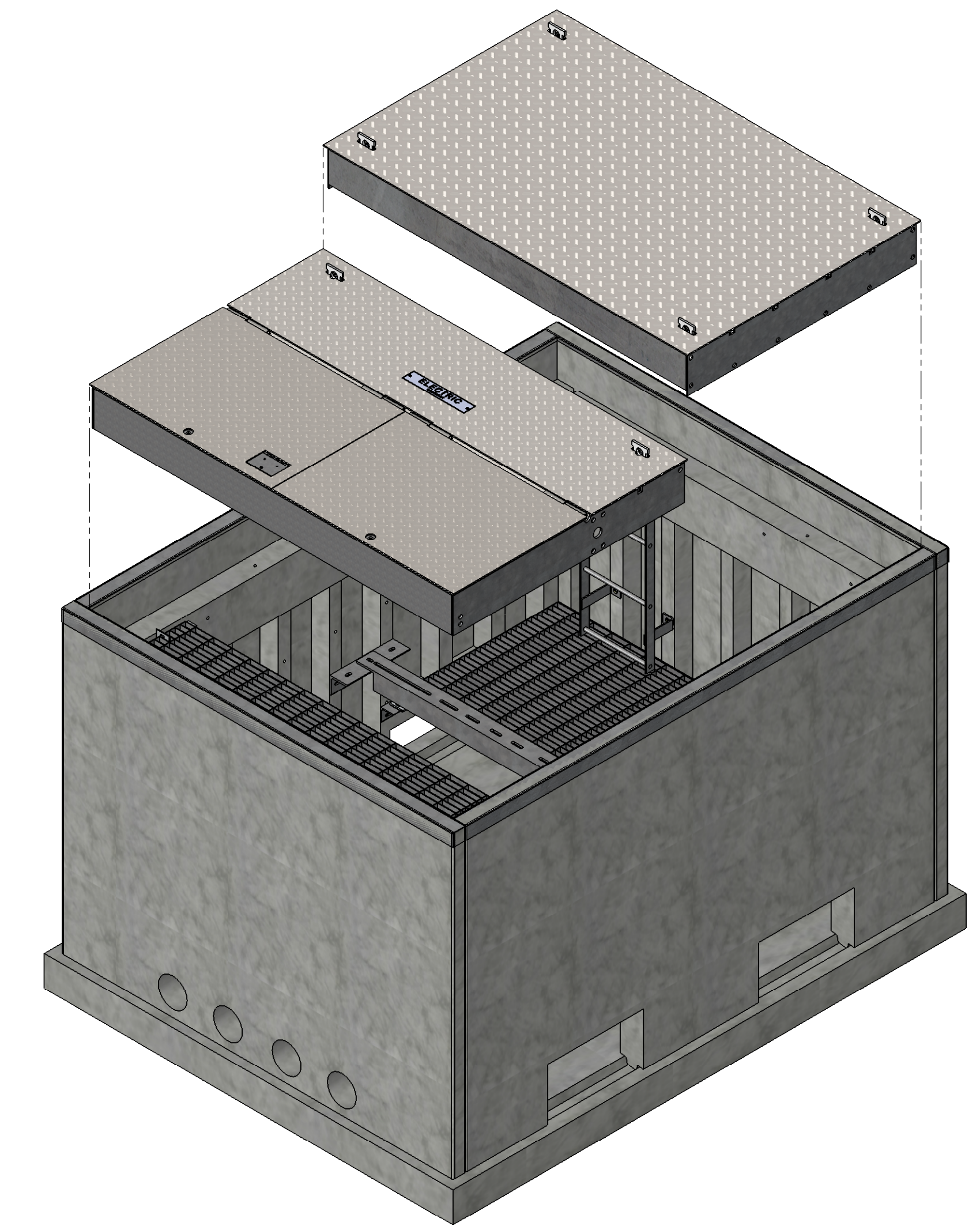
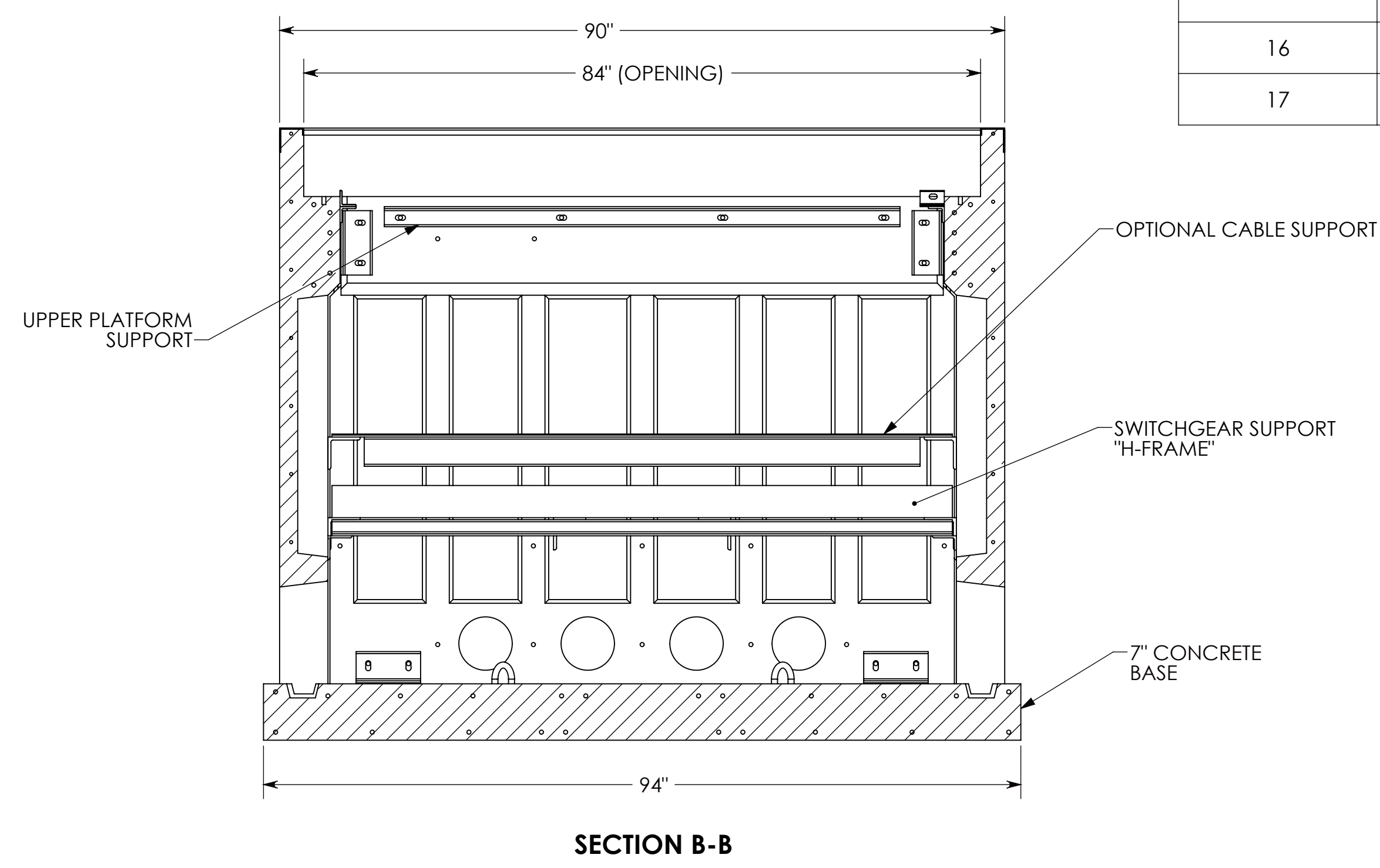
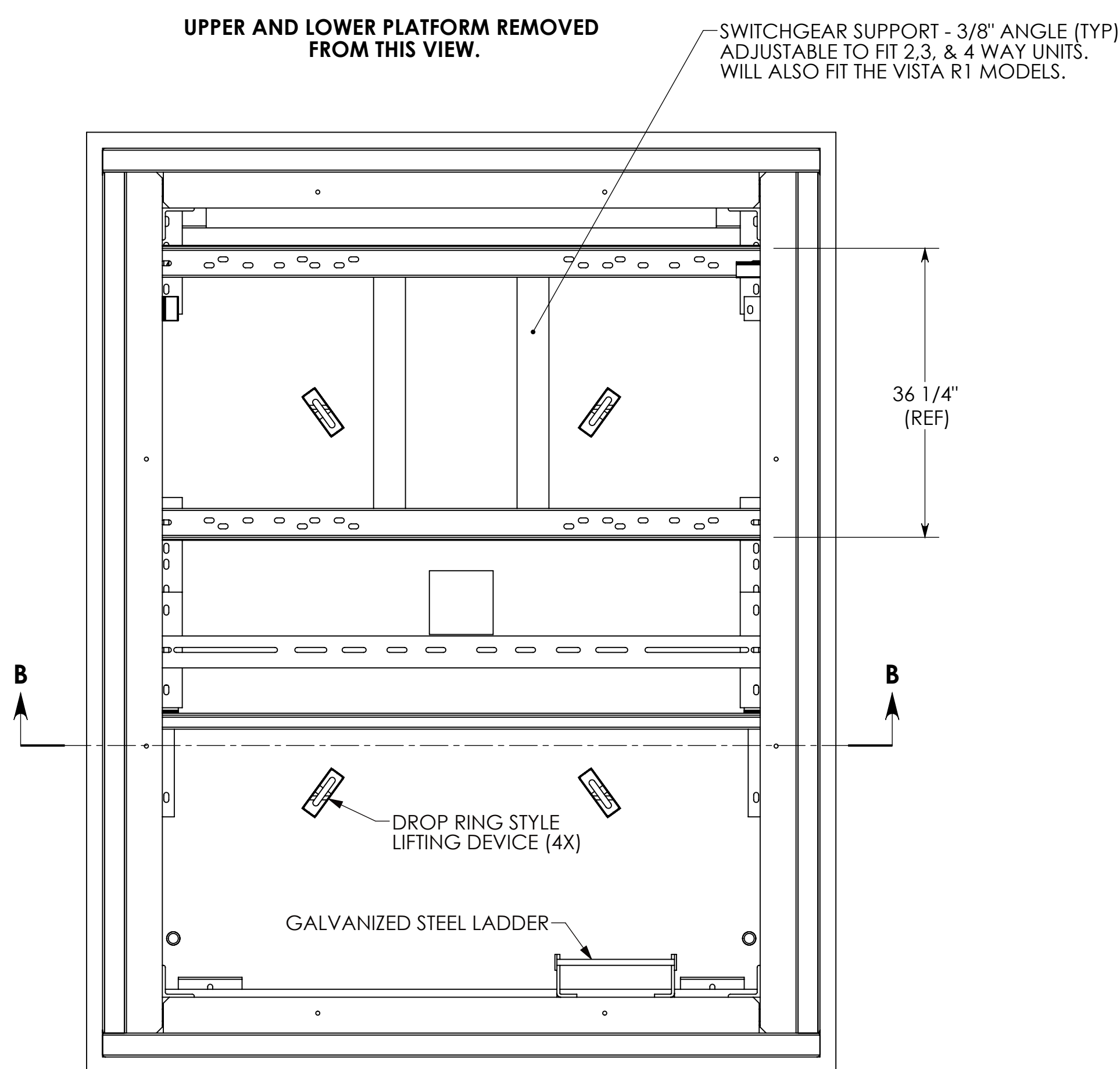


VAULT PACKAGE BILL OF MATERIALS			
ITEM NO.	PART NUMBER	DESCRIPTION	QTY.
1	FCV-90-114-76-NG	VAULT WITH GALVANIZED STEEL HARDWARE (HKIT-90-114-SG)	1
16	FCV-90-114-SA-LK	VAULT COVER SPRING-ASSISTED - LOCKING	1
17	FCV-90-114-FX	VAULT COVER - FIXED	1



- NOTES:
1. VAULT BASE AND WALLS MEET AASHTO H-20 HEAVY EQUIPMENT REQUIREMENT 32,000 LB. AXLE LOAD.
 2. DESIGNED PER S & C PULL BOX SPECIFICATIONS DATA SHEET 681-51. INCLUDING ALL OPTIONAL INTERIOR STEEL HARDWARE.
 3. ALL HARDWARE IS GALVANIZED STEEL.
 4. VAULT COMES PRE-ASSEMBLED WITH COVERS REMOVED FOR EASY INSTALLATION OF YOUR SWITCHGEAR.
 5. UNIT MUST BE LIFTED FROM THE (4) CAST-IN DROP RING LIFTING DEVICES SHOWN.
 6. WEIGHT SHOWN IS THE ASSEMBLED VAULT WITHOUT COVER.

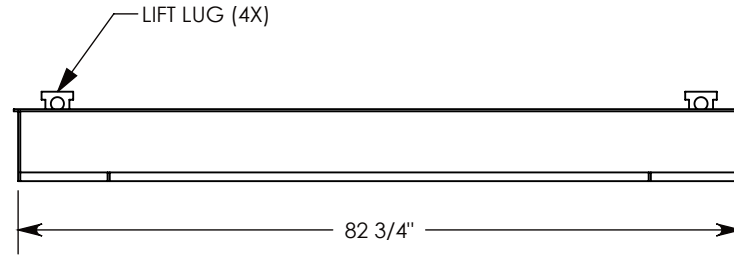
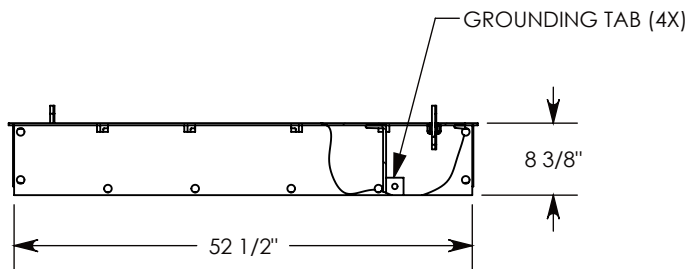
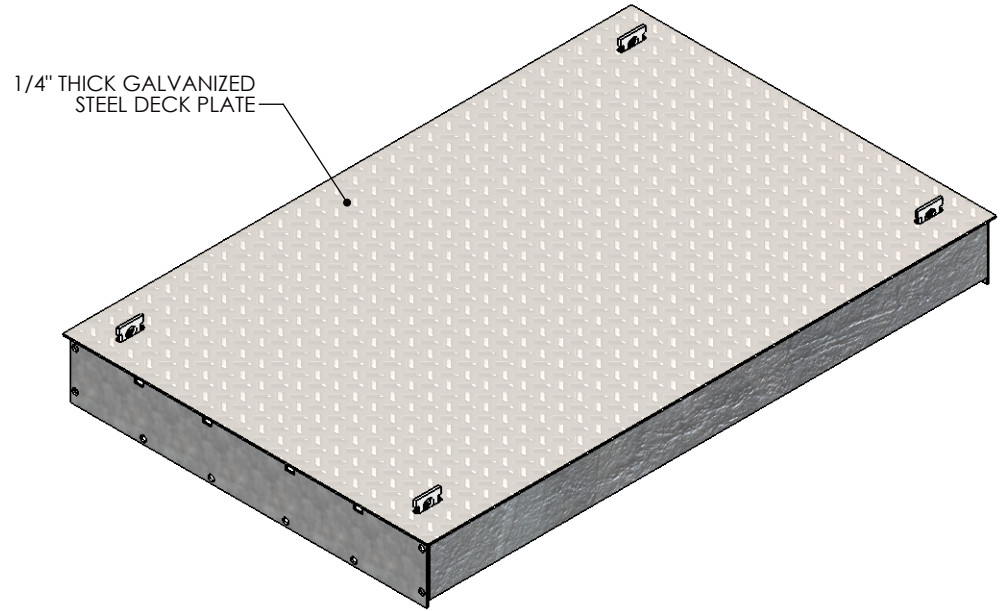
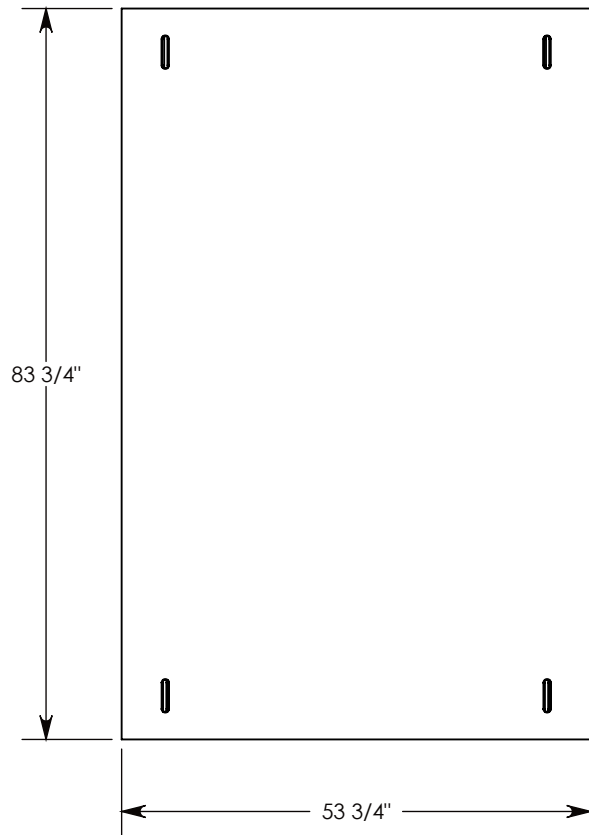
DRAWN BY: JESSE GUTTING
 DATE: 12/12/2018
 CHECKED BY: MIKE LASKA
 FOR APPROVAL
 WEIGHT: 16858 LBS



Fibercrete[®]

1010 NORTH STAR DRIVE
 P.O. BOX 69
 ZUMBROTA, MN 55992-0069
 PHONE: (507) 732-4095 FAX: (507) 732-4094
 EMAIL: INFO@CONCASTINC.COM

PROJECT NAME: FCV-90-114-76-NG PRECAST CONCRETE VAULT	DRAWING NUMBER: FCV-90-114-76-NG SCALE: 1:14	REV. D SHEET 1 OF 1
--	---	------------------------



NOTE 1: COVER FITS A 90-114 VAULT (OPENING SIZE = 84" X 108")

AASHTO H-20 RATED – 32,000 LB. SINGLE AXLE LOAD

DRAWN BY: ROBIN FLINT

DATE: 12/12/2018

REVISION LEVEL: 0

WEIGHT:

956 LBS.

MATERIAL:

WELDED GALV. STEEL



1010 NORTH STAR DRIVE
P.O. BOX 69
ZUMBROTA, MN 55992-0069

DESCRIPTION:

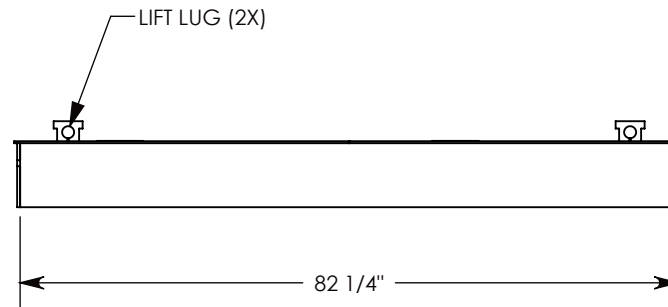
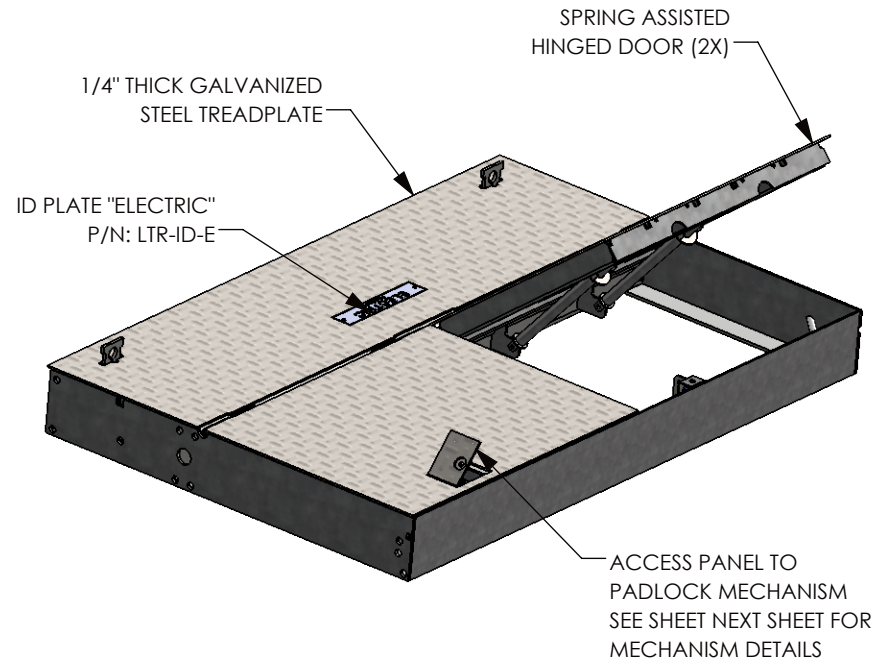
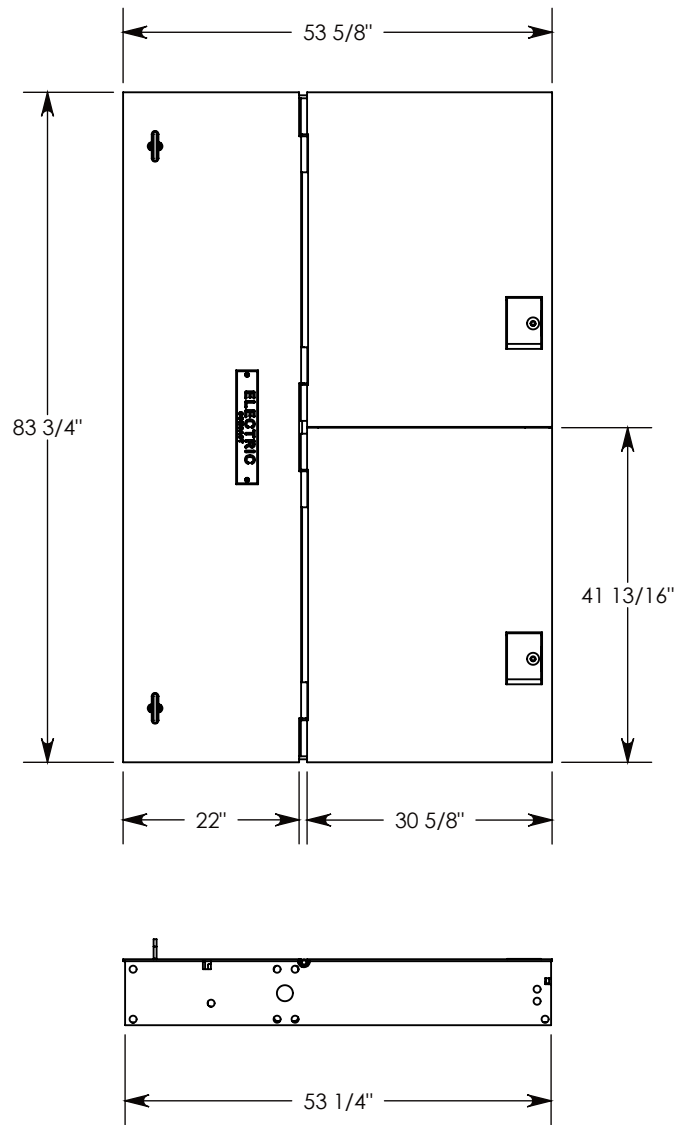
VAULT COVER - FIXED

DIMENSIONS ARE IN INCHES
TOLERANCES:
FRACTIONAL: $\pm 1/8"$
ANGULAR: $\pm 2^\circ$

CONTACT INFORMATION:
EMAIL: INFO@CONCASTINC.COM
PHONE: (507) 732-4095
FAX: (507) 732-4094

PART NUMBER:

FCV-90-114-FX



NOTE 1: COVER FITS A 90 - 114 VAULT (OPENING SIZE = 84" X 108")

AASHTO H-20 RATED – 32,000 LB. SINGLE AXLE LOAD

DRAWN BY: JESSE GUTTING

DATE: 12/12/2018

REVISION LEVEL: 0

WEIGHT:

1165 LBS.

MATERIAL:

WELDED GALV. STEEL



CONCAST
 1010 NORTH STAR DRIVE
 P.O. BOX 69
 ZUMBROTA, MN 55992-0069

DESCRIPTION:

VAULT SPRING-ASSISTED COVER

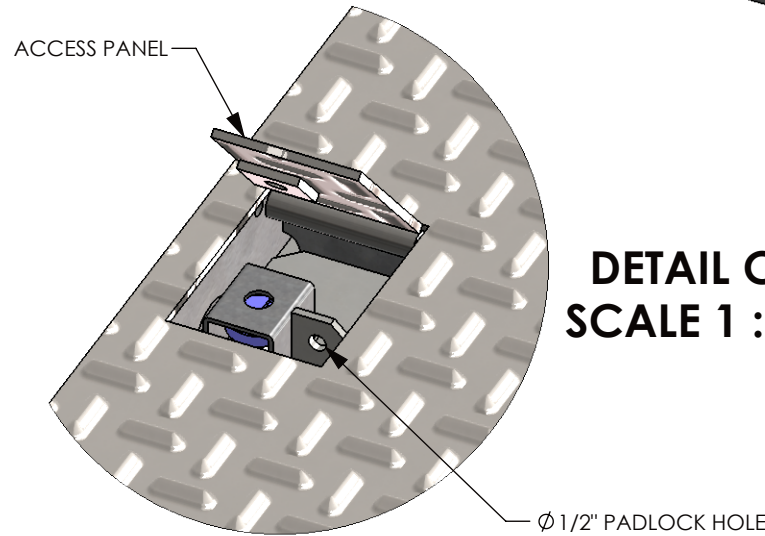
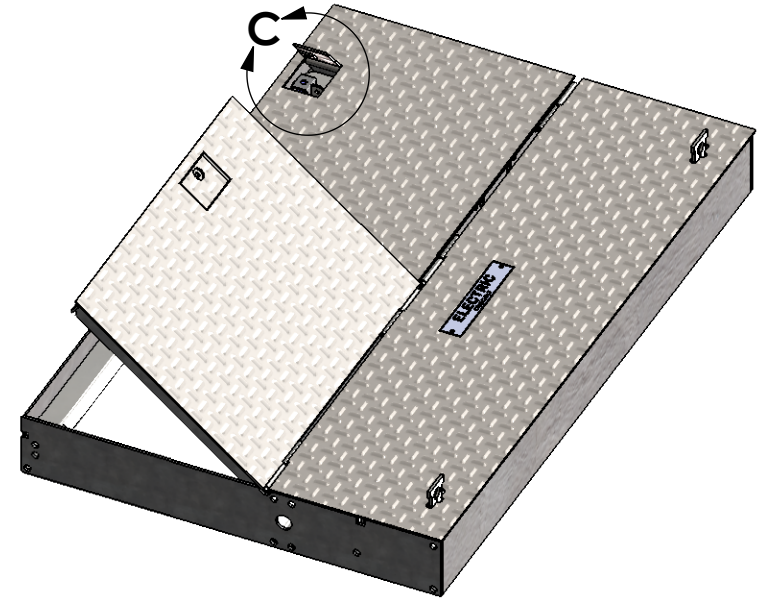
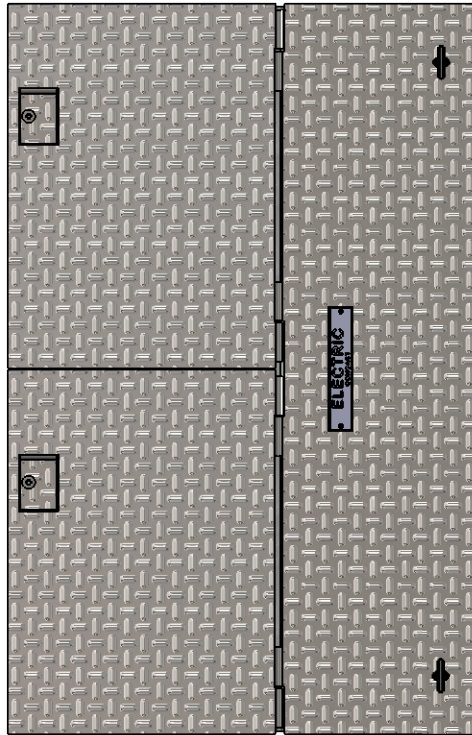
DIMENSIONS ARE IN INCHES
 TOLERANCES:
 FRACTIONAL: ± 1/8"
 ANGULAR: ± 2°

CONTACT INFORMATION:
 EMAIL: INFO@CONCASTINC.COM
 PHONE: (507) 732-4095
 FAX: (507) 732-4094

SHEET 1 OF 5

PART NUMBER:

FCV-90-114-SA-LK-OPEN



**DETAIL C
SCALE 1 : 5**

NOTE 1: COVER FITS A 90 - 114 VAULT (OPENING SIZE = 84" X 108")

AASHTO H-20 RATED – 32,000 LB. SINGLE AXLE LOAD

DRAWN BY: JESSE GUTTING

DATE: 12/12/2018

REVISION LEVEL: 0

WEIGHT:

1165 LBS.

MATERIAL:

WELDED GALV. STEEL



1010 NORTH STAR DRIVE
P.O. BOX 69
ZUMBROTA, MN 55992-0069

DESCRIPTION:

VAULT SPRING-ASSISTED COVER

DIMENSIONS ARE IN INCHES

TOLERANCES:
FRACTIONAL: ± 1/8"
ANGULAR: ± 2°

CONTACT INFORMATION:

EMAIL: INFO@CONCASTINC.COM
PHONE: (507) 732-4095
FAX: (507) 732-4094

SHEET 1 OF 5

PART NUMBER:

FCV-90-114-SA-LK-OPEN