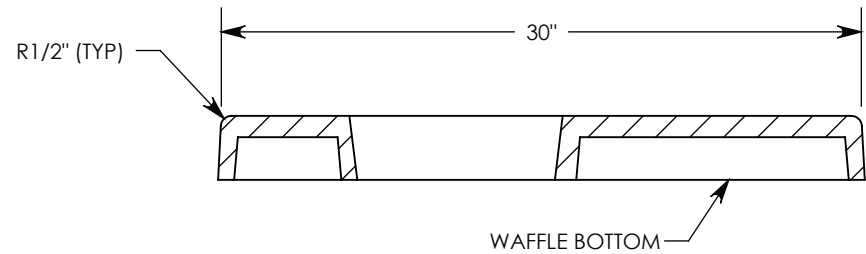
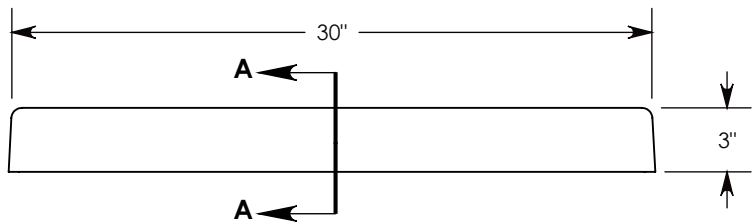
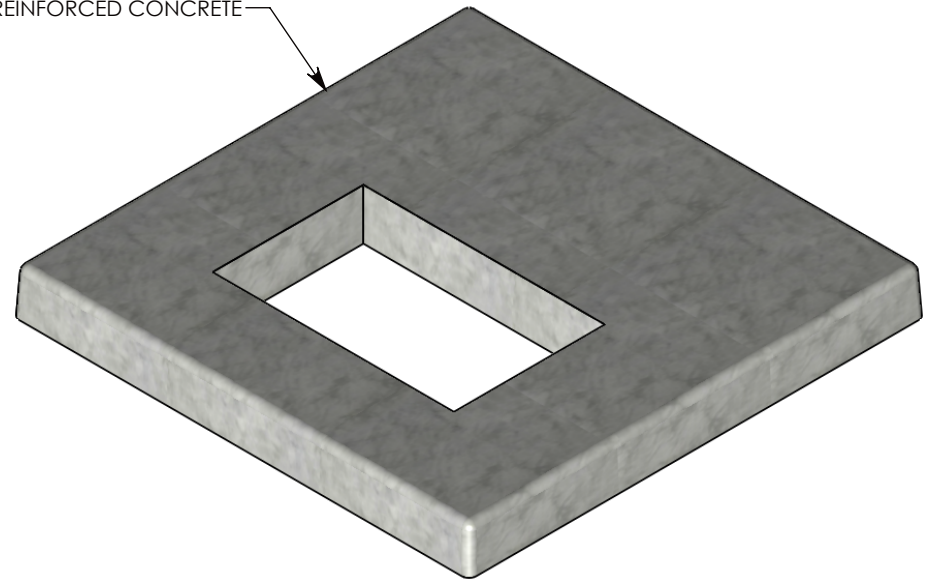


FIBER & STEEL REINFORCED CONCRETE



SECTION A-A

6,000 PSI CONCRETE  
 ALL VERTICAL SURFACES HAVE A 5 TO 7 DEGREE DRAFT  
 MOUNTING INSERTS CAN BE FIELD INSTALLED.  
 CONCAST TOGGLE NUTS ARE IDEAL; SPECIFY QUANTITY AND SIZE (1/4", 3/8", OR 1/2") WHEN ORDERING.

**DRAWN BY: ROBIN FLINT**

**DATE: 7/7/2014**

**REVISION LEVEL: 0**

**WEIGHT:**

**101 LBS.**

**MATERIAL:**

**CAST FIBERCRETE**



1010 NORTH STAR DRIVE  
 P.O. BOX 69  
 ZUMBROTA, MN 55992-0069

**DESCRIPTION:**

**FIBERCRETE FLAT PAD**

DIMENSIONS ARE IN INCHES  
 TOLERANCES:  
 FRACTIONAL: ± 1/8"  
 ANGULAR: ± 2°

CONTACT INFORMATION:  
 EMAIL: INFO@CONCASTINC.COM  
 PHONE: (507) 732-4095  
 FAX: (507) 732-4094

SHEET 1 OF 1

**PART NUMBER:**

**FP-30-30-3-1016 (6)**