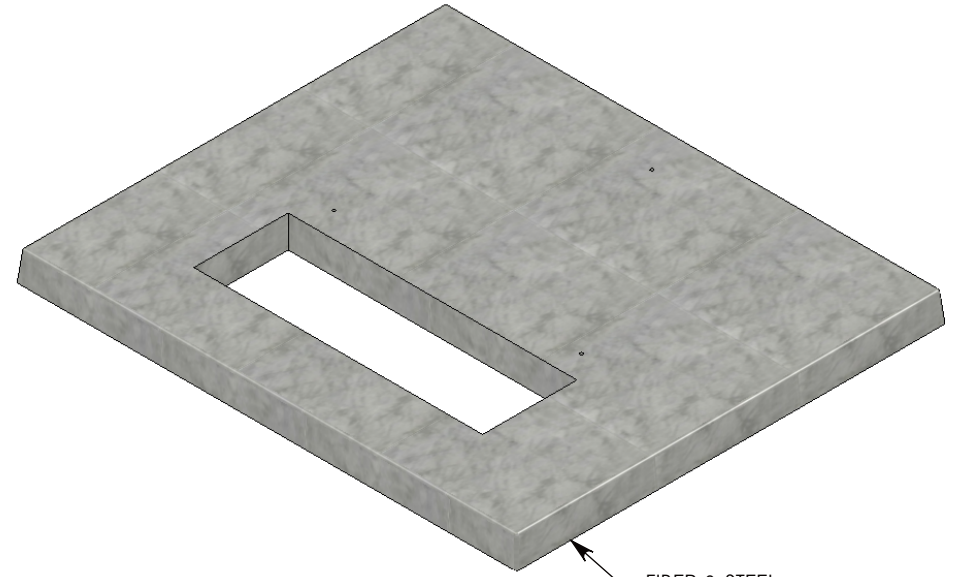
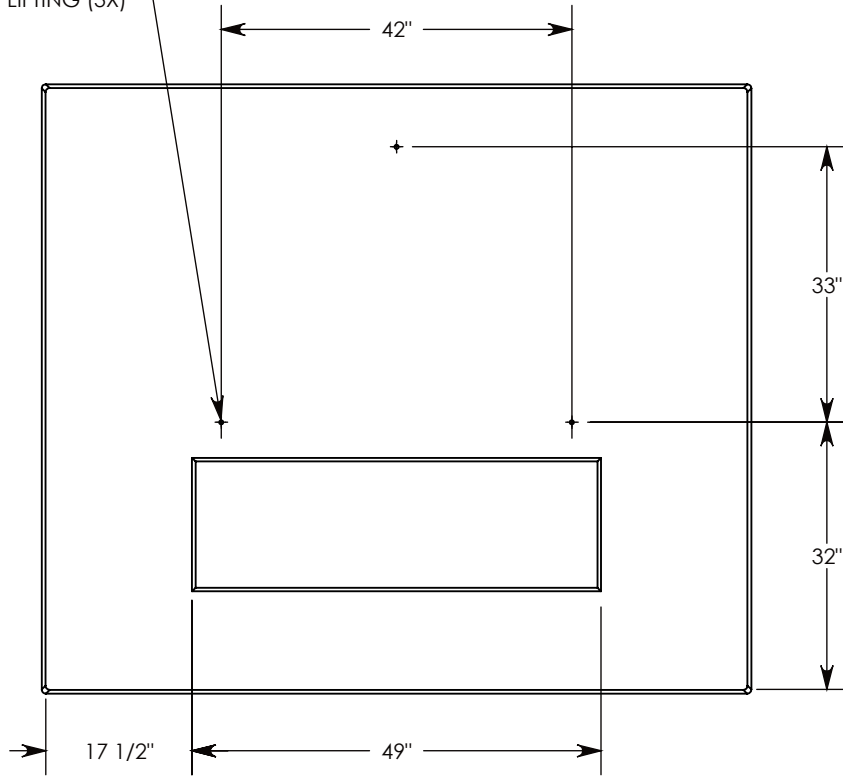
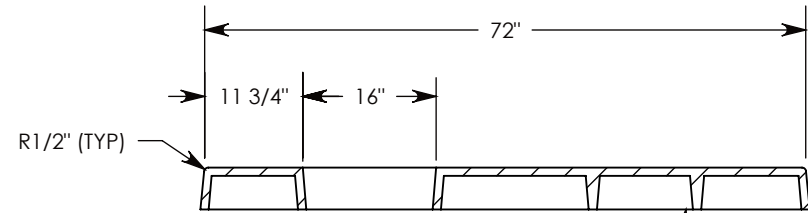
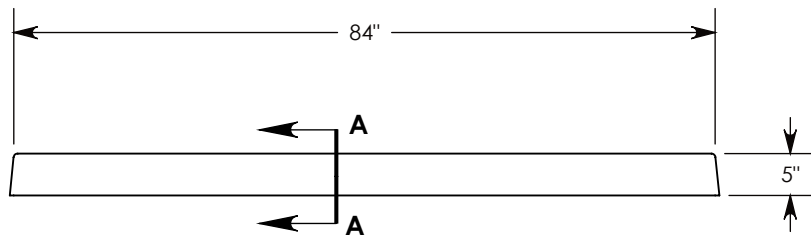


**FIBERCRETE®**

Ø 1/2"-13UNC INSERTS FOR LIFTING (3X)



FIBER & STEEL REINFORCED CONCRETE



WAFFLE BOTTOM

**SECTION A-A**

7,500 PSI CONCRETE  
 ALL VERTICAL SURFACES HAVE A 5 TO 7 DEGREE DRAFT  
 IF SPECIFIC INSERTS OR MOUNTING HARDWARE IS REQUIRED, PLEASE SPECIFY WHEN ORDERING

**DRAWN BY: ROBIN FLINT**

**DATE: 9/24/2012**

**REVISION LEVEL: 0**

**WEIGHT:**

**813 LBS.**

**MATERIAL:**

**CAST FIBERCRETE**



1010 NORTH STAR DRIVE  
 P.O. BOX 69  
 ZUMBROTA, MN 55992-0069

**DESCRIPTION:**

**FIBERCRETE FLAT PAD**

DIMENSIONS ARE IN INCHES  
 TOLERANCES:  
 FRACTIONAL: ± 1/8"  
 ANGULAR: ± 2°

CONTACT INFORMATION:  
 EMAIL: INFO@CONCASTINC.COM  
 PHONE: (507) 732-4095  
 FAX: (507) 732-4094

SHEET 1 OF 1

**PART NUMBER:**

**FP-72-84-5-1649 (12)**