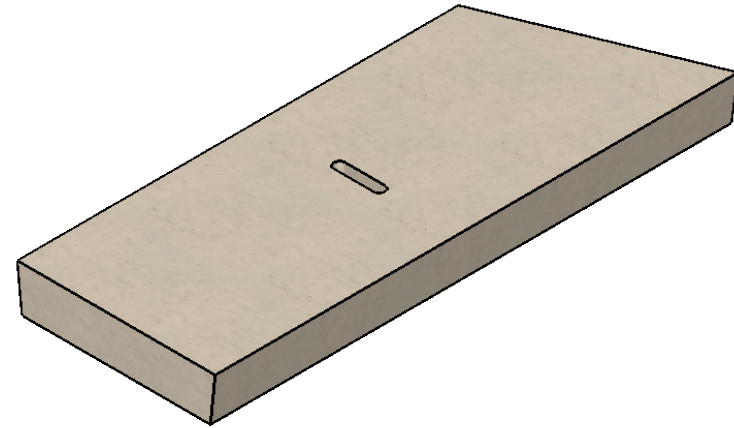
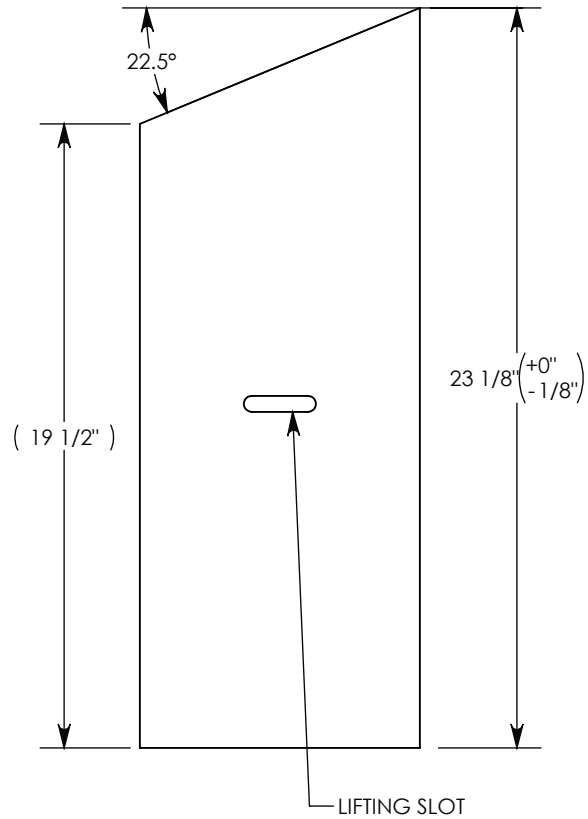
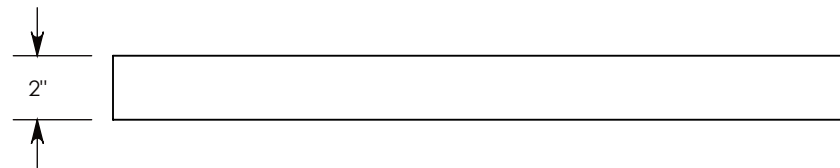
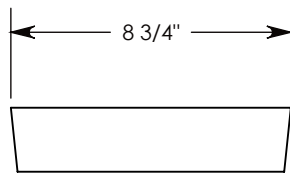


REV A - RAL - 2/9/2018 - ADDED RECESS AND THRU HOLES, CHANGED LENGTH TO 24"
 REV. B - JCG - 8/23/2021 - REMOVED INSERT, ADDED LIFTING SLOT



COVER ASSEMBLES ONTO 6" INSIDE WIDTH
 HEAVY TRAFFIC RATED CONCAST CHANNEL



AASHTO H-20 RATED – 32,000 LB. SINGLE AXLE LOAD

DRAWN BY: JESSE GUTTING	
CREATED DATE: 8/22/2002	REVISION LEVEL: B
SAVED DATE: 8/23/2021	SAVED BY: jgutting
WEIGHT: 26 LBS.	MATERIAL: POLYMER

CONCAST
 1010 NORTH STAR DRIVE
 P.O. BOX 69
 ZUMBROTA, MN 55992-0069

DESCRIPTION:		SHEET 1 OF 1
HEAVY TRAFFIC COVER		
DIMENSIONS ARE IN INCHES	CONTACT INFORMATION:	
TOLERANCES:	EMAIL: INFO@CONCASTINC.COM	
FRACTIONAL: ± 1/8" ANGULAR: ± 2°	PHONE: (507) 732-4095 FAX: (507) 732-4094	
PART NUMBER:		
HTCP06 22.5L		