

3/8"-16 UNC X 2-1/2" LG SURELOCK SS BOLT  
P/N: SL.38-2.5

ACCESS COVER PLATE  
P/N: AC-VC2

H-20 HEAVY TRAFFIC RATED  
GALVANIZED STEEL COVER  
~195 LBS  
P/N: 38-38-RSGSLP

1/2"-13 UNC X 1.5" LG HEX HD BOLT (4X)  
P/N: HHB.5-1.5

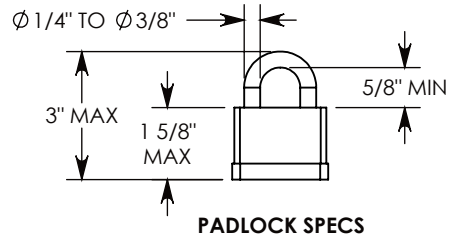
BOLT-DOWN GALV. STEEL FRAME  
~70 LBS  
P/N: 38-38-FRMSLP

CONCRETE PULL BOX  
~1844 LBS  
P/N: PB16-38-38-42

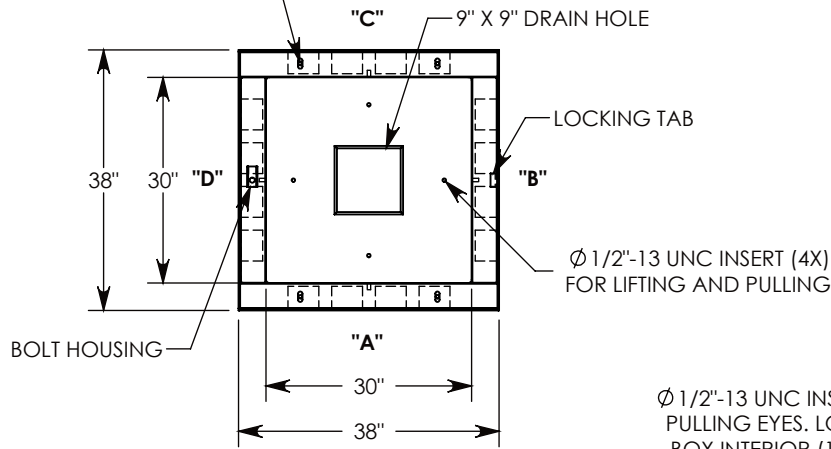
CON-DUCT TERMINATIONS ARE CAST  
INTO BOX SIDEWALLS. 16 PER SIDE (4X)  
THEY FIT UP TO 4" PVC PIPE. TO ACCESS  
THE HOLES, BREAK THE PLASTIC SEAL

LIFTING LUG  
SHOWN EXTENDED

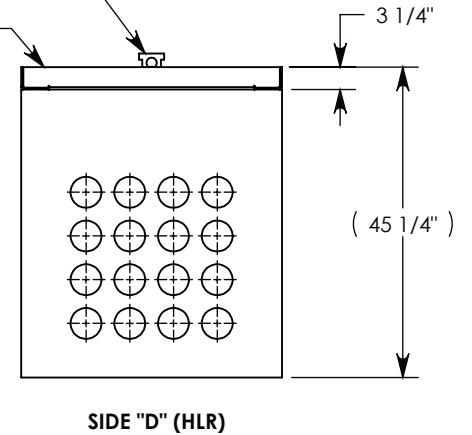
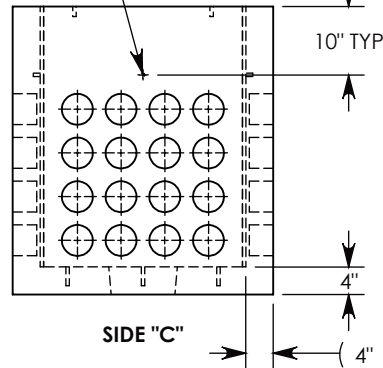
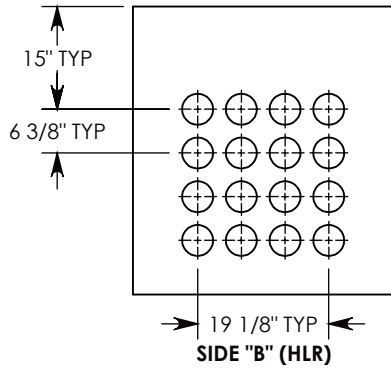
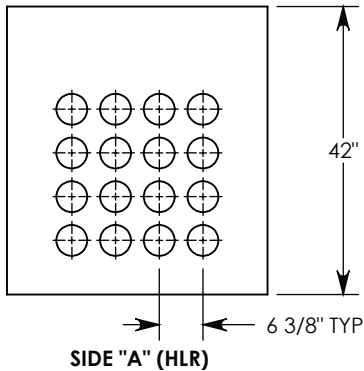
COVER SHOWN IN THIS VIEW



Ø 1/2"-13 UNC INSERT (4X)  
FOR LIFTING AND BOLT DOWN



Ø 1/2"-13 UNC INSERT (4X) FOR  
PULLING EYES. LOCATED ON  
BOX INTERIOR (1X PER SIDE)



**NOTE 1:** FOR PVC SIZES SMALLER THAN 4", USE CONCAST RC41 (REDUCING COUPLER)

AASHTO H-20 RATED - 32,000 LB. SINGLE AXLE LOAD

<b>DRAWN BY: MALACHI MLINAR</b>		 1010 NORTH STAR DRIVE P.O. BOX 69 ZUMBROTA, MN 55992-0069	<b>DESCRIPTION:</b>	
<b>DATE: 7/31/2019</b>	<b>REVISION LEVEL: B</b>		<b>CONCRETE PULL BOX W/RSG COVER</b>	
<b>WEIGHT: 2109 LBS.</b>	<b>MATERIAL: NOTED</b>		DIMENSIONS ARE IN INCHES TOLERANCES: FRACTIONAL: ± 1/8" ANGULAR: ± 2°	CONTACT INFORMATION: EMAIL: INFO@CONCASTINC.COM PHONE: (507) 732-4095 FAX: (507) 732-4094
		<b>PART NUMBER: PB16-38-38-42-RSGSLP</b>		