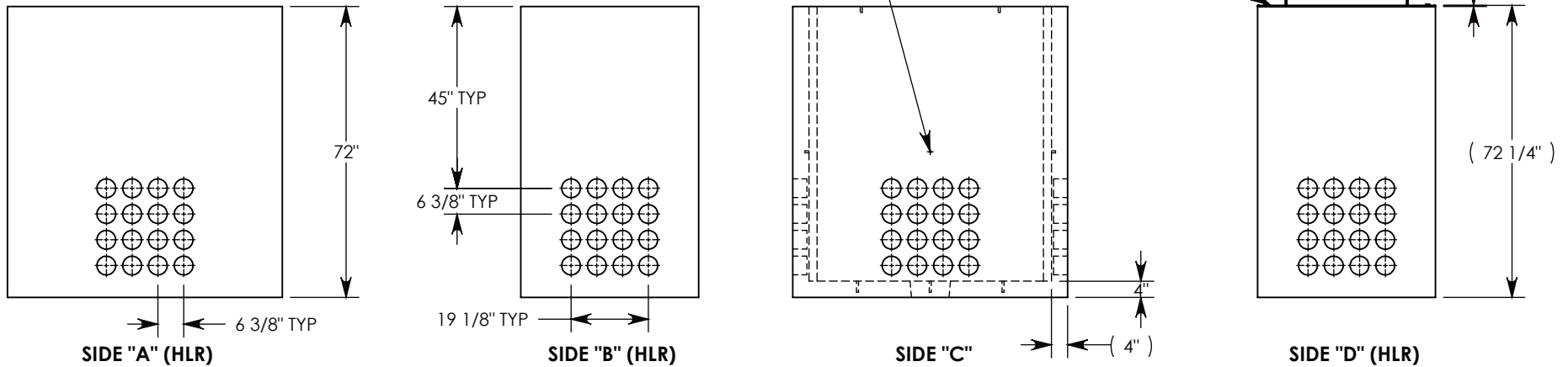


Ø 1/2"-13 UNC INSERT (4X) FOR PULLING EYES. LOCATED ON BOX INTERIOR (1X PER SIDE)

LIFTING RING SHOWN EXTENDED  
COVER SHOWN IN THIS VIEW



NOTE 1: FOR PVC SIZES SMALLER THAN 4", USE CONCAST RC41 (REDUCING COUPLER)  
NOTE 2: FOR ADDED SECURITY, PENTA HEAD BOLTS (P/N: PTA.5-1.5) CAN BE ADDED

PEDESTRIAN RATED - 200 LB. PER SQ. FOOT

<b>DRAWN BY: MALACHI MLINAR</b>		 1010 NORTH STAR DRIVE P.O. BOX 69 ZUMBROTA, MN 55992-0069	<b>DESCRIPTION:</b>		
<b>CREATED DATE: 7/31/2018</b>	<b>REVISION LEVEL: B</b>		<b>PULL BOX W/ ALUMINUM COVER</b>		
<b>SAVED DATE: 2/28/2020</b>	<b>SAVED BY: scallahan</b>		DIMENSIONS ARE IN INCHES TOLERANCES: FRACTIONAL: ± 1/8" ANGULAR: ± 2°	CONTACT INFORMATION: EMAIL: INFO@CONCASTINC.COM PHONE: (507) 732-4095 FAX: (507) 732-4094	SHEET 1 OF 1
<b>WEIGHT: 5415 LBS.</b>	<b>MATERIAL: NOTED</b>		<b>PART NUMBER: PB16-44-68-72-A</b>		