

3/8-16 UNC X 2.5" LG HEX HD BOLT (4X)
P/N: HHB.38-2.5

ALUM ID PLATE
"CONCAST"
P/N: LTR-ID

HINGED PADLOCK COVER (4X)
P/N: AC-06

1/2-13 UNC X 1.5" LG HEX HD BOLT (6X)
P/N: HHB.5-1.5

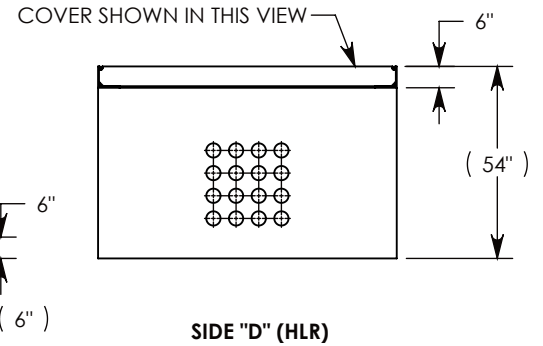
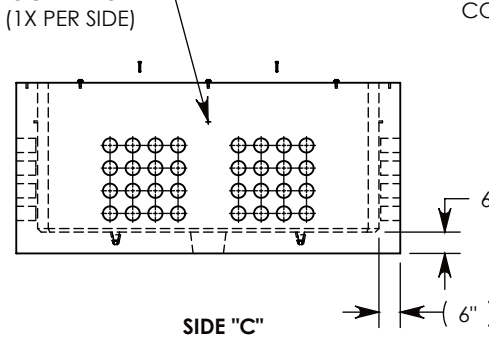
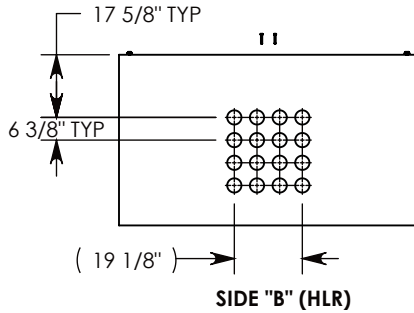
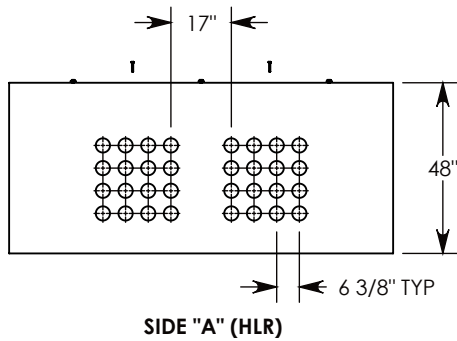
1/2" FENDER WASHER - 1-3/8" OD (6X)
P/N: WSR.5-1.38

BOLT-DOWN STEEL GALV.
FRAME & SPA COVER
~2021 LBS.
P/N: 84-108-SPA

CONCRETE PULL BOX
~11363 LBS
P/N: PB16-84-108-48

CON-DUCT TERMINATIONS ARE CAST INTO
BOX SIDEWALLS. SETS OF 16 ON EACH SIDE.
THEY FIT UP TO 4" PVC PIPE. TO ACCESS
THE HOLES, BREAK THE PLASTIC SEAL

Ø 1/2"-13 UNC INSERT (4X) FOR
PULLING EYES. LOCATED ON
BOX INTERIOR (1X PER SIDE)



NOTE 1: FOR PVC SIZES SMALLER THAN 4", USE CONCAST RC41 (REDUCING COUPLER).

NOTE 2: FOR ADDED SECURITY, PENTA HEAD (P/N: PTA.38-2.5) OR SURELOCK BOLTS (P/N: SL.38-2.5) CAN BE ADDED

AASHTO H-20 RATED - 32,000 LB. SINGLE AXLE LOAD

DRAWN BY: **SAMUEL CALLAHAN**

DATE: **8/21/2020**

REVISION LEVEL: **A**

WEIGHT:

13386 LBS.

MATERIAL:

NOTED



DESCRIPTION:

CONCRETE PULL BOX W/ SPA COVER

DIMENSIONS ARE IN INCHES
TOLERANCES:
FRACTIONAL: ± 1/8"
ANGULAR: ± 2°

CONTACT INFORMATION:
EMAIL: INFO@CONCASTINC.COM
PHONE: (507) 732-4095
FAX: (507) 732-4094

SHEET 1 OF 1

PART NUMBER:

PB16-84-108-48-SPA