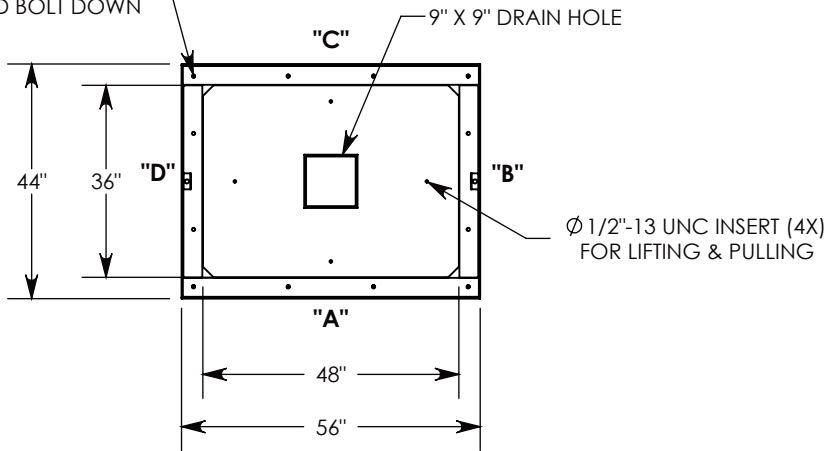


Ø 1/2"-13 UNC INSERTS (4X)
 FOR LIFTING AND BOLT DOWN



3/8-16 UNC X 1.5" LG HEX HD BOLT
 P/N: HHB.38-1.5 (2X)

H-20 HEAVY TRAFFIC RATED
 GALVANIZED STEEL COVER
 ~340 LBS
 P/N: 44-56-RSG

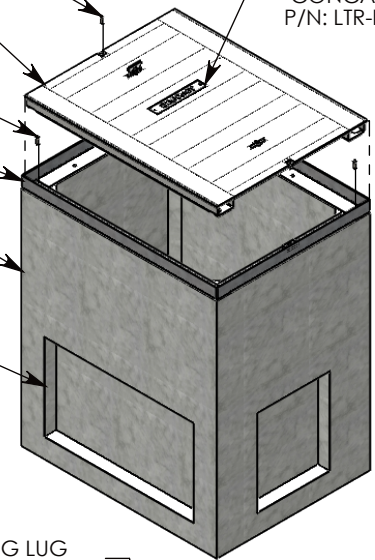
1/2-13 UNC X 1.5" LG HEX HD BOLT
 P/N: HHB.5-1.5 (4X)

BOLT DOWN GALV. STEEL FRAME
 ~92 LBS
 P/N: 44-56-FRM

STEEL REINFORCED
 CONCRETE PULL BOX & FRAME
 P/N: PBK01-44-56-64
 ~3680 LBS

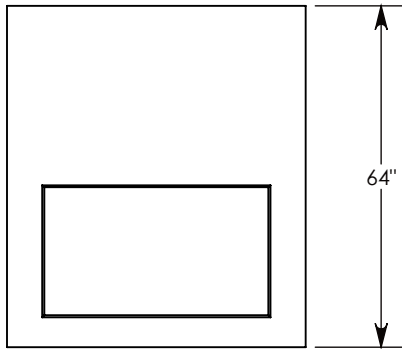
3" DEEP KNOCKOUTS
 CAST INTO ALL 4 SIDES

ALUM ID PLATE
 "CONCAST"
 P/N: LTR-ID

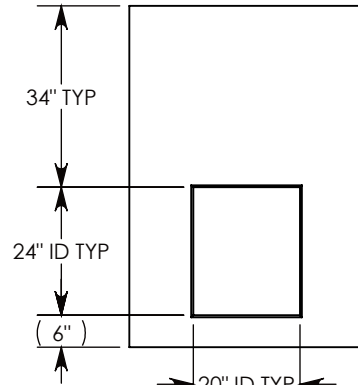


Ø 1/2"-13 UNC INSERT (4X) FOR
 PULLING EYES. LOCATED ON
 BOX INTERIOR (1X PER SIDE)

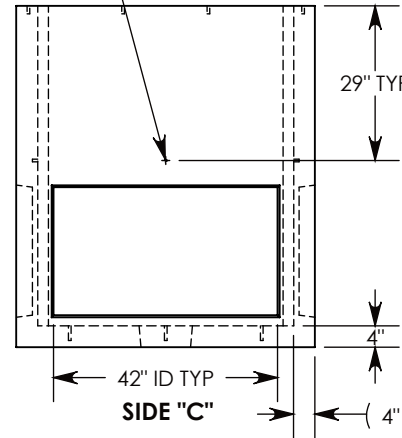
LIFTING LUG
 SHOWN EXTENDED
 COVER SHOWN IN THIS VIEW



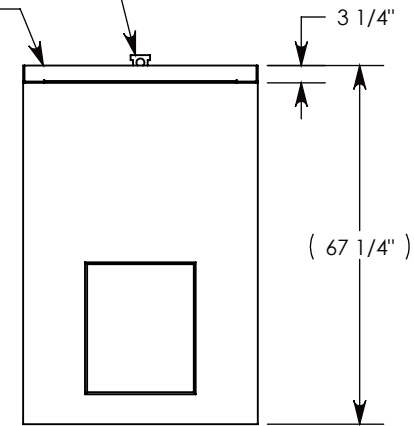
SIDE "A" (HLR)



SIDE "B" (HLR)



SIDE "C"



SIDE "D" (HLR)

NOTE 1: FOR ADDED SECURITY, PENTA HEAD (P/N: PTA38-1.5) OR SURELOCK BOLTS (P/N: SL.38-1.25) CAN BE ADDED

AASHTO H-20 RATED - 32,000 LB. SINGLE AXLE LOAD

DRAWN BY: ROBIN FLINT	
DATE: 3/14/2019	REVISION LEVEL: B
WEIGHT: 4108 LBS. W/COVER	MATERIAL: NOTED

1010 NORTH STAR DRIVE
 P.O. BOX 69
 ZUMBROTA, MN 55992-0069

DESCRIPTION: PULL BOX W/ GALV. STEEL COVER		
DIMENSIONS ARE IN INCHES TOLERANCES: FRACTIONAL: ± 1/8" ANGULAR: ± 2°	CONTACT INFORMATION: EMAIL: INFO@CONCASTINC.COM PHONE: (507) 732-4095 FAX: (507) 732-4094	SHEET 1 OF 1
PART NUMBER: PBK01-44-56-64-RSG		